

Anti-CBX2 antibody ab80044

★★★★★ 2 Abreviews 12 References 3 图像

概述	
产品名称	Anti-CBX2抗体
描述	兔多克隆抗体to CBX2
宿主	Rabbit
特异性	From Jan 2024, QC testing of replenishment batches of this polyclonal changed. All tested and expected application and reactive species combinations are still covered by our Abcam product promise. However, we no longer test all applications. For more information on a specific batch, please contact our Scientific Support who will be happy to help.
经测试应用	适用于: IP, WB
种属反应性	与反应: Mouse, Human
免疫原	Synthetic peptide corresponding to Human CBX2 aa 500 to the C-terminus (C terminal) conjugated to keyhole limpet haemocyanin. (Peptide available as <a href="#">ab91615</a> )
阳性对照	This antibody gave a positive signal in the following lysates: JEG3 whole cell; HUVEC whole cell; HEK293 whole cell; MEL-1 whole cell; MEL-2 whole cell; HeLa nuclear; NIH3T3 whole cell; human testis tissue.
常规说明	<p>The Life Science industry has been in the grips of a reproducibility crisis for a number of years. Abcam is leading the way in addressing this with our range of recombinant monoclonal antibodies and knockout edited cell lines for gold-standard validation. Please check that this product meets your needs before purchasing.</p> <p>If you have any questions, special requirements or concerns, please send us an inquiry and/or contact our Support team ahead of purchase. Recommended alternatives for this product can be found below, along with publications, customer reviews and Q&amp;As</p>
性能	
形式	Liquid
存放说明	Shipped at 4°C. Store at +4°C short term (1-2 weeks). Upon delivery aliquot. Store at -20°C or -80°C. Avoid freeze / thaw cycle.
存储溶液	pH: 7.40 Preservative: 0.02% Sodium azide Constituent: PBS

Batches of this product that have a concentration < 1mg/ml may have BSA added as a stabilising agent. If you would like information about the formulation of a specific lot, please contact our scientific support team who will be happy to help.

纯度	Immunogen affinity purified
克隆	多克隆
同种型	IgG

## 应用

**The Abpromise guarantee**      **Abpromise™**承诺保证使用ab80044于以下的经测试应用

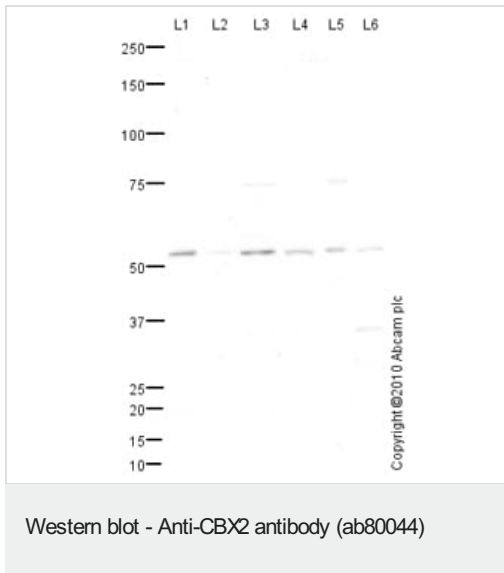
“应用说明”部分 下显示的仅为推荐的起始稀释度;实际最佳的稀释度/浓度应由使用者检定。

应用	Ab评论	说明
IP		Use at an assay dependent concentration.
WB		Use a concentration of 1 µg/ml. Detects a band of approximately 52 kDa (predicted molecular weight: 56 kDa).

## 靶标

功能	Component of the Polycomb group (PcG) multiprotein PRC1 complex, a complex required to maintain the transcriptionally repressive state of many genes, including Hox genes, throughout development. PcG PRC1 complex acts via chromatin remodeling and modification of histones; it mediates monoubiquitination of histone H2A 'Lys-119', rendering chromatin heritably changed in its expressibility. Involved in sexual development, acting as activator of NR5A1 expression.
疾病相关	Defects in CBX2 are the cause of 46,XY sex reversal type 5 (SRXY5) [MIM:613080]. It is a disorder of sex development. Affected individuals have a 46,XY karyotype but present as phenotypically normal females.
序列相似性	Contains 1 A.T hook DNA-binding domain. Contains 1 chromo domain.
细胞定位	Nucleus.

## 图片



**All lanes :** Anti-CBX2 antibody (ab80044) at 1 µg/ml

**Lane 1 :** JEG-3 (Human placental choriocarcinoma cell line) Whole Cell Lysate

**Lane 2 :** HUVEC (Human Umbilical Vein Endothelial Cell) Whole Cell Lysate

**Lane 3 :** HEK293 (Human embryonic kidney cell line) Whole Cell Lysate

**Lane 4 :** MEL-1 (Human embryonic stem cell, male cell line) Whole Cell Lysate ([ab27198](#))

**Lane 5 :** MEL-2 (Human embryonic stem cell, female cell line) Whole Cell Lysate ([ab27196](#))

**Lane 6 :** Human testis tissue lysate - total protein ([ab30257](#))

Lysates/proteins at 10 µg per lane.

### Secondary

**All lanes :** Goat polyclonal to Rabbit IgG - H&L - Pre-Adsorbed (HRP) at 1/3000 dilution

Developed using the ECL technique.

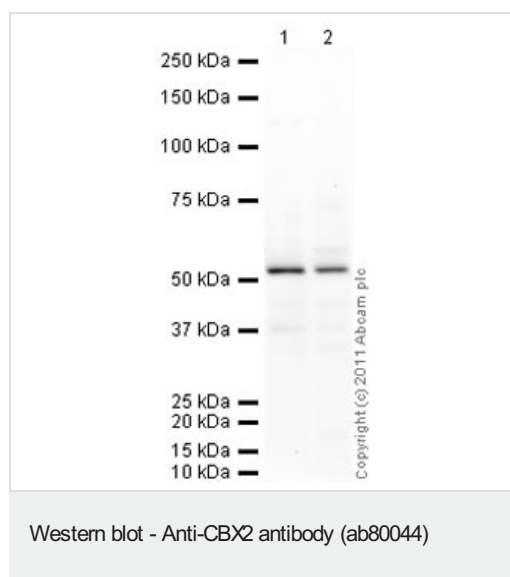
Performed under reducing conditions.

**Predicted band size:** 56 kDa

**Observed band size:** 52 kDa

**Additional bands at:** 36 kDa, 75 kDa. We are unsure as to the identity of these extra bands.

**Exposure time:** 20 minutes



**All lanes** : Anti-CBX2 antibody (ab80044) at 1 µg/ml

**Lane 1** : HeLa (Human epithelial carcinoma cell line) Nuclear Lysate

**Lane 2** : NIH 3T3 (Mouse embryonic fibroblast cell line) Whole Cell Lysate

Lysates/proteins at 10 µg per lane.

### Secondary

**All lanes** : Goat polyclonal Secondary Antibody to Rabbit IgG - H&L (HRP), pre-adsorbed at 1/5000 dilution

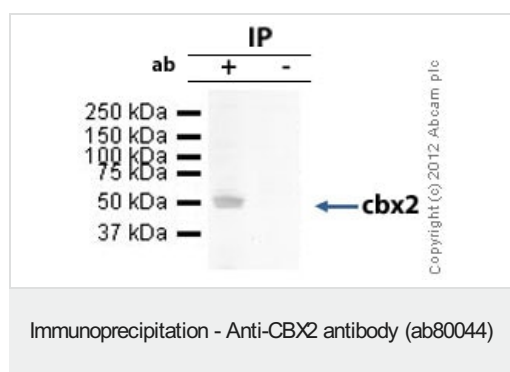
Developed using the ECL technique.

Performed under reducing conditions.

**Predicted band size:** 56 kDa

**Observed band size:** 56 kDa

**Exposure time:** 8 minutes



cbx2 was immunoprecipitated using 0.5mg HeLa whole cell extract, 5µg of Rabbit polyclonal to cbx2 and 50µl of protein G magnetic beads (+). No antibody was added to the control (-).

The antibody was incubated under agitation with Protein G beads for 10min, HeLa whole cell extract lysate diluted in RIPA buffer was added to each sample and incubated for a further 10min under agitation.

Proteins were eluted by addition of 40µl SDS loading buffer and incubated for 10min at 70°C; 10µl of each sample was separated on a SDS PAGE gel, transferred to a nitrocellulose membrane, blocked with 5% BSA and probed with ab80044.

Secondary: Mouse monoclonal [SB62a] Secondary Antibody to Rabbit IgG light chain (HRP) ([ab99697](#)).

Band: 52kDa: cbx2.

**Please note:** All products are "FOR RESEARCH USE ONLY. NOT FOR USE IN DIAGNOSTIC PROCEDURES"

### **Our Abpromise to you: Quality guaranteed and expert technical support**

---

- Replacement or refund for products not performing as stated on the datasheet
- Valid for 12 months from date of delivery
- Response to your inquiry within 24 hours
- We provide support in Chinese, English, French, German, Japanese and Spanish
- Extensive multi-media technical resources to help you
- We investigate all quality concerns to ensure our products perform to the highest standards

If the product does not perform as described on this datasheet, we will offer a refund or replacement. For full details of the Abpromise, please visit <https://www.abcam.cn/abpromise> or contact our technical team.

### **Terms and conditions**

---

- Guarantee only valid for products bought direct from Abcam or one of our authorized distributors