

### Anti-CBS antibody [EPR8579] ab140600

敲除验证
重组
RabMAb

★★★★★
[1 Abreviews](#)
[9 References](#)
[5 图像](#)

#### 概述

产品名称	Anti-CBS抗体[EPR8579]
描述	兔单克隆抗体[EPR8579] to CBS
宿主	Rabbit
经测试应用	<b>适用于:</b> WB, IHC-P, ICC/IF <b>不适用于:</b> Flow Cyt or IP
种属反应性	<b>与反应:</b> Human, Pig
免疫原	Synthetic peptide within Human CBS aa 450-550. The exact sequence is proprietary.
阳性对照	WB: Recombinant Human CBS protein ( <b>ab132564</b> ), human fetal liver tissue lysate, Raji, HeLa, and MCF7 cell lysates. IHC-P: Human pancreas tissue. ICC/IF: MCF7 cells.
常规说明	<p>This product is a recombinant monoclonal antibody, which offers several advantages including:</p> <ul style="list-style-type: none"> <li>- High batch-to-batch consistency and reproducibility</li> <li>- Improved sensitivity and specificity</li> <li>- Long-term security of supply</li> <li>- Animal-free production</li> </ul> <p>For more information <a href="#">see here</a>.</p> <p>Our RabMAb<sup>®</sup> technology is a patented hybridoma-based technology for making rabbit monoclonal antibodies. For details on our patents, please refer to <a href="#">RabMAb<sup>®</sup> patents</a>.</p> <p>Mouse, Rat: We have preliminary internal testing data to indicate this antibody may not react with these species. Please contact us for more information.</p>

#### 性能

形式	Liquid
存放说明	Shipped at 4°C. Upon delivery aliquot and store at -20°C. Avoid freeze / thaw cycles.
存储溶液	pH: 7.2 Preservative: 0.01% Sodium azide Constituents: 9% PBS, 40% Glycerol (glycerin, glycerine), 0.05% BSA, 50% Tissue culture supernatant
纯度	Protein A purified

克隆

单克隆

克隆编号

EPR8579

同种型

IgG

应用

The Abpromise guarantee

Abpromise™承诺保证使用ab140600于以下的经测试应用

“应用说明”部分 下显示的仅为推荐的起始稀释度;实际最佳的稀释度/浓度应由使用者检定。

应用	Ab评论	说明
WB	★★★★★ (1)	1/1000 - 1/10000. Predicted molecular weight: 61 kDa.
IHC-P		1/100 - 1/250. Perform heat mediated antigen retrieval with citrate buffer pH 6 before commencing with IHC staining protocol. Antigen retrieval is recommended.
ICC/IF		1/100 - 1/250.

应用说明

Is unsuitable for Flow Cyt or IP.

靶标

功能

Only known pyridoxal phosphate-dependent enzyme that contains heme. Important regulator of hydrogen sulfide, especially in the brain, utilizing cysteine instead of serine to catalyze the formation of hydrogen sulfide. Hydrogen sulfide is a gastratransmitter with signaling and cytoprotective effects such as acting as a neuromodulator in the brain to protect neurons against hypoxic injury.

组织特异性

In the adult strongly expressed in liver and pancreas, some expression in heart and brain, weak expression in lung and kidney. In the fetus, expressed in brain, liver and kidney.

通路

Amino-acid biosynthesis; L-cysteine biosynthesis; L-cysteine from L-homocysteine and L-serine: step 1/2.

疾病相关

Defects in CBS are the cause of cystathionine beta-synthase deficiency (CBSD) [MIM:236200]. CBSD is an enzymatic deficiency resulting in altered sulfur metabolism and homocystinuria. The clinical features of untreated homocystinuria due to CBS deficiency include myopia, ectopia lentis, mental retardation, skeletal anomalies resembling Marfan syndrome, and thromboembolic events. Light skin and hair can also be present. Biochemical features include increased urinary homocystine and methionine.

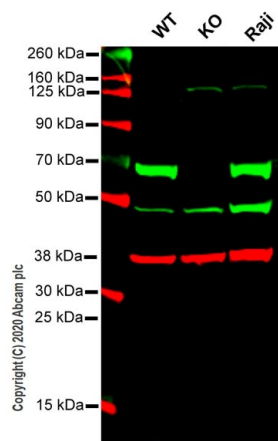
序列相似性

Belongs to the cysteine synthase/cystathionine beta-synthase family.  
Contains 1 CBS domain.

细胞定位

Cytoplasm. Nucleus.

图片



Western blot - Anti-CBS antibody [EPR8579]  
(ab140600)

**All lanes** : Anti-CBS antibody [EPR8579] (ab140600) at 1/1000 dilution

**Lane 1** : Wild-type HeLa cell lysate

**Lane 2** : CBS knockout HeLa cell lysate

**Lane 3** : Raji cell lysate

Lysates/proteins at 20 µg per lane.

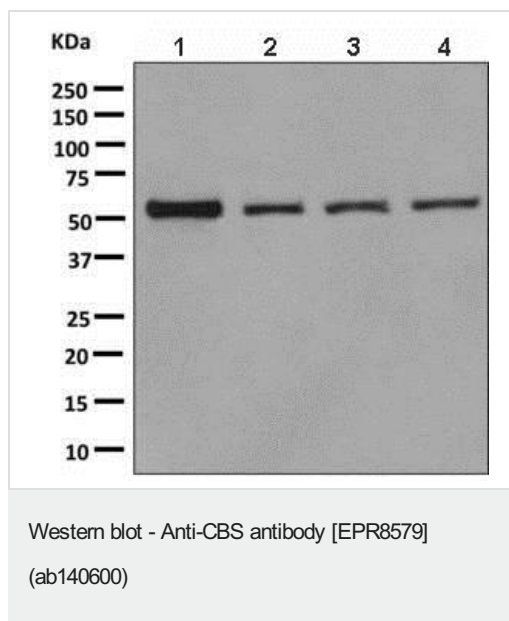
Performed under reducing conditions.

**Predicted band size:** 61 kDa

**Observed band size:** 70 kDa

**Lanes 1-3:** Merged signal (red and green). Green - ab140600 observed at 70 kDa. Red - loading control, **ab8245** observed at 37 kDa.

ab140600 Anti-CBS antibody [EPR8579] was shown to specifically react with CBS in wild-type HeLa cells. Loss of signal was observed when knockout cell line **ab264950** (knockout cell lysate **ab257203**) was used. Wild-type and CBS knockout samples were subjected to SDS-PAGE. ab140600 and Anti-GAPDH antibody [6C5] - Loading Control (**ab8245**) were incubated overnight at 4°C at 1 in 1000 dilution and 1 in 20000 dilution respectively. Blots were developed with Goat anti-Rabbit IgG H&L (IRDye® 800CW) preadsorbed (**ab216773**) and Goat anti-Mouse IgG H&L (IRDye® 680RD) preadsorbed (**ab216776**) secondary antibodies at 1 in 10000 dilution for 1 hour at room temperature before imaging.



**All lanes :** Anti-CBS antibody [EPR8579] (ab140600) at 1/1000 dilution

**Lane 1 :** Human fetal liver cell lysate

**Lane 2 :** Raji cell lysate

**Lane 3 :** HeLa cell lysate

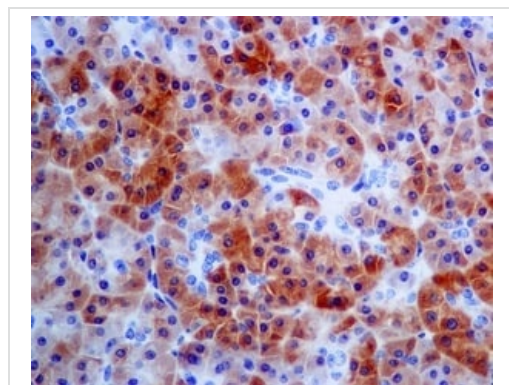
**Lane 4 :** MCF7 cell lysate

Lysates/proteins at 10 µg per lane.

#### Secondary

**All lanes :** HRP labelled goat anti-rabbit at 1/2000 dilution

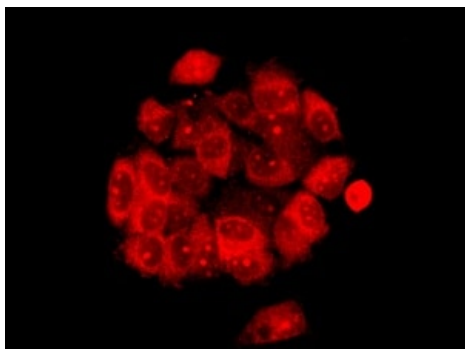
**Predicted band size:** 61 kDa



Immunohistochemistry (Formalin/PFA-fixed paraffin-embedded sections) - Anti-CBS antibody [EPR8579] (ab140600)

Immunohistochemical analysis of paraffin embedded Human pancreas tissue labelling CBS with ab140600 antibody at a dilution of 1/100.

Perform heat mediated antigen retrieval with citrate buffer pH 6 before commencing with IHC staining protocol.



Immunofluorescent analysis of MCF7 cells labelling CBS with ab140600 at 1/100 dilution.

Immunocytochemistry/ Immunofluorescence - Anti-CBS antibody [EPR8579] (ab140600)

#### Why choose a recombinant antibody?



**Research with confidence**  
Consistent and reproducible results



**Long-term and scalable supply**  
Recombinant technology



**Success from the first experiment**  
Confirmed specificity



**Ethical standards compliant**  
Animal-free production

Anti-CBS antibody [EPR8579] (ab140600)

**Please note:** All products are "FOR RESEARCH USE ONLY. NOT FOR USE IN DIAGNOSTIC PROCEDURES"

#### Our Abpromise to you: Quality guaranteed and expert technical support

- Replacement or refund for products not performing as stated on the datasheet
- Valid for 12 months from date of delivery
- Response to your inquiry within 24 hours
- We provide support in Chinese, English, French, German, Japanese and Spanish
- Extensive multi-media technical resources to help you
- We investigate all quality concerns to ensure our products perform to the highest standards

If the product does not perform as described on this datasheet, we will offer a refund or replacement. For full details of the Abpromise, please visit <https://www.abcam.cn/abpromise> or contact our technical team.

## Terms and conditions

---

- Guarantee only valid for products bought direct from Abcam or one of our authorized distributors