

Anti-CBS antibody ab96252

[10 References](#) [5 图像](#)

概述

产品名称	Anti-CBS抗体
描述	兔多克隆抗体to CBS
宿主	Rabbit
经测试应用	适用于: ICC/IF, WB, IHC-P
种属反应性	与反应: Human, Pig, Zebrafish 预测可用于: Mouse, Rat, Rabbit, Cow 
免疫原	Recombinant fragment corresponding to a region within amino acids 39-221 of Human CBS (AAH00440).
阳性对照	WB: HeLa, Molt-4 and Raji whole cell lysates IHC-P: OVCAR3 xenograft; ICC: HeLa cells.
常规说明	<p>The Life Science industry has been in the grips of a reproducibility crisis for a number of years. Abcam is leading the way in addressing this with our range of recombinant monoclonal antibodies and knockout edited cell lines for gold-standard validation. Please check that this product meets your needs before purchasing.</p> <p>If you have any questions, special requirements or concerns, please send us an inquiry and/or contact our Support team ahead of purchase. Recommended alternatives for this product can be found below, along with publications, customer reviews and Q&As</p>

性能

形式	Liquid
存放说明	Shipped at 4°C. Upon delivery aliquot and store at -20°C or -80°C. Avoid repeated freeze / thaw cycles.
存储溶液	pH: 7.00 Preservative: 0.025% Proclin 300 Constituents: 79% PBS, 20% Glycerol (glycerin, glycerine)
纯度	Immunogen affinity purified
克隆	多克隆
同种型	IgG

应用

The Abpromise guarantee

Abpromise™承诺保证使用ab96252于以下的经测试应用

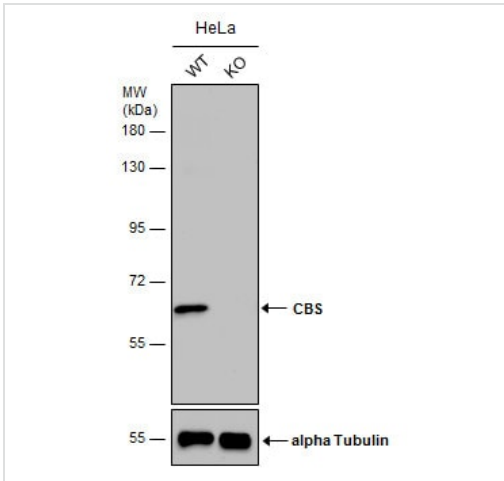
“应用说明”部分下显示的仅为推荐的起始稀释度;实际最佳的稀释度/浓度应由使用者检定。

应用	Ab评论	说明
ICC/IF		Use a concentration of 5 µg/ml.
WB		1/500 - 1/3000. Predicted molecular weight: 61 kDa.
IHC-P		1/100 - 1/1000.

靶标

功能	Only known pyridoxal phosphate-dependent enzyme that contains heme. Important regulator of hydrogen sulfide, especially in the brain, utilizing cysteine instead of serine to catalyze the formation of hydrogen sulfide. Hydrogen sulfide is a gastratransmitter with signaling and cytoprotective effects such as acting as a neuromodulator in the brain to protect neurons against hypoxic injury.
组织特异性	In the adult strongly expressed in liver and pancreas, some expression in heart and brain, weak expression in lung and kidney. In the fetus, expressed in brain, liver and kidney.
通路	Amino-acid biosynthesis; L-cysteine biosynthesis; L-cysteine from L-homocysteine and L-serine: step 1/2.
疾病相关	Defects in CBS are the cause of cystathionine beta-synthase deficiency (CBSD) [MIM:236200]. CBSD is an enzymatic deficiency resulting in altered sulfur metabolism and homocystinuria. The clinical features of untreated homocystinuria due to CBS deficiency include myopia, ectopia lentis, mental retardation, skeletal anomalies resembling Marfan syndrome, and thromboembolic events. Light skin and hair can also be present. Biochemical features include increased urinary homocystine and methionine.
序列相似性	Belongs to the cysteine synthase/cystathionine beta-synthase family. Contains 1 CBS domain.
细胞定位	Cytoplasm. Nucleus.

图片



Western blot - Anti-CBS antibody (ab96252)

All lanes : Anti-CBS antibody (ab96252) at 1/5000 dilution

Lane 1 : WT HeLa cell extract

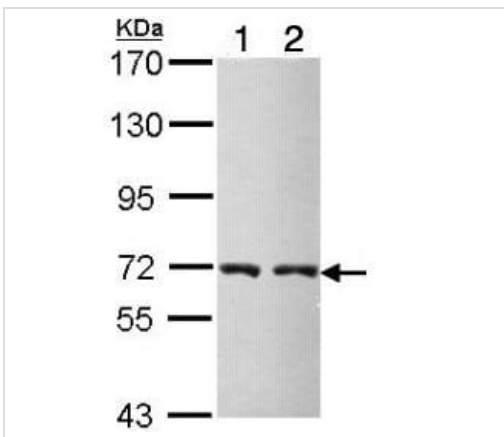
Lane 2 : CBS Knockout HeLa cell extracts

Lysates/proteins at 30 µg per lane.

Secondary

All lanes : HRP-conjugated anti-rabbit IgG

Predicted band size: 61 kDa



Western blot - Anti-CBS antibody (ab96252)

All lanes : Anti-CBS antibody (ab96252) at 1/5000 dilution

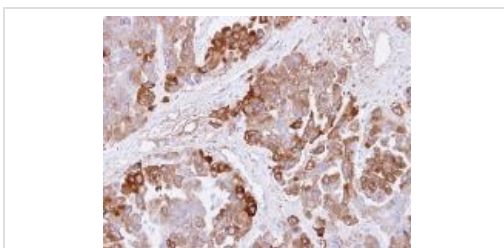
Lane 1 : Molt-4 whole cell lysate

Lane 2 : Raji whole cell lysate

Lysates/proteins at 30 µg per lane.

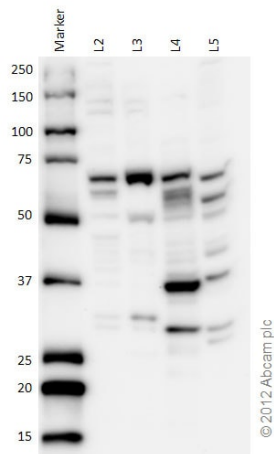
Predicted band size: 61 kDa

7.5% SDS PAGE



Immunohistochemistry (Formalin/PFA-fixed paraffin-embedded sections) - Anti-CBS antibody (ab96252)

Immunohistochemical analysis of paraffin-embedded OVCAR3 xenograft using ab96252 at 1/500 dilution.



Western blot - Anti-CBS antibody (ab96252)

All lanes : Anti-CBS antibody (ab96252) at 1 µg/ml

Lane 1 : Marker

Lane 2 : Zebrafish brain homogenate at 20 µg

Lane 3 : Zebrafish heart homogenate at 20 µg

Lane 4 : Zebrafish liver homogenate at 20 µg

Lane 5 : Human epithelial carcinoma cell line at 20 µg

Secondary

All lanes : Goat polyclonal to Rabbit IgG – H&L – Pre-Adsorbed (HRP) at 1/6000 dilution

Developed using the ECL technique.

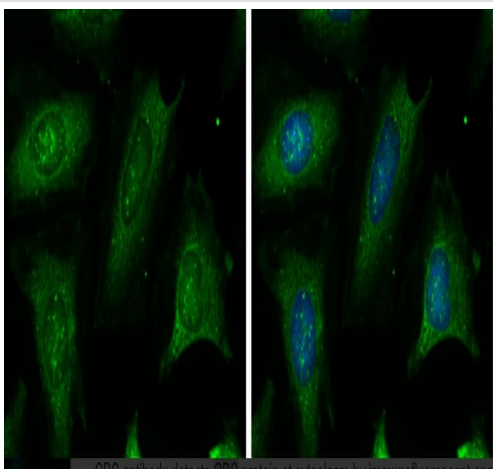
Performed under reducing conditions.

Predicted band size: 61 kDa

Observed band size: 72 kDa

Exposure time: 3 minutes

HeLa cells stained for CBS (green) using ab96252 at 1/200 dilution in ICC/IF.



Immunocytochemistry/ Immunofluorescence - Anti-CBS antibody (ab96252)

Please note: All products are "FOR RESEARCH USE ONLY. NOT FOR USE IN DIAGNOSTIC PROCEDURES"

Our Abpromise to you: Quality guaranteed and expert technical support

- Replacement or refund for products not performing as stated on the datasheet
- Valid for 12 months from date of delivery
- Response to your inquiry within 24 hours

- We provide support in Chinese, English, French, German, Japanese and Spanish
- Extensive multi-media technical resources to help you
- We investigate all quality concerns to ensure our products perform to the highest standards

If the product does not perform as described on this datasheet, we will offer a refund or replacement. For full details of the Abpromise, please visit <https://www.abcam.cn/abpromise> or contact our technical team.

Terms and conditions

- Guarantee only valid for products bought direct from Abcam or one of our authorized distributors