

Anti-CBLB antibody [246C5a] ab54362



★★★★★ 1 Abreviews 2 References 3 图像

概述

产品名称	Anti-CBLB抗体[246C5a]
描述	小鼠单克隆抗体[246C5a] to CBLB
宿主	Mouse
经测试应用	适用于: IHC-P, WB
种属反应性	与反应: Mouse, Human
免疫原	Recombinant C terminal fragment of Human CBLB.
阳性对照	WB: CTLL-2, HeLa and MCF7 cell lysates
常规说明	<p>The Life Science industry has been in the grips of a reproducibility crisis for a number of years. Abcam is leading the way in addressing this with our range of recombinant monoclonal antibodies and knockout edited cell lines for gold-standard validation. Please check that this product meets your needs before purchasing.</p> <p>If you have any questions, special requirements or concerns, please send us an inquiry and/or contact our Support team ahead of purchase. Recommended alternatives for this product can be found below, along with publications, customer reviews and Q&amp;As</p>

性能

形式	Liquid
存放说明	Shipped at 4°C. Store at +4°C short term (1-2 weeks). Upon delivery aliquot. Store at -20°C long term.
存储溶液	pH: 7.40 Preservative: 0.05% Sodium azide Constituents: 1% BSA, PBS
纯度	Protein G purified
纯化说明	ab54362 was purified using protein G column chromatography from culture supernatant of hybridoma cultured in a medium containing bovine IgG depleted (approximately 95%) fetal bovine serum and filtered through a 0.22µm membrane.
克隆	单克隆
克隆编号	246C5a

应用

The Abpromise guarantee

Abpromise™承诺保证使用ab54362于以下的经测试应用

“应用说明”部分 下显示的仅为推荐的起始稀释度;实际最佳的稀释度/浓度应由使用者检定。

应用	Ab评论	说明
IHC-P		Use a concentration of 5 µg/ml. Perform heat mediated antigen retrieval before commencing with IHC staining protocol.
WB	★★★★★ (1)	Use at an assay dependent concentration. Predicted molecular weight: 109 kDa.

靶标

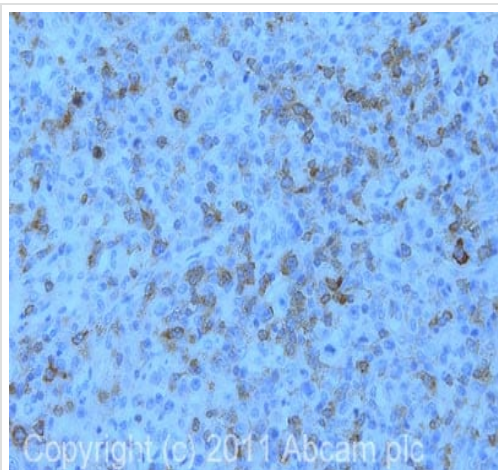
相关性

Function: E3 ubiquitin-protein ligase which accepts ubiquitin from specific E2 ubiquitin-conjugating enzymes, and transfers it to substrates, generally promoting their degradation by the proteasome. Negatively regulates TCR (T-cell receptor), BCR (B-cell receptor) and FCER1 (high affinity immunoglobulin epsilon receptor) signal transduction pathways. In naive T-cells, inhibits VAV1 activation upon TCR engagement and imposes a requirement for CD28 costimulation for proliferation and IL-2 production. Also acts by promoting PIK3R1/p85 ubiquitination, which impairs its recruitment to the TCR and subsequent activation. In activated T-cells, inhibits PLCG1 activation and calcium mobilization upon restimulation and promotes anergy. In B-cells, acts by ubiquitinating SYK and promoting its proteasomal degradation. Slightly promotes SRC ubiquitination. May be involved in EGFR ubiquitination and internalization. May be functionally coupled with the E2 ubiquitin-protein ligase UB2D3. Tissue specificity: Expressed in placenta, heart, lung, kidney, spleen, ovary and testis, as well as fetal brain and liver and hematopoietic cell lines, but not in adult brain, liver, pancreas, salivary gland, or skeletal muscle. Present in lymphocytes (at protein level). Pathway: Protein modification; protein ubiquitination. Similarity: Contains 1 Cbl-PTB (Cbl-type phosphotyrosine-binding) domain. Contains 1 RING-type zinc finger. Contains 1 UBA domain. Domain: The N-terminus is composed of the phosphotyrosine binding (PTB) domain, a short linker region and the RING-type zinc finger. The PTB domain, which is also called TKB (tyrosine kinase binding) domain, is composed of three different subdomains: a four-helix bundle (4H), a calcium-binding EF hand and a divergent SH2 domain. The RING-type zinc finger domain mediates binding to an E2 ubiquitin-conjugating enzyme. The UBA domain interacts with poly-ubiquitinated proteins. PTM: Phosphorylated on tyrosine and serine residues upon TCR or BCR activation, and upon various types of cell stimulation. Auto-ubiquitinated upon EGF-mediated cell activation or upon T-cell costimulation by CD28; which promotes proteasomal degradation.

细胞定位

Cytoplasmic and Nuclear

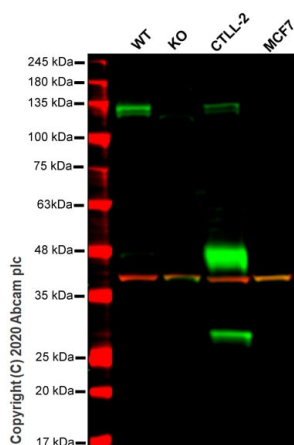
图片



Immunohistochemistry (Formalin/PFA-fixed paraffin-embedded sections) - Anti-CBLB antibody [246C5a] (ab54362)

IHC image of ab54362 staining in human T-cell lymphoma formalin fixed paraffin embedded tissue section, performed on a Leica Bond™ system using the standard protocol F. The section was pre-treated using heat mediated antigen retrieval with sodium citrate buffer (pH6, epitope retrieval solution 1) for 20 mins. The section was then incubated with ab54362, 5µg/ml, for 15 mins at room temperature and detected using an HRP conjugated compact polymer system. DAB was used as the chromogen. The section was then counterstained with haematoxylin and mounted with DPX.

For other IHC staining systems (automated and non-automated) customers should optimize variable parameters such as antigen retrieval conditions, primary antibody concentration and antibody incubation times.



Western blot - Anti-CBLB antibody [246C5a] (ab54362)

**All lanes :** Anti-CBLB antibody [246C5a] (ab54362) at 1/500 dilution

**Lane 1 :** Wild-type HeLa cell lysate

**Lane 2 :** CBLB knockout HeLa cell lysate

**Lane 3 :** CTLL-2 cell lysate

**Lane 4 :** MCF7 cell lysate

Lysates/proteins at 20 µg per lane.

Performed under reducing conditions.

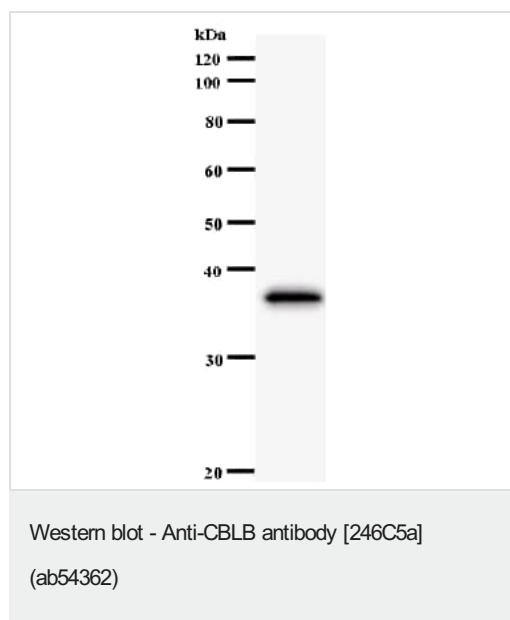
**Predicted band size:** 109 kDa

**Observed band size:** 130 kDa

**Lanes 1-4:** Merged signal (red and green). Green - ab54362 observed at 130 kDa. Red - loading control, **ab181602** observed at 37 kDa.

ab54362 Anti-CBLB antibody [246C5a] was shown to specifically react with CBLB in wild-type HeLa cells. Loss of signal was observed when knockout cell line **ab264711** (knockout cell lysate **ab258342**) was used. Wild-type and CBLB knockout samples were subjected to SDS-PAGE. ab54362 and Anti-GAPDH antibody [EPR16891] - Loading Control (**ab181602**) were incubated

overnight at 4°C at 1 in 500 dilution and 1 in 20000 dilution respectively. Blots were developed with Goat anti-Mouse IgG H&L (IRDye® 800CW) preadsorbed (**ab216772**) and Goat anti-Rabbit IgG H&L (IRDye® 680RD) preadsorbed (**ab216777**) secondary antibodies at 1 in 10000 dilution for 1 hour at room temperature before imaging.



Anti-CBLB antibody [246C5a] (ab54362) + immunizing recombinant protein

**Predicted band size:** 109 kDa

**Observed band size:** 37 kDa

The molecular weight of the band on the Western blot does not correspond to the molecular weight of the natural protein as the immunizing recombinant protein fragment was used as the test antigen.

**Please note:** All products are "FOR RESEARCH USE ONLY. NOT FOR USE IN DIAGNOSTIC PROCEDURES"

### Our Abpromise to you: Quality guaranteed and expert technical support

- Replacement or refund for products not performing as stated on the datasheet
- Valid for 12 months from date of delivery
- Response to your inquiry within 24 hours
- We provide support in Chinese, English, French, German, Japanese and Spanish
- Extensive multi-media technical resources to help you
- We investigate all quality concerns to ensure our products perform to the highest standards

If the product does not perform as described on this datasheet, we will offer a refund or replacement. For full details of the Abpromise, please visit <https://www.abcam.cn/abpromise> or contact our technical team.

### Terms and conditions

- Guarantee only valid for products bought direct from Abcam or one of our authorized distributors