

Anti-CBFb antibody [EPR6321] ab124693

敲除验证
重组
RabMAb

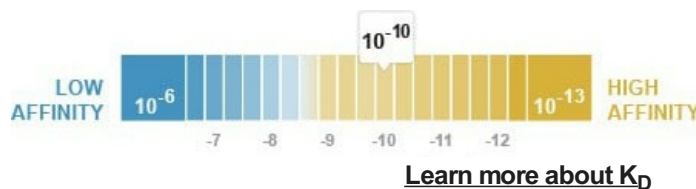
[1 References](#)
[4 图像](#)

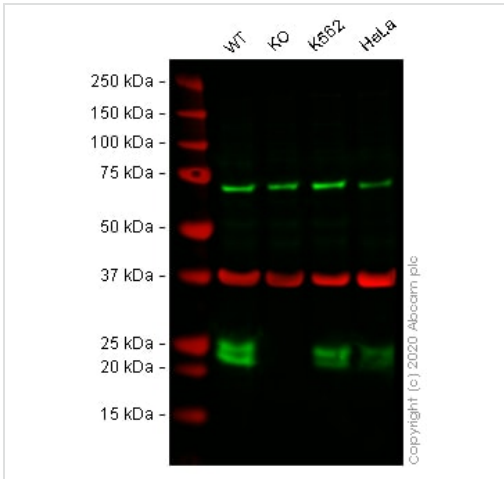
概述

产品名称	Anti-CBFb抗体[EPR6321]
描述	兔单克隆抗体[EPR6321] to CBFb
宿主	Rabbit
经测试应用	适用于: WB 不适用于: Flow Cyt, IHC-P or IP
种属反应性	与反应: Human
免疫原	Synthetic peptide within Human CBFb aa 1-100. The exact sequence is proprietary.
阳性对照	WB: A431, HeLa, K562, Jurkat and HUVEC cell lysates.
常规说明	<p>This product is a recombinant monoclonal antibody, which offers several advantages including:</p> <ul style="list-style-type: none"> - High batch-to-batch consistency and reproducibility - Improved sensitivity and specificity - Long-term security of supply - Animal-free production <p>For more information see here.</p> <p>Our RabMAb[®] technology is a patented hybridoma-based technology for making rabbit monoclonal antibodies. For details on our patents, please refer to RabMAb[®] patents.</p> <p>Mouse, Rat: We have preliminary internal testing data to indicate this antibody may not react with these species. Please contact us for more information.</p>

性能

形式	Liquid
存放说明	Shipped at 4°C. Store at -20°C. Stable for 12 months at -20°C.
解离常数 (K_D)	K _D = 1.97 x 10 ⁻¹⁰ M





Western blot - Anti-CBFb antibody [EPR6321] (ab124693)

All lanes : Anti-CBFb antibody [EPR6321] (ab124693) at 1/1000 dilution

Lane 1 : Wild-type A431 cell lysate

Lane 2 : CBFb knockout A431 cell lysate

Lane 3 : K562 cell lysate

Lane 4 : HeLa cell lysate

Lysates/proteins at 20 µg per lane.

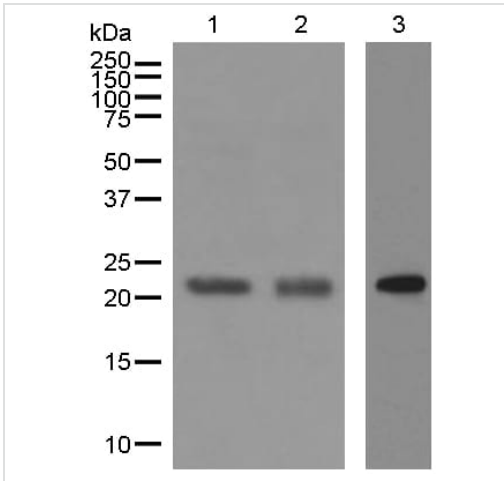
Performed under reducing conditions.

Predicted band size: 22 kDa

Observed band size: 24-25 kDa

Lanes 1 - 4: Merged signal (red and green). Green - ab124693 observed at 24-25 kDa. Red - loading control, **ab7291** (Mouse anti-Alpha Tubulin [DM1A]) observed at 55kDa.

ab124693 was shown to react with CBFb in wild-type A431 cells in western blot. Loss of signal was observed when CBFb knockout sample was used. Wild-type and CBFb knockout cell lysates were subjected to SDS-PAGE. Membranes were blocked in 3% milk in TBS-T (0.1% Tween®) before incubation with ab124693 and **ab7291** (Mouse anti-Alpha Tubulin [DM1A]) overnight at 4°C at a 1 in 1000 Dilution and a 1 in 20000 dilution respectively. Blots were incubated with Goat anti-Rabbit IgG H&L (IRDye® 800CW) preabsorbed (**ab216773**) and Goat anti-Mouse IgG H&L (IRDye® 680RD) preabsorbed (**ab216776**) secondary antibodies at 1 in 20000 dilution for 1 hour at room temperature before imaging.



Western blot - Anti-CBFb antibody [EPR6321] (ab124693)

All lanes : Anti-CBFb antibody [EPR6321] (ab124693) at 1/1000 dilution

Lane 1 : K562 cell lysate

Lane 2 : Jurkat cell lysate

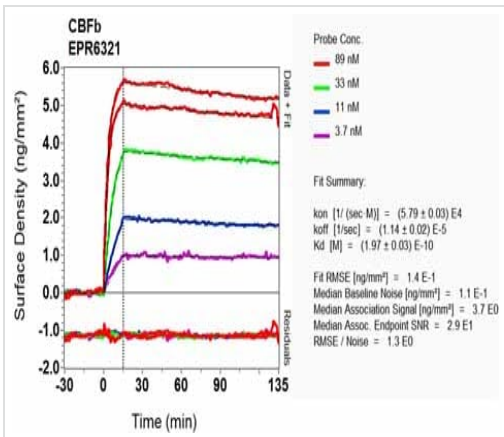
Lane 3 : HUVEC cell lysate

Lysates/proteins at 10 µg per lane.

Secondary

All lanes : Goat anti-Rabbit HRP at 1/2000 dilution

Predicted band size: 22 kDa



SPR Scanning - Anti-CBFb antibody [EPR6321] (ab124693)

Equilibrium dissociation constant (K_D)

Learn more about K_D

[Click here to learn more about \$K_D\$](#)

Why choose a recombinant antibody?

Research with confidence
Consistent and reproducible results

Long-term and scalable supply
Recombinant technology

Success from the first experiment
Confirmed specificity

Ethical standards compliant
Animal-free production

Anti-CBFb antibody [EPR6321] (ab124693)

Please note: All products are "FOR RESEARCH USE ONLY. NOT FOR USE IN DIAGNOSTIC PROCEDURES"

Our Abpromise to you: Quality guaranteed and expert technical support

- Replacement or refund for products not performing as stated on the datasheet
- Valid for 12 months from date of delivery
- Response to your inquiry within 24 hours

- We provide support in Chinese, English, French, German, Japanese and Spanish
- Extensive multi-media technical resources to help you
- We investigate all quality concerns to ensure our products perform to the highest standards

If the product does not perform as described on this datasheet, we will offer a refund or replacement. For full details of the Abpromise, please visit <https://www.abcam.cn/abpromise> or contact our technical team.

Terms and conditions

- Guarantee only valid for products bought direct from Abcam or one of our authorized distributors