

Anti-CBFb antibody ab125191

5 References **2 图像**

概述

产品名称	Anti-CBFb抗体
描述	兔多克隆抗体to CBFb
宿主	Rabbit
经测试应用	适用于: WB, IP
种属反应性	与反应: Mouse, Human
免疫原	Synthetic peptide, corresponding to a region within amino acids 166-187 of Human CBFb (NP_074036.1).
阳性对照	WB: HeLa, HEK-293T, TCMK, NIH/3T3 and Jurkat whole cell lysate. IP: Jurkat whole cell lysate.
常规说明	<p>The Life Science industry has been in the grips of a reproducibility crisis for a number of years. Abcam is leading the way in addressing this with our range of recombinant monoclonal antibodies and knockout edited cell lines for gold-standard validation. Please check that this product meets your needs before purchasing.</p> <p>If you have any questions, special requirements or concerns, please send us an inquiry and/or contact our Support team ahead of purchase. Recommended alternatives for this product can be found below, along with publications, customer reviews and Q&As</p>

性能

形式	Liquid
存放说明	Shipped at 4°C. Upon delivery aliquot and store at -20°C. Avoid freeze / thaw cycles.
存储溶液	<p>pH: 7</p> <p>Preservative: 0.09% Sodium azide</p> <p>Constituent: 99% Tris citrate/phosphate</p>
纯度	pH 7 to 8
克隆	Immunogen affinity purified
同种型	多克隆
	IgG

应用

The Abpromise guarantee

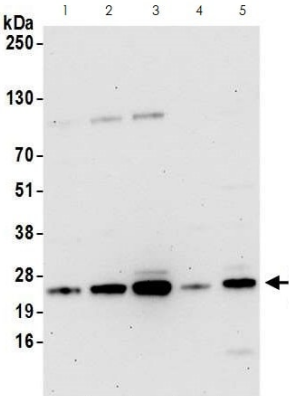
Abpromise™承诺保证使用ab125191于以下的经测试应用

“应用说明”部分 下显示的仅为推荐的起始稀释度;实际最佳的稀释度/浓度应由使用者检定。

应用	Ab评论	说明
WB		1/2000 - 1/10000. Predicted molecular weight: 22 kDa.
IP		Use at 2-10 µg/mg of lysate.

靶标	
功能	CBF binds to the core site, 5'-PYGPYGGT-3', of a number of enhancers and promoters, including murine leukemia virus, polyomavirus enhancer, T-cell receptor enhancers, LCK, IL3 and GM-CSF promoters. CBFβ enhances DNA binding by RUNX1.
疾病相关	Note=A chromosomal aberration involving CBFβ is associated with acute myeloid leukemia of M4EO subtype. Pericentric inversion inv(16)(p13;q22). The inversion produces a fusion protein that consists of the 165 N-terminal residues of CBF-beta (PEPB2) with the tail region of MYH11.
序列相似性	Belongs to the CBF-beta family.
细胞定位	Nucleus.

图片



All lanes : Anti-CBFβ antibody (ab125191) at 0.1 µg/ml

Lane 1 : HeLa (Human epithelial cell line from cervix adenocarcinoma) whole cell lysate

Lane 2 : HEK-293T (Human epithelial cell line from embryonic kidney transformed with large T antigen) whole cell lysate

Lane 3 : Jurkat (Human T cell leukemia cell line from peripheral blood) whole cell lysate

Lane 4 : TCMK (Mouse kidney epithelial cell line) whole cell lysate

Lane 5 : NIH/3T3 (Mouse embryo fibroblast cell line) whole cell lysate

Lysates/proteins at 15 µg per lane.

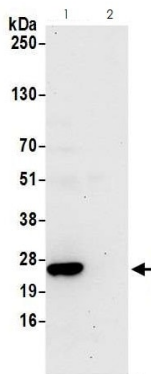
Predicted band size: 22 kDa

Exposure time: 30 seconds

Cells prepared using NETN lysis buffer.

4-12% SDS-PAGE.

Western blot - Anti-CBFβ antibody (ab125191)



Immunoprecipitation - Anti-CBFb antibody
(ab125191)

Detection of human CBFb by western blot of immunoprecipitates.

Lane 1: Sample.

Lane 2: Control IgG.

Samples: Whole cell lysate (1.0 mg per IP reaction; 20% of IP loaded) from Jurkat (Human T cell leukemia cell line from peripheral blood) cells prepared using NETN lysis buffer.

Antibodies: ab125191 used for IP at 3 µg per reaction. For blotting immunoprecipitated CBFb ab125191 was used at 1 µg/ml.

Detection: Chemiluminescence with an exposure time of 30 seconds.

Please note: All products are "FOR RESEARCH USE ONLY. NOT FOR USE IN DIAGNOSTIC PROCEDURES"

Our Abpromise to you: Quality guaranteed and expert technical support

- Replacement or refund for products not performing as stated on the datasheet
- Valid for 12 months from date of delivery
- Response to your inquiry within 24 hours
- We provide support in Chinese, English, French, German, Japanese and Spanish
- Extensive multi-media technical resources to help you
- We investigate all quality concerns to ensure our products perform to the highest standards

If the product does not perform as described on this datasheet, we will offer a refund or replacement. For full details of the Abpromise, please visit <https://www.abcam.cn/abpromise> or contact our technical team.

Terms and conditions

- Guarantee only valid for products bought direct from Abcam or one of our authorized distributors