

Anti-Cathepsin V antibody ab124656

[2 References](#) [2 图像](#)

概述

产品名称	Anti-Cathepsin V抗体
描述	兔多克隆抗体to Cathepsin V
宿主	Rabbit
特异性	ab124656 detects endogenous levels of fragment of activated CATL2 resulting from cleavage adjacent to Leu114.
经测试应用	适用于: WB, IHC-P
种属反应性	与反应: Human, African green monkey
免疫原	A synthetic peptide, corresponding to internal sequence amino acids of Human Cathepsin V.
阳性对照	Human breast tissue; 293 and COS cell extracts, treated with etoposide 25uM 1h.
常规说明	<p>The Life Science industry has been in the grips of a reproducibility crisis for a number of years. Abcam is leading the way in addressing this with our range of recombinant monoclonal antibodies and knockout edited cell lines for gold-standard validation. Please check that this product meets your needs before purchasing.</p> <p>If you have any questions, special requirements or concerns, please send us an inquiry and/or contact our Support team ahead of purchase. Recommended alternatives for this product can be found below, along with publications, customer reviews and Q&As</p>

性能

形式	Liquid
存放说明	Shipped at 4°C. Store at -20°C. Stable for 12 months at -20°C.
存储溶液	pH: 7.40 Preservative: 0.02% Sodium azide Constituents: 49% PBS, 0.88% Sodium chloride, 50% Glycerol (glycerin, glycerine)
纯度	PBS (without Mg ²⁺ , Ca ²⁺) Immunogen affinity purified
克隆	多克隆
同种型	IgG

应用

The Abpromise guarantee

Abpromise™ 承诺保证使用 ab124656 于以下的经测试应用

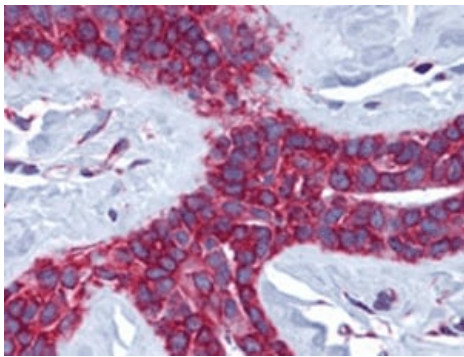
“应用说明”部分下显示的仅为推荐的起始稀释度；实际最佳的稀释度/浓度应由使用者检定。

应用	Ab评论	说明
WB		1/500 - 1/1000. Predicted molecular weight: 37 kDa.
IHC-P		Use a concentration of 5 µg/ml. Perform heat mediated antigen retrieval with citrate buffer pH 6 before commencing with IHC staining protocol.

靶标

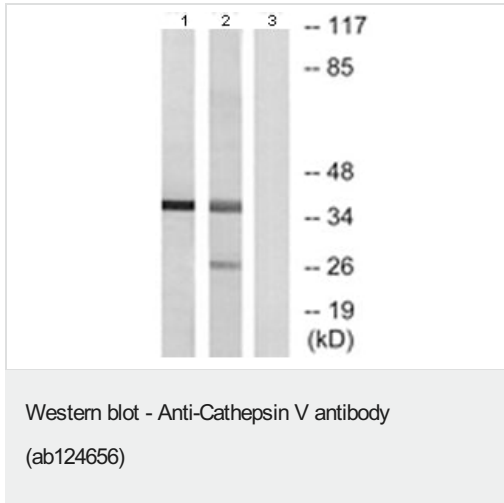
功能	Cysteine protease. May have an important role in corneal physiology.
组织特异性	Predominantly expressed in the thymus and testis. Also expressed in corneal epithelium, and to a lesser extent in conjunctival epithelium and skin.
序列相似性	Belongs to the peptidase C1 family.
细胞定位	Lysosome.

图片



ab124656, at 1/500 dilution, staining Cathepsin V in Formalin-Fixed, Paraffin-Embedded Human breast tissue by Immunohistochemistry.

Immunohistochemistry (Formalin/PFA-fixed paraffin-embedded sections) - Anti-Cathepsin V antibody (ab124656)



All lanes : Anti-Cathepsin V antibody (ab124656) at 1/500 dilution

Lane 1 : 293 cell extracts, treated with etoposide 25uM 1h

Lane 2 : COS cell extracts, treated with etoposide 25uM 1h

Lane 3 : 293 cell extracts, treated with etoposide 25uM 1h with synthesized peptide

Predicted band size: 37 kDa

Please note: All products are "FOR RESEARCH USE ONLY. NOT FOR USE IN DIAGNOSTIC PROCEDURES"

Our Abpromise to you: Quality guaranteed and expert technical support

- Replacement or refund for products not performing as stated on the datasheet
- Valid for 12 months from date of delivery
- Response to your inquiry within 24 hours
- We provide support in Chinese, English, French, German, Japanese and Spanish
- Extensive multi-media technical resources to help you
- We investigate all quality concerns to ensure our products perform to the highest standards

If the product does not perform as described on this datasheet, we will offer a refund or replacement. For full details of the Abpromise, please visit <https://www.abcam.cn/abpromise> or contact our technical team.

Terms and conditions

- Guarantee only valid for products bought direct from Abcam or one of our authorized distributors