


Anti-Cathepsin K antibody ab85716

[1 References](#) [1 图像](#)

概述

| | |
|-------|---|
| 产品名称 | Anti-Cathepsin K抗体 |
| 描述 | 兔多克隆抗体to Cathepsin K |
| 宿主 | Rabbit |
| 经测试应用 | 适用于: WB |
| 种属反应性 | 与反应: Human 预测可用于: Mouse, Rat, Chicken, Cow, Dog, Pig, Non human primates  |
| 免疫原 | Synthetic peptide corresponding to Human Cathepsin K aa 250 to the C-terminus conjugated to keyhole limpet haemocyanin. (Peptide available as ab97980) |
| 阳性对照 | This antibody gave a positive signal in the following lysates: Human Bone Marrow Tissue; Human Lung Tissue; U2OS Whole Cell; MCF7 Whole Cell; MDA-MB-231 Whole Cell; MDA-MB-361 Whole Cell; Saos 2 Whole Cell. |
| 常规说明 | <p>The Life Science industry has been in the grips of a reproducibility crisis for a number of years. Abcam is leading the way in addressing this with our range of recombinant monoclonal antibodies and knockout edited cell lines for gold-standard validation. Please check that this product meets your needs before purchasing.</p> <p>If you have any questions, special requirements or concerns, please send us an inquiry and/or contact our Support team ahead of purchase. Recommended alternatives for this product can be found below, along with publications, customer reviews and Q&As</p> |

性能

| | |
|------|--|
| 形式 | Liquid |
| 存放说明 | Shipped at 4°C. Store at +4°C short term (1-2 weeks). Upon delivery aliquot. Store at -20°C or -80°C. Avoid freeze / thaw cycle. |
| 存储溶液 | pH: 7.40 Preservative: 0.02% Sodium azide Constituent: PBS |
| | Batches of this product that have a concentration < 1mg/ml may have BSA added as a stabilising agent. If you would like information about the formulation of a specific lot, please contact our scientific support team who will be happy to help. |

| | |
|-----|-----------------------------|
| 纯度 | Immunogen affinity purified |
| 克隆 | 多克隆 |
| 同种型 | IgG |

应用

The Abpromise guarantee **Abpromise™**承诺保证使用ab85716于以下的经测试应用

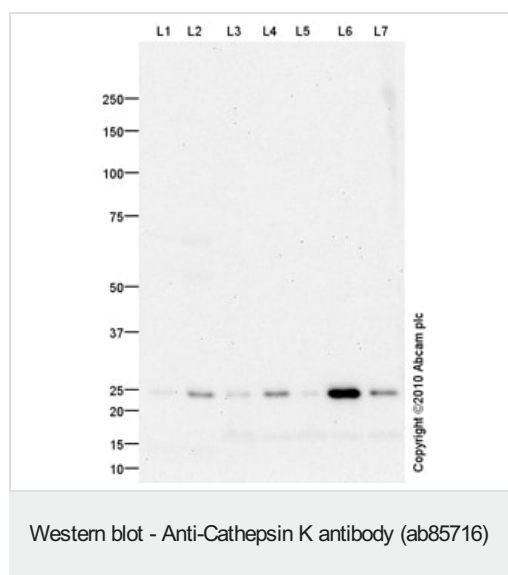
“应用说明”部分 下显示的仅为推荐的起始稀释度;实际最佳的稀释度/浓度应由使用者检定。

| 应用 | Ab评论 | 说明 |
|----|------|--|
| WB | | Use a concentration of 1 µg/ml. Detects a band of approximately 24 kDa (predicted molecular weight: 37 kDa). |

靶标

| | |
|-------|---|
| 功能 | Closely involved in osteoclastic bone resorption and may participate partially in the disorder of bone remodeling. Displays potent endoprotease activity against fibrinogen at acid pH. May play an important role in extracellular matrix degradation. |
| 组织特异性 | Predominantly expressed in osteoclasts (bones). |
| 疾病相关 | Defects in CTSK are the cause of pycnodysostosis (PKND) [MIM:265800]. PKND is an autosomal recessive osteochondrodysplasia characterized by osteosclerosis and short stature. |
| 序列相似性 | Belongs to the peptidase C1 family. |
| 细胞定位 | Lysosome. |

图片



All lanes : Anti-Cathepsin K antibody (ab85716) at 1 µg/ml

Lane 1 : Bone marrow (Human) Tissue Lysate

Lane 2 : Lung (Human) Tissue Lysate

Lane 3 : U2OS (Human osteosarcoma cell line) Whole Cell Lysate

Lane 4 : MCF7 (Human breast adenocarcinoma cell line) Whole Cell Lysate

Lane 5 : MDA-MB-231 (Human breast adenocarcinoma cell line) Whole Cell Lysate

Lane 6 : MDA-MB-361 (Human breast adenocarcinoma cell line) Whole Cell Lysate

Lane 7 : Saos 2 (Human epithelial-like osteosarcoma cell line) Whole Cell Lysate

Lysates/proteins at 10 µg per lane.

Secondary

All lanes : Goat polyclonal to Rabbit IgG - H&L - Pre-Adsorbed (HRP) at 1/3000 dilution

Developed using the ECL technique.

Performed under reducing conditions.

Predicted band size: 37 kDa

Observed band size: 24 kDa

Exposure time: 20 minutes

We hypothesize that the 24 kDa band represents the mature form of Cathepsin K.

Please note: All products are "FOR RESEARCH USE ONLY. NOT FOR USE IN DIAGNOSTIC PROCEDURES"

Our Abpromise to you: Quality guaranteed and expert technical support

- Replacement or refund for products not performing as stated on the datasheet
- Valid for 12 months from date of delivery
- Response to your inquiry within 24 hours

- We provide support in Chinese, English, French, German, Japanese and Spanish
- Extensive multi-media technical resources to help you
- We investigate all quality concerns to ensure our products perform to the highest standards

If the product does not perform as described on this datasheet, we will offer a refund or replacement. For full details of the Abpromise, please visit <https://www.abcam.cn/abpromise> or contact our technical team.

Terms and conditions

- Guarantee only valid for products bought direct from Abcam or one of our authorized distributors