

Anti-Cathepsin G antibody ab49854

[2 References](#) [1 图像](#)

概述

产品名称	Anti-Cathepsin G抗体
描述	兔多克隆抗体to Cathepsin G
宿主	Rabbit
经测试应用	适用于: WB
种属反应性	与反应: Human
免疫原	A synthetic peptide based on the propeptide domain and the N terminus of active human cathepsin G
常规说明	<p>The Life Science industry has been in the grips of a reproducibility crisis for a number of years. Abcam is leading the way in addressing this with our range of recombinant monoclonal antibodies and knockout edited cell lines for gold-standard validation. Please check that this product meets your needs before purchasing.</p> <p>If you have any questions, special requirements or concerns, please send us an inquiry and/or contact our Support team ahead of purchase. Recommended alternatives for this product can be found below, along with publications, customer reviews and Q&As</p>

性能

形式	Liquid
存放说明	Shipped at 4°C. Store at -20°C. Stable for 12 months at -20°C.
存储溶液	pH: 7.40 Preservative: 0.05% Sodium azide Constituents: PBS, 50% Glycerol, 2.9% Sodium chloride
纯度	Immunogen affinity purified
克隆	多克隆
同种型	IgG

应用

The Abpromise guarantee **Abpromise™** 承诺保证使用ab49854于以下的经测试应用

“应用说明”部分 下显示的仅为推荐的起始稀释度;实际最佳的稀释度/浓度应由使用者检定。

应用	Ab评论	说明
WB		

应用说明

WB: 1/1000 when using colorimetric substrates such as BCIP/NBT, and 1/5000 for chemiluminescent substrates. Predicted molecular weight: 29 kDa. Dilution optimised using Chromogenic detection. Not yet tested in other applications. Optimal dilutions/concentrations should be determined by the end user.

靶标

功能

Serine protease with trypsin- and chymotrypsin-like specificity. Cleaves complement C3. Has antibacterial activity against the Gram-negative bacterium *P.aeruginosa*, antibacterial activity is inhibited by LPS from *P.aeruginosa*, Z-Gly-Leu-Phe-CH₂Cl and phenylmethylsulfonyl fluoride.

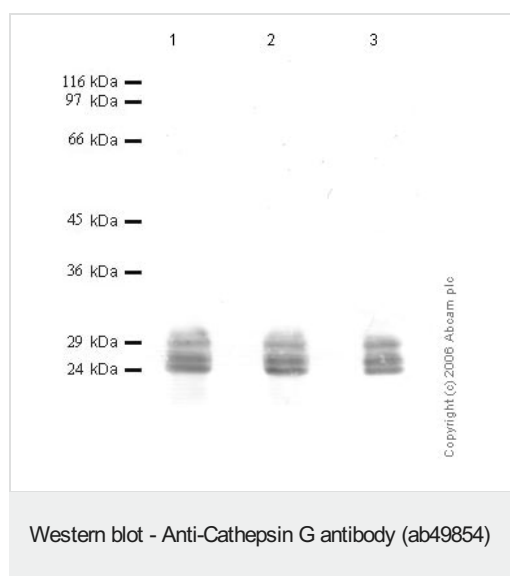
序列相似性

Belongs to the peptidase S1 family.
Contains 1 peptidase S1 domain.

细胞定位

Cell surface.

图片



All lanes : Anti-Cathepsin G antibody (ab49854) at 1/1000 dilution

Lane 1 : Human Cathepsin G at 0.01 µg

Lane 2 : Human Cathepsin G at 0.005 µg

Lane 3 : Human Cathepsin G at 0.002 µg

Predicted band size: 29 kDa

Observed band size: 24,25,29 kDa

Please note: All products are "FOR RESEARCH USE ONLY. NOT FOR USE IN DIAGNOSTIC PROCEDURES"

Our Abpromise to you: Quality guaranteed and expert technical support

- Replacement or refund for products not performing as stated on the datasheet
- Valid for 12 months from date of delivery
- Response to your inquiry within 24 hours
- We provide support in Chinese, English, French, German, Japanese and Spanish
- Extensive multi-media technical resources to help you

- We investigate all quality concerns to ensure our products perform to the highest standards

If the product does not perform as described on this datasheet, we will offer a refund or replacement. For full details of the Abpromise, please visit <https://www.abcam.cn/abpromise> or contact our technical team.

Terms and conditions

- Guarantee only valid for products bought direct from Abcam or one of our authorized distributors