




Anti-Cathepsin F antibody ab36161

1 References **1 图像**

概述

产品名称	Anti-Cathepsin F 抗体
描述	山羊多克隆抗体 to Cathepsin F
宿主	Goat
经测试应用	适用于: WB
种属反应性	与反应: Human 预测可用于: Mouse, Dog 
免疫原	Synthetic peptide: CGVNTMASSAVVD , corresponding to C terminal amino acids 472-484 of Human Cathepsin F  Run BLAST with  Run BLAST with
常规说明	<p>The Life Science industry has been in the grips of a reproducibility crisis for a number of years. Abcam is leading the way in addressing this with our range of recombinant monoclonal antibodies and knockout edited cell lines for gold-standard validation. Please check that this product meets your needs before purchasing.</p> <p>If you have any questions, special requirements or concerns, please send us an inquiry and/or contact our Support team ahead of purchase. Recommended alternatives for this product can be found below, along with publications, customer reviews and Q&As</p>

性能

形式	Liquid
存放说明	Shipped at 4°C. Upon delivery aliquot and store at -20°C. Avoid freeze / thaw cycles.
存储溶液	pH: 7.30 Preservative: 0.02% Sodium azide Constituent: 0.5% BSA
纯度	Immunogen affinity purified
纯化说明	Purified from goat serum by ammonium sulphate precipitation followed by antigen affinity chromatography using the immunizing peptide.
克隆	多克隆
同种型	IgG

应用

The Abpromise guarantee **Abpromise™**承诺保证使用ab36161于以下的经测试应用

“应用说明”部分 下显示的仅为推荐的起始稀释度;实际最佳的稀释度/浓度应由使用者检定。

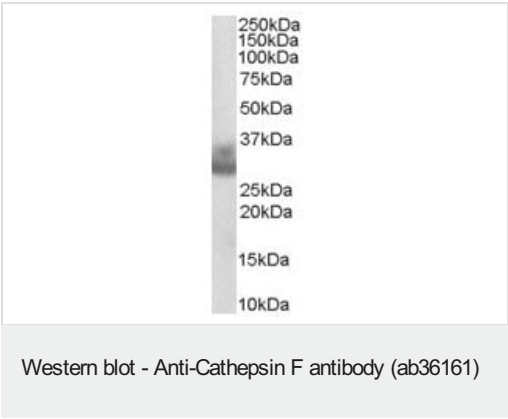
应用	Ab评论	说明
WB		

应用说明	Peptide ELISA: Antibody detection limit dilution 1:32,000. WB: Use at a concentration of 0.3 - 1 µg/ml. Predicted molecular weight: 53 kDa. Not yet tested in other applications. Optimal dilutions/concentrations should be determined by the end user.
------	---

靶标

功能	Thiol protease which is believed to participate in intracellular degradation and turnover of proteins. Has also been implicated in tumor invasion and metastasis.
组织特异性	High expression levels in heart, skeletal muscle, brain, testis and ovary; moderate levels in prostate, placenta, liver and colon; and no detectable expression in peripheral leukocytes and thymus.
序列相似性	Belongs to the peptidase C1 family.
细胞定位	Lysosome.

图片



Anti-Cathepsin F antibody (ab36161) at 0.3 µg/ml + Human Ovary lysate (35µg protein in RIPA buffer).

Predicted band size: 53 kDa

Primary incubation was 1 hour. Detected by chemiluminescence. Experiments gave bands at approx 30kDa and 35kDa in Human Prostate and Ovary lysates after 0.3µg/ml antibody staining. These bands correspond to earlier findings in literature (Wang et al, J Biol Chem. 1998 Nov 27;273(48):32000-8; PMID: 9822672). This protein has a calculated MW of 53.4kDa according to NP_003784.2.

Please note: All products are "FOR RESEARCH USE ONLY. NOT FOR USE IN DIAGNOSTIC PROCEDURES"

Our Abpromise to you: Quality guaranteed and expert technical support

- Replacement or refund for products not performing as stated on the datasheet
- Valid for 12 months from date of delivery
- Response to your inquiry within 24 hours

- We provide support in Chinese, English, French, German, Japanese and Spanish
- Extensive multi-media technical resources to help you
- We investigate all quality concerns to ensure our products perform to the highest standards

If the product does not perform as described on this datasheet, we will offer a refund or replacement. For full details of the Abpromise, please visit <https://www.abcam.cn/abpromise> or contact our technical team.

Terms and conditions

- Guarantee only valid for products bought direct from Abcam or one of our authorized distributors