

Anti-Cathepsin E antibody ab89414

2 图像

概述	
产品名称	Anti-Cathepsin E 抗体
描述	小鼠多克隆抗体 to Cathepsin E
宿主	Mouse
经测试应用	适用于: WB
种属反应性	与反应: Human
免疫原	Recombinant fragment, corresponding to amino acids 18 - 397 of Human Cathepsin E
阳性对照	Stomach lysate
常规说明	<p>The Life Science industry has been in the grips of a reproducibility crisis for a number of years. Abcam is leading the way in addressing this with our range of recombinant monoclonal antibodies and knockout edited cell lines for gold-standard validation. Please check that this product meets your needs before purchasing.</p> <p>If you have any questions, special requirements or concerns, please send us an inquiry and/or contact our Support team ahead of purchase. Recommended alternatives for this product can be found below, along with publications, customer reviews and Q&As</p>
性能	
形式	Liquid
存放说明	Shipped at 4°C. Upon delivery aliquot and store at -20°C or -80°C. Avoid repeated freeze / thaw cycles.
存储溶液	pH: 7.40 Constituent: 100% PBS
纯度	Protein A purified
克隆	多克隆
同种型	IgG
应用	

The Abpromise guarantee

Abpromise™承诺保证使用ab89414于以下的经测试应用

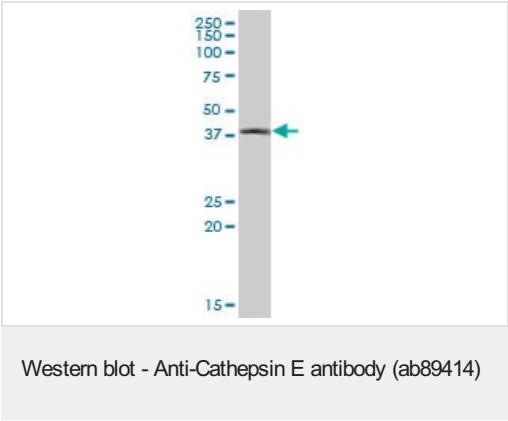
“应用说明”部分 下显示的仅为推荐的起始稀释度;实际最佳的稀释度/浓度应由使用者检定。

应用	Ab评论	说明
WB		Use a concentration of 1 µg/ml. Predicted molecular weight: 43 kDa.

靶标

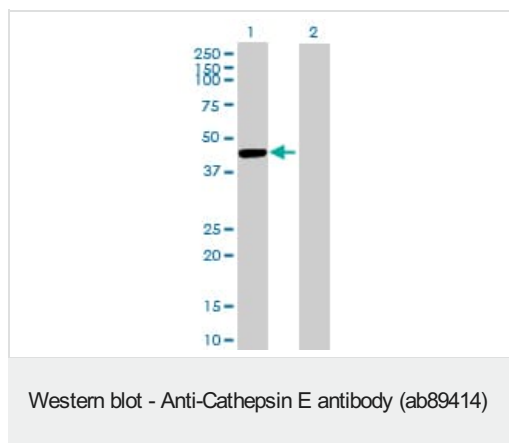
功能	May have a role in immune function. Probably involved in the processing of antigenic peptides during MHC class II-mediated antigen presentation. May play a role in activation-induced lymphocyte depletion in the thymus, and in neuronal degeneration and glial cell activation in the brain.
组织特异性	Expressed abundantly in the stomach, the Clara cells of the lung and activated B-lymphocytes, and at lower levels in lymph nodes, skin and spleen. Not expressed in resting B-lymphocytes.
序列相似性	Belongs to the peptidase A1 family.
翻译后修饰	Glycosylated. The nature of the carbohydrate chain varies between cell types. In fibroblasts, the proenzyme contains a high mannose-type oligosaccharide, while the mature enzyme contains a complex-type oligosaccharide. In erythrocyte membranes, both the proenzyme and mature enzyme contain a complex-type oligosaccharide. Two forms are produced by autocatalytic cleavage, form I begins at Ile-54, form II begins at Thr-57.
细胞定位	Endosome. The proenzyme is localized to the endoplasmic reticulum and Golgi apparatus, while the mature enzyme is localized to the endosome.

图片



Anti-Cathepsin E antibody (ab89414) at 1 µg/ml + Human stomach lysate at 50 µg

Predicted band size: 43 kDa



All lanes : Anti-Cathepsin E antibody (ab89414) at 1 µg/ml

Lane 1 : Cathepsin E transfected 293T cell lysate

Lane 2 : Non-transfected lysate

Lysates/proteins at 25 µg per lane.

Predicted band size: 43 kDa

Observed band size: 43 kDa

Please note: All products are "FOR RESEARCH USE ONLY. NOT FOR USE IN DIAGNOSTIC PROCEDURES"

Our Abpromise to you: Quality guaranteed and expert technical support

- Replacement or refund for products not performing as stated on the datasheet
- Valid for 12 months from date of delivery
- Response to your inquiry within 24 hours
- We provide support in Chinese, English, French, German, Japanese and Spanish
- Extensive multi-media technical resources to help you
- We investigate all quality concerns to ensure our products perform to the highest standards

If the product does not perform as described on this datasheet, we will offer a refund or replacement. For full details of the Abpromise, please visit <https://www.abcam.cn/abpromise> or contact our technical team.

Terms and conditions

- Guarantee only valid for products bought direct from Abcam or one of our authorized distributors