

Anti-Cathepsin D antibody ab826

★★★★★ [2 Abreviews](#) [5 References](#) [1 图像](#)

概述

产品名称	Anti-Cathepsin D抗体
描述	兔多克隆抗体to Cathepsin D
宿主	Rabbit
特异性	This antibody reacts with the zymogen as well as the activated form of cathepsin D. It stains fibroblasts and macrophages strongly but stains weakly with the myoepithelial cells of breast. It also stains sweat ducts and glands in the skin, islets cells and granules of pancreatic acini.
经测试应用	适用于: IHC-P
种属反应性	与反应: Human
免疫原	Full length protein corresponding to Human Cathepsin D. Cathepsin D isolated from human liver
常规说明	<p>The Life Science industry has been in the grips of a reproducibility crisis for a number of years. Abcam is leading the way in addressing this with our range of recombinant monoclonal antibodies and knockout edited cell lines for gold-standard validation. Please check that this product meets your needs before purchasing.</p> <p>If you have any questions, special requirements or concerns, please send us an inquiry and/or contact our Support team ahead of purchase. Recommended alternatives for this product can be found below, along with publications, customer reviews and Q&As</p>

性能

形式	Liquid
存放说明	Shipped at 4°C. Store at +4°C short term (1-2 weeks). Store at -20°C or -80°C. Avoid freeze / thaw cycle.
存储溶液	<p>pH: 7.3</p> <p>Preservative: 0.05% Sodium azide</p> <p>Constituent: 1% BSA</p>
纯度	Protein A purified
克隆	多克隆
同种型	IgG

应用

The Abpromise guarantee

Abpromise™ 承诺保证使用ab826于以下的经测试应用

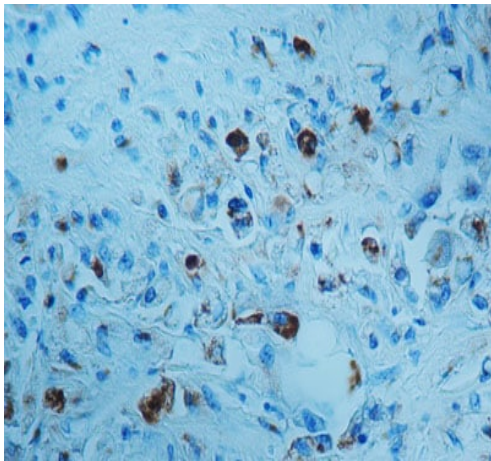
“应用说明”部分 下显示的仅为推荐的起始稀释度;实际最佳的稀释度/浓度应由使用者检定。

应用	Ab评论	说明
IHC-P	★★★★★ (1)	1/75 - 1/100. ABC method.

靶标

功能	Acid protease active in intracellular protein breakdown. Involved in the pathogenesis of several diseases such as breast cancer and possibly Alzheimer disease.
组织特异性	Expressed in the aorta extracellular space (at protein level).
疾病相关	Ceroid lipofuscinosis, neuronal, 10
序列相似性	Belongs to the peptidase A1 family. Contains 1 peptidase A1 domain.
翻译后修饰	N- and O-glycosylated.
细胞定位	Lysosome. Melanosome. Secreted, extracellular space. Identified by mass spectrometry in melanosome fractions from stage I to stage IV. In aortic samples, detected as an extracellular protein loosely bound to the matrix (PubMed:20551380).

图片



ab826 staining Cathepsin D in formalin-fixed, paraffin-embedded Human prostate tissue by Immunohistochemistry.

Immunohistochemistry (Formalin/PFA-fixed paraffin-embedded sections) - Anti-Cathepsin D antibody (ab826)

Please note: All products are "FOR RESEARCH USE ONLY. NOT FOR USE IN DIAGNOSTIC PROCEDURES"

Our Abpromise to you: Quality guaranteed and expert technical support

- Replacement or refund for products not performing as stated on the datasheet

- Valid for 12 months from date of delivery
- Response to your inquiry within 24 hours
- We provide support in Chinese, English, French, German, Japanese and Spanish
- Extensive multi-media technical resources to help you
- We investigate all quality concerns to ensure our products perform to the highest standards

If the product does not perform as described on this datasheet, we will offer a refund or replacement. For full details of the Abpromise, please visit <https://www.abcam.cn/abpromise> or contact our technical team.

Terms and conditions

- Guarantee only valid for products bought direct from Abcam or one of our authorized distributors