

Anti-Cathelicidin/CLP antibody [EPR20469] ab207758

重组 RabMAb

2 References **5 图像**

概述

产品名称	Anti-Cathelicidin/CLP抗体[EPR20469]
描述	兔单克隆抗体[EPR20469] to Cathelicidin/CLP
宿主	Rabbit
特异性	Specificity for Antibacterial peptide LL-37
经测试应用	适用于: IP, IHC-P, WB
种属反应性	与反应: Human
免疫原	Synthetic peptide. This information is proprietary to Abcam and/or its suppliers.
阳性对照	WB: Human serum and plasma; Human fetal spleen lysate. IHC-P: Human spleen and tonsil tissues. IP: Human spleen lysate.
常规说明	<p>This product is a recombinant monoclonal antibody, which offers several advantages including:</p> <ul style="list-style-type: none">- High batch-to-batch consistency and reproducibility- Improved sensitivity and specificity- Long-term security of supply- Animal-free production <p>For more information see here.</p> <p>Our RabMAb[®] technology is a patented hybridoma-based technology for making rabbit monoclonal antibodies. For details on our patents, please refer to RabMAb[®] patents.</p> <p>Mouse, Rat: We have preliminary internal testing data to indicate this antibody may not react with these species. Please contact us for more information.</p>

性能

形式	Liquid
存放说明	Shipped at 4°C. Store at +4°C short term (1-2 weeks). Upon delivery aliquot. Store at -20°C long term. Avoid freeze / thaw cycle.
存储溶液	pH: 7.2 Preservative: 0.01% Sodium azide Constituents: 59% PBS, 40% Glycerol (glycerin, glycerine), 0.05% BSA
纯度	Protein A purified

克隆 单克隆
 克隆编号 EPR20469
 同种型 IgG

应用

The Abpromise guarantee **Abpromise™**承诺保证使用ab207758于以下的经测试应用

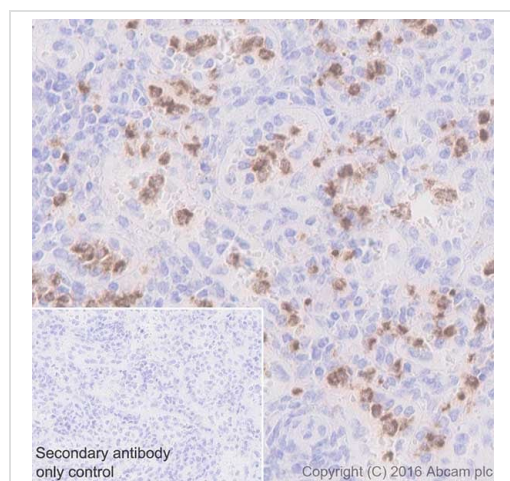
“应用说明”部分 下显示的仅为推荐的起始稀释度;实际最佳的稀释度/浓度应由使用者检定。

应用	Ab评论	说明
IP		1/30.
IHC-P		1/4000. Perform heat mediated antigen retrieval with Tris/EDTA buffer pH 9.0 before commencing with IHC staining protocol.
WB		1/1000. Detects a band of approximately 18 kDa (predicted molecular weight: 19 kDa).

靶标

功能 Binds to bacterial lipopolysaccharides (LPS), has antibacterial activity.
组织特异性 Expressed in bone marrow and testis and neutrophils.
序列相似性 Belongs to the cathelicidin family.
翻译后修饰 The N-terminus is blocked.
细胞定位 Secreted.

图片



Immunohistochemical analysis of paraffin-embedded human spleen tissue labeling Cathelicidin/CLP with ab207758 at 1/4000 dilution, followed by Goat Anti-Rabbit IgG H&L (HRP) ([ab97051](#)) at 1/500 dilution.

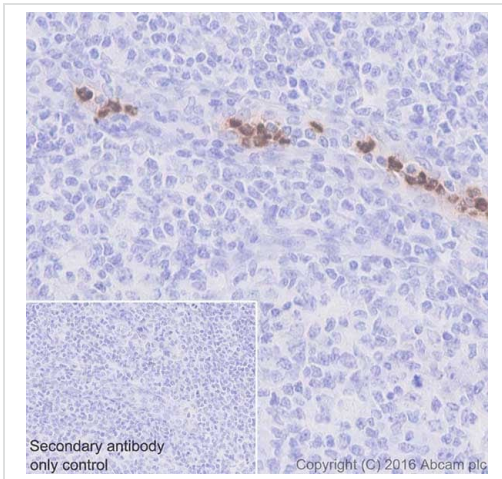
Cytoplasmic staining on neutrophils of human spleen is observed [PMID: 10858248].

Counter stained with Hematoxylin.

Secondary antibody only control: Used PBS instead of primary antibody, secondary antibody is Goat Anti-Rabbit IgG H&L (HRP) ([ab97051](#)) at 1/500 dilution.

Perform heat mediated antigen retrieval with Tris/EDTA buffer pH 9.0 before commencing with IHC staining protocol.

Immunohistochemistry (Formalin/PFA-fixed paraffin-embedded sections) - Anti-Cathelicidin/CLP antibody [EPR20469] (ab207758)



Immunohistochemistry (Formalin/PFA-fixed paraffin-embedded sections) - Anti-Cathelicidin/CLP antibody [EPR20469] (ab207758)

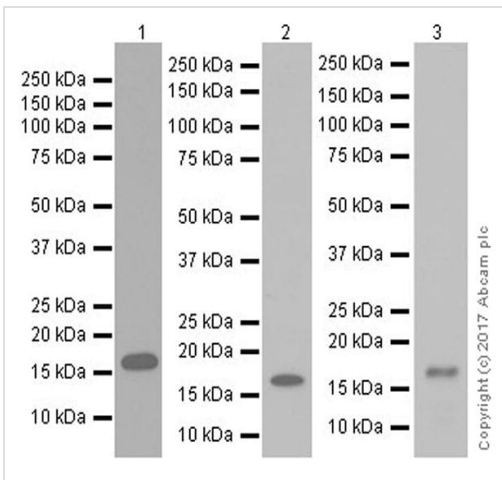
Immunohistochemical analysis of paraffin-embedded human tonsil tissue labeling Cathelicidin/CLP with ab207758 at 1/4000 dilution, followed by Goat Anti-Rabbit IgG H&L (HRP) ([ab97051](#)) at 1/500 dilution.

Cytoplasmic staining on neutrophils in a blood vessel [PMID: 10858248].

Counter stained with Hematoxylin.

Secondary antibody only control: Used PBS instead of primary antibody, secondary antibody is Goat Anti-Rabbit IgG H&L (HRP) ([ab97051](#)) at 1/500 dilution.

Perform heat mediated antigen retrieval with Tris/EDTA buffer pH 9.0 before commencing with IHC staining protocol.



Western blot - Anti-Cathelicidin/CLP antibody [EPR20469] (ab207758)

All lanes : Anti-Cathelicidin/CLP antibody [EPR20469] (ab207758) at 1/1000 dilution

Lane 1 : Human serum

Lane 2 : Human plasma

Lane 3 : Human fetal spleen lysate

Lysates/proteins at 10 µg per lane.

Secondary

All lanes : VeriBlot for IP Detection Reagent (HRP) ([ab131366](#)) at 1/4000 dilution

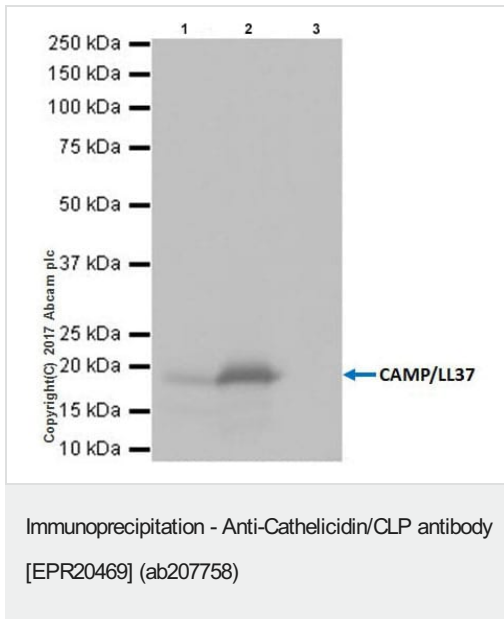
Predicted band size: 19 kDa

Observed band size: 18 kDa

Blocking/Dilution buffer: 5% NFDm/TBST.

Exposure time: Lane 1: 3 seconds; Lane 2: 3 minutes; Lane 3: 2 seconds.

The molecular weight observed is consistent with what has been described in the literature (PMID 10858248).



Cathelicidin/CLP was immunoprecipitated from 0.35 mg of human spleen lysate with ab207758 at 1/30 dilution.

Western blot was performed from the immunoprecipitate using ab207758 at 1/1000 dilution.

VeriBlot for IP Detection Reagent (HRP) ([ab131366](#)), was used for detection at 1/10000 dilution.

Lane 1: Human spleen lysate, 10 µg (Input).

Lane 2: ab207758 IP in human spleen lysate.

Lane 3: Rabbit monoclonal IgG ([ab172730](#)) instead of ab207758 in human spleen lysate.

Blocking and dilution buffer and concentration: 5% NFDm/TBST.

Exposure time: 1 second.

Why choose a recombinant antibody?

 <p>Research with confidence Consistent and reproducible results</p>	 <p>Long-term and scalable supply Recombinant technology</p>
 <p>Success from the first experiment Confirmed specificity</p>	 <p>Ethical standards compliant Animal-free production</p>

Anti-Cathelicidin/CLP antibody [EPR20469] (ab207758)

Please note: All products are "FOR RESEARCH USE ONLY. NOT FOR USE IN DIAGNOSTIC PROCEDURES"

Our Abpromise to you: Quality guaranteed and expert technical support

- Replacement or refund for products not performing as stated on the datasheet
- Valid for 12 months from date of delivery
- Response to your inquiry within 24 hours
- We provide support in Chinese, English, French, German, Japanese and Spanish
- Extensive multi-media technical resources to help you
- We investigate all quality concerns to ensure our products perform to the highest standards

If the product does not perform as described on this datasheet, we will offer a refund or replacement. For full details of the Abpromise, please visit <https://www.abcam.cn/abpromise> or contact our technical team.

Terms and conditions

- Guarantee only valid for products bought direct from Abcam or one of our authorized distributors