

# Anti-Catalase antibody [EP1929Y] - BSA and Azide free ab227116

敲除验证
重组
RabMAb

[3 References](#)
[6 图像](#)

### 概述

产品名称	Anti-Catalase抗体[EP1929Y] - BSA and Azide free
描述	兔单克隆抗体[EP1929Y] to Catalase - BSA and Azide free
宿主	Rabbit
经测试应用	<b>适用于:</b> IHC-P, WB, ICC/IF <b>不适用于:</b> Flow Cyt or IP
种属反应性	<b>与反应:</b> Human
免疫原	Synthetic peptide. This information is proprietary to Abcam and/or its suppliers.
阳性对照	WB: HeLa cell lysate. IHC-P: human brain tissue. ICC/IF: HeLa cells.
常规说明	<p>ab227116 is the carrier-free version of <a href="#">ab76024</a>.</p> <p>Our <b>carrier-free</b> antibodies are typically supplied in a PBS-only formulation, purified and free of BSA, sodium azide and glycerol. The carrier-free buffer and high concentration allow for increased conjugation efficiency.</p> <p>This conjugation-ready format is designed for use with fluorochromes, metal isotopes, oligonucleotides, and enzymes, which makes them ideal for antibody labelling, functional and cell-based assays, flow-based assays (e.g. mass cytometry) and Multiplex Imaging applications.</p> <p>Use our <b>conjugation kits</b> for antibody conjugates that are ready-to-use in as little as 20 minutes with &lt;1 minute hands-on-time and 100% antibody recovery: available for fluorescent dyes, HRP, biotin and gold.</p> <p>This product is compatible with the Maxpar<sup>®</sup> Antibody Labeling Kit from Fluidigm, without the need for antibody preparation. Maxpar<sup>®</sup> is a trademark of Fluidigm Canada Inc.</p> <p>Our RabMAb<sup>®</sup> technology is a patented hybridoma-based technology for making rabbit monoclonal antibodies. For details on our patents, please refer to <a href="#">RabMAb<sup>®</sup> patents</a>.</p> <p>Rat: We have preliminary internal testing data to indicate this antibody may not react with this species. Please contact us for more information.</p>

### 性能

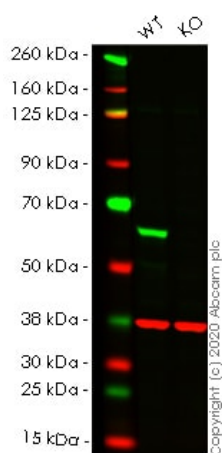
形式	Liquid
存放说明	Shipped at 4°C. Store at +4°C. Do Not Freeze.
存储溶液	pH: 7.20 Constituent: PBS
无载体	是
纯度	Protein A purified
克隆	单克隆
克隆编号	EP1929Y
同种型	IgG

## The Abpromise guarantee

“应用说明”部分下显示的仅为推荐的起始稀释度;实际最佳的稀释度/浓度应由使用者检定。

**应用说明** Is unsuitable for Flow Cyt or IP.

功能	Occurs in almost all aerobically respiring organisms and serves to protect cells from the toxic effects of hydrogen peroxide. Promotes growth of cells including T-cells, B-cells, myeloid leukemia cells, melanoma cells, mastocytoma cells and normal and transformed fibroblast cells.
疾病相关	Defects in CAT are the cause of acatalasia (ACATLAS) [MIM:115500]; also known as acatalasemia. This disease is characterized by absence of catalase activity in red cells and is often associated with ulcerating oral lesions.
序列相似性	Belongs to the catalase family.
翻译后修饰	The N-terminus is blocked.
细胞定位	Peroxisome.



Western blot - Anti-Catalase antibody [EP1929Y] - BSA and Azide free (ab227116)

**All lanes :** Anti-Catalase antibody [EP1929Y] - Peroxisome Marker (**ab76024**) at 1/10000 dilution

**Lane 1 :** Wild-type HeLa cell lysate

**Lane 2 :** CAT knockout HeLa cell lysate

Lysates/proteins at 20 µg per lane.

Performed under reducing conditions.

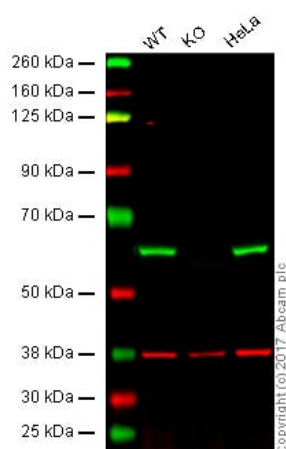
**Predicted band size:** 60 kDa

**Observed band size:** 60 kDa

This data was developed using the same antibody clone in a different buffer formulation (**ab76024**).

**Lanes 1-2:** Merged signal (red and green). Green - **ab76024** observed at 60 kDa. Red - loading control **ab8245** observed at 37 kDa.

**ab76024** Anti-Catalase antibody [EP1929Y] - Peroxisome Marker was shown to specifically react with Catalase in wild-type HeLa cells. Loss of signal was observed when knockout cell line **ab265250** (knockout cell lysate **ab256859**) was used. Wild-type and Catalase knockout samples were subjected to SDS-PAGE. **ab76024** and Anti-GAPDH antibody [6C5] - Loading Control (**ab8245**) were incubated overnight at 4°C at 1 in 10000 and 1 in 20000 dilution respectively. Blots were developed with Goat anti-Rabbit IgG H&L (IRDye® 800CW) preadsorbed (**ab216773**) and Goat anti-Mouse IgG H&L (IRDye® 680RD) preadsorbed (**ab216776**) secondary antibodies at 1 in 20000 dilution for 1 hour at room temperature before imaging.



Western blot - Anti-Catalase antibody [EP1929Y] - BSA and Azide free (ab227116)

**All lanes :** Anti-Catalase antibody [EP1929Y] - Peroxisome Marker ([ab76024](#)) at 1/5000 dilution

**Lane 1 :** Wild-type HAP1 whole cell lysate

**Lane 2 :** CAT knockout HAP1 whole cell lysate

**Lane 3 :** HeLa whole cell lysate

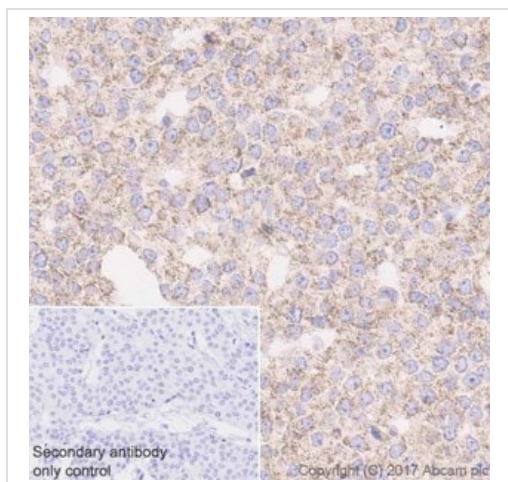
Lysates/proteins at 20 µg per lane.

**Predicted band size:** 60 kDa

This WB data was generated using the same anti-Catalase antibody clone, EP1929Y, in a different buffer formulation (cat# [ab76024](#)).

**Lanes 1 - 3:** Merged signal (red and green). Green - [ab76024](#) observed at 60 kDa. Red - loading control, [ab9484](#), observed at 37 kDa.

[ab76024](#) was shown to specifically react with CAT when CAT knockout samples were used. Wild-type and CAT knockout samples were subjected to SDS-PAGE. Ab76024 and [ab9484](#) (Mouse anti GAPDH loading control) were incubated overnight at 4°C at 1/5000 dilution and 1/20000 dilution respectively. Blots were developed with Goat anti-Rabbit IgG H&L (IRDye® 800CW) preabsorbed [ab216773](#) and Goat anti-Mouse IgG H&L (IRDye® 680RD) preabsorbed [ab216776](#) secondary antibodies at 1/20000 dilution for 1 hour at room temperature before imaging.

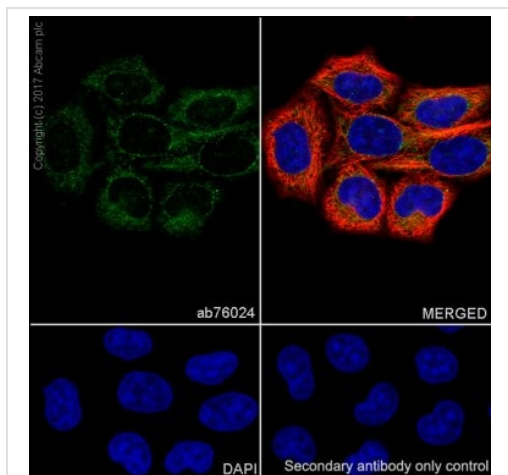


Immunohistochemistry (Formalin/PFA-fixed paraffin-embedded sections) - Anti-Catalase antibody [EP1929Y] - BSA and Azide free (ab227116)

Immunohistochemical analysis of Paraffin-embedded human bladder cancer tissue sections labeling Catalase with **ab76024** at 1/1000. Goat Anti-Rabbit IgG H&L (HRP) was used as the secondary antibody. Sections were counterstained with Hematoxylin. Antigen retrieval was heat mediated using **ab93684** (Tris/EDTA buffer, pH 9.0).

Granular cytoplasmic staining on human bladder cancer.

This data was developed using the same antibody clone in a different buffer formulation containing PBS, BSA, glycerol, and sodium azide (**ab76024**).



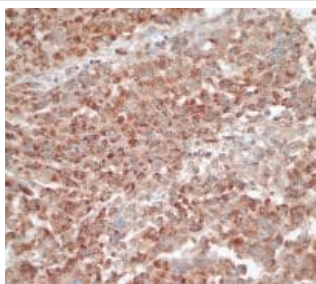
Immunocytochemistry/ Immunofluorescence - Anti-Catalase antibody [EP1929Y] - BSA and Azide free (ab227116)

Immunocytochemistry/Immunofluorescence analysis of HeLa (human cervix adenocarcinoma epithelial cell) labeling Catalase **ab76024** at 1/100. Cells were fixed with 100% Methanol. **ab150077**, an Alexa Fluor® 488-conjugated goat anti-rabbit IgG (1/1000) was used as the secondary antibody. DAPI (blue) was used as the nuclear counterstain.

**ab195889**, Anti-alpha Tubulin antibody [DM1A] - Microtubule Marker (Alexa Fluor® 594) 1/100 was used as counterstain antibody.

Confocal image showing membranous staining in HeLa cells.

This data was developed using the same antibody clone in a different buffer formulation containing PBS, BSA, glycerol, and sodium azide (**ab76024**).



Immunohistochemistry (Formalin/PFA-fixed paraffin-embedded sections) - Anti-Catalase antibody [EP1929Y] - BSA and Azide free (ab227116)

Immunohistochemical staining of Catalase in paraffin embedded human normal brain tissue using **ab76024** at a 1/100 dilution.

Perform heat mediated antigen retrieval before commencing with IHC staining protocol.

This data was developed using the same antibody clone in a different buffer formulation containing PBS, BSA, glycerol, and sodium azide (**ab76024**).

#### Why choose a recombinant antibody?



**Research with confidence**  
Consistent and reproducible results



**Long-term and scalable supply**  
Recombinant technology



**Success from the first experiment**  
Confirmed specificity



**Ethical standards compliant**  
Animal-free production

Anti-Catalase antibody [EP1929Y] - BSA and Azide free (ab227116)

**Please note:** All products are "FOR RESEARCH USE ONLY. NOT FOR USE IN DIAGNOSTIC PROCEDURES"

#### Our Abpromise to you: Quality guaranteed and expert technical support

- Replacement or refund for products not performing as stated on the datasheet
- Valid for 12 months from date of delivery
- Response to your inquiry within 24 hours
- We provide support in Chinese, English, French, German, Japanese and Spanish
- Extensive multi-media technical resources to help you
- We investigate all quality concerns to ensure our products perform to the highest standards

If the product does not perform as described on this datasheet, we will offer a refund or replacement. For full details of the Abpromise, please visit <https://www.abcam.cn/abpromise> or contact our technical team.

## Terms and conditions

---

- Guarantee only valid for products bought direct from Abcam or one of our authorized distributors