

# Anti-Caspase-10/CASP-10 antibody ab2012

★★★★★ [1 Abreviews](#) [3 References](#) [2 图像](#)

### 概述

产品名称	Anti-Caspase-10/CASP-10抗体
描述	兔多克隆抗体to Caspase-10/CASP-10
宿主	Rabbit
经测试应用	适用于: ICC, WB
种属反应性	与反应: Human
免疫原	Synthetic peptide corresponding to Human Caspase-10/CASP-10 aa 505-521 (C terminal). Sequence: ISAQTPRPPMRRWSSVS

Database link: [Q92851](#)

(Peptide available as [ab8377](#))

 [Run BLAST with](#)

 [Run BLAST with](#)

阳性对照 WB: HeLa whole cell lysate. ICC: HeLa cells.

### 常规说明

The Life Science industry has been in the grips of a reproducibility crisis for a number of years. Abcam is leading the way in addressing this with our range of recombinant monoclonal antibodies and knockout edited cell lines for gold-standard validation. Please check that this product meets your needs before purchasing.

If you have any questions, special requirements or concerns, please send us an inquiry and/or contact our Support team ahead of purchase. Recommended alternatives for this product can be found below, along with publications, customer reviews and Q&As

### 性能

形式	Liquid
存放说明	Shipped at 4°C. Store at +4°C short term (1-2 weeks). Upon delivery aliquot. Store at -20°C. Avoid freeze / thaw cycle.
存储溶液	pH: 7.2 Preservative: 0.02% Sodium azide
纯度	DEAE-Chromatography
克隆	多克隆
同种型	IgG

## 应用

**The Abpromise guarantee**      **Abpromise™**承诺保证使用ab2012于以下的经测试应用

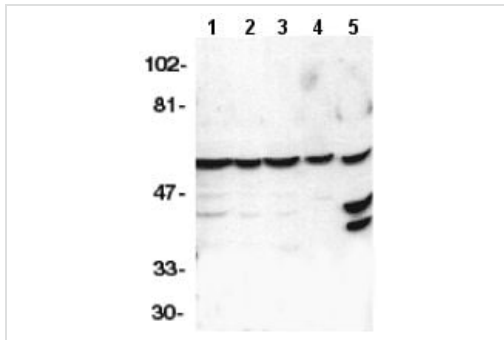
“应用说明”部分 下显示的仅为推荐的起始稀释度;实际最佳的稀释度/浓度应由使用者检定。

应用	Ab评论	说明
ICC		Use at an assay dependent concentration.
WB		1/500 - 1/1000. Detects a band of approximately 59 kDa (predicted molecular weight: 59 kDa).

## 靶标

<b>功能</b>	<p>Involved in the activation cascade of caspases responsible for apoptosis execution. Recruited to both Fas- and TNFR-1 receptors in a FADD dependent manner. May participate in the granzyme B apoptotic pathways. Cleaves and activates caspase-3, -4, -6, -7, -8, and -9. Hydrolyzes the small- molecule substrates, Tyr-Val-Ala-Asp-AMC and Asp-Glu-Val-Asp-AMC.</p> <p>Isoform C is proteolytically inactive.</p>
<b>组织特异性</b>	<p>Detectable in most tissues. Lowest expression is seen in brain, kidney, prostate, testis and colon.</p>
<b>疾病相关</b>	<p>Defects in CASP10 are the cause of autoimmune lymphoproliferative syndrome type 2A (ALPS2A) [MIM:603909]. ALPS2 is characterized by abnormal lymphocyte and dendritic cell homeostasis and immune regulatory defects.</p> <p>Defects in CASP10 are a cause of familial non-Hodgkin lymphoma (NHL) [MIM:605027]. NHL is a cancer that starts in cells of the lymph system, which is part of the body's immune system. NHLs can occur at any age and are often marked by enlarged lymph nodes, fever and weight loss.</p> <p>Defects in CASP10 are a cause of gastric cancer (GASC) [MIM:613659]. A malignant disease which starts in the stomach, can spread to the esophagus or the small intestine, and can extend through the stomach wall to nearby lymph nodes and organs. It also can metastasize to other parts of the body. The term gastric cancer or gastric carcinoma refers to adenocarcinoma of the stomach that accounts for most of all gastric malignant tumors. Two main histologic types are recognized, diffuse type and intestinal type carcinomas. Diffuse tumors are poorly differentiated infiltrating lesions resulting in thickening of the stomach. In contrast, intestinal tumors are usually exophytic, often ulcerating, and associated with intestinal metaplasia of the stomach, most often observed in sporadic disease.</p>
<b>序列相似性</b>	<p>Belongs to the peptidase C14A family.</p> <p>Contains 2 DED (death effector) domains.</p>
<b>翻译后修饰</b>	<p>Cleavage by granzyme B and autocatalytic activity generate the two active subunits.</p> <p>Phosphorylated upon DNA damage, probably by ATM or ATR.</p>

## 图片



Western blot - Anti-Caspase-10/CASP-10 antibody (ab2012)

**All lanes :** Anti-Caspase-10/CASP-10 antibody (ab2012) at 1/1000 dilution

**Lane 1 :** HeLa whole cell lysate

**Lane 2 :** Jurkat whole cell lysate

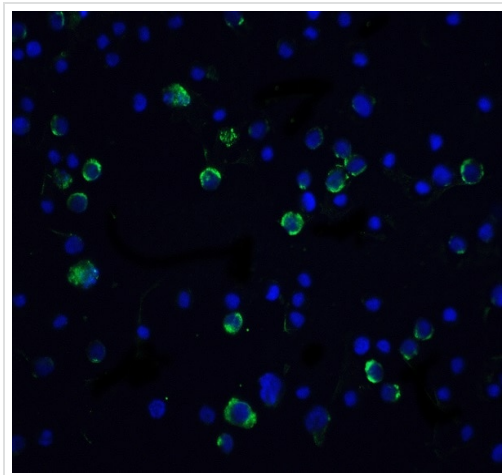
**Lane 3 :** A431 whole cell lysate

**Lane 4 :** K562 whole cell lysate

**Lane 5 :** NIH3T3 whole cell lysate

**Predicted band size:** 59 kDa

**Observed band size:** 59 kDa



Immunocytochemistry - Anti-Caspase-10/CASP-10 antibody (ab2012)

Immunocytochemistry/Immunofluorescence of HeLa cells labeling Caspase-10/CASP-10 with Anti-Caspase-10/CASP-10 antibody (ab2012) at 5µg/ml.

**Please note:** All products are "FOR RESEARCH USE ONLY. NOT FOR USE IN DIAGNOSTIC PROCEDURES"

### Our Promise to you: Quality guaranteed and expert technical support

- Replacement or refund for products not performing as stated on the datasheet
- Valid for 12 months from date of delivery
- Response to your inquiry within 24 hours
- We provide support in Chinese, English, French, German, Japanese and Spanish
- Extensive multi-media technical resources to help you
- We investigate all quality concerns to ensure our products perform to the highest standards

If the product does not perform as described on this datasheet, we will offer a refund or replacement. For full details of the Abpromise, please visit <https://www.abcam.cn/abpromise> or contact our technical team.

## Terms and conditions

---

- Guarantee only valid for products bought direct from Abcam or one of our authorized distributors