

Anti-Caspase-1 antibody ab62698

★★★★★ [1 Abreviews](#) [20 References](#) [2 图像](#)

概述

产品名称	Anti-Caspase-1抗体
描述	兔多克隆抗体to Caspase-1
宿主	Rabbit
特异性	ab62698 recognizes Caspase-1 subunit p10.
经测试应用	适用于: WB, IHC-P
种属反应性	与反应: Human
免疫原	Synthetic peptide corresponding to Human Caspase-1. Database link: P29466
阳性对照	Human brain tissue.
常规说明	<p>The Life Science industry has been in the grips of a reproducibility crisis for a number of years. Abcam is leading the way in addressing this with our range of recombinant monoclonal antibodies and knockout edited cell lines for gold-standard validation. Please check that this product meets your needs before purchasing.</p> <p>If you have any questions, special requirements or concerns, please send us an inquiry and/or contact our Support team ahead of purchase. Recommended alternatives for this product can be found below, along with publications, customer reviews and Q&As</p>

性能

形式	Liquid
存放说明	Shipped at 4°C. Store at +4°C short term (1-2 weeks). Upon delivery aliquot. Store at -20°C. Avoid freeze / thaw cycle.
存储溶液	pH: 7.40 Preservative: 0.02% Sodium azide Constituents: 49% PBS, 50% Glycerol, 0.87% Sodium chloride
纯度	Without Mg ²⁺ and Ca ²⁺ Protein A purified
纯化说明	ab62698 was affinity purified from rabbit antiserum by affinity chromatography using epitope specific immunogen.
克隆	多克隆

应用

The Abpromise guarantee **Abpromise™**承诺保证使用ab62698于以下的经测试应用

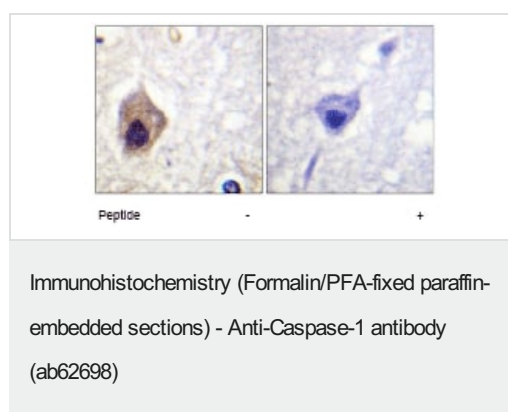
“应用说明”部分 下显示的仅为推荐的起始稀释度;实际最佳的稀释度/浓度应由使用者检定。

应用	Ab评论	说明
WB		1/500 - 1/1000.
IHC-P		1/50 - 1/100.

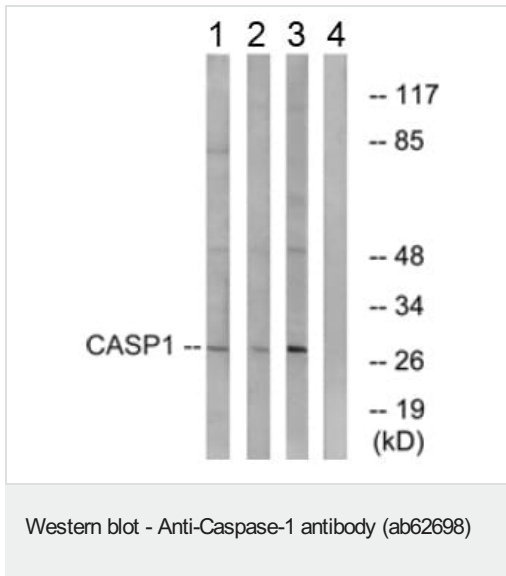
靶标

功能	Thiol protease that cleaves IL-1 beta between an Asp and an Ala, releasing the mature cytokine which is involved in a variety of inflammatory processes. Important for defense against pathogens. Cleaves and activates sterol regulatory element binding proteins (SREBPs). Can also promote apoptosis.
组织特异性	Expressed in larger amounts in spleen and lung. Detected in liver, heart, small intestine, colon, thymus, prostate, skeletal muscle, peripheral blood leukocytes, kidney and testis. No expression in the brain.
序列相似性	Belongs to the peptidase C14A family. Contains 1 CARD domain.
翻译后修饰	The two subunits are derived from the precursor sequence by an autocatalytic mechanism.
细胞定位	Cytoplasm.

图片



ab62698 at a 1:50 dilution, staining Caspase-1 in paraffin embedded human brain tissue by Immunohistochemistry in the absence (left image) or presence (right image) of the immunising peptide.



All lanes : Anti-Caspase-1 antibody (ab62698)

Lane 1 : 293 cell extract

Lane 2 : MCF-7 cell extract

Lane 3 : HeLa cell extract

Lane 4 : 293 cell extract with blocking peptide

Observed band size: 29 kDa

Please note: All products are "FOR RESEARCH USE ONLY. NOT FOR USE IN DIAGNOSTIC PROCEDURES"

Our Abpromise to you: Quality guaranteed and expert technical support

- Replacement or refund for products not performing as stated on the datasheet
- Valid for 12 months from date of delivery
- Response to your inquiry within 24 hours
- We provide support in Chinese, English, French, German, Japanese and Spanish
- Extensive multi-media technical resources to help you
- We investigate all quality concerns to ensure our products perform to the highest standards

If the product does not perform as described on this datasheet, we will offer a refund or replacement. For full details of the Abpromise, please visit <https://www.abcam.cn/abpromise> or contact our technical team.

Terms and conditions

- Guarantee only valid for products bought direct from Abcam or one of our authorized distributors