

Anti-Carma 1/CARD11 antibody [EPR2557] ab124730

重组 RabMAb

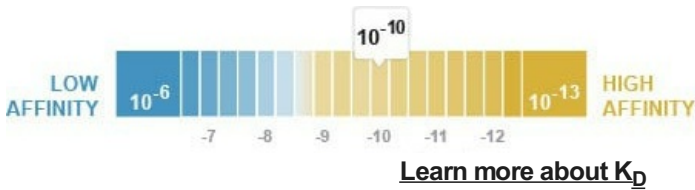
3 图像

概述

产品名称	Anti-Carma 1/CARD11抗体[EPR2557]
描述	兔单克隆抗体[EPR2557] to Carma 1/CARD11
宿主	Rabbit
经测试应用	适用于: WB 不适用于: Flow Cyt, ICC/IF, IHC-P or IP
种属反应性	与反应: Human 不与反应: Mouse, Rat
免疫原	Synthetic peptide within Human Carma 1/CARD11 aa 1100-1200 (C terminal). The exact sequence is proprietary.
阳性对照	Lysates of: Molt-4, Ramos, Jurkat, K562
常规说明	<p>This product is a recombinant monoclonal antibody, which offers several advantages including:</p> <ul style="list-style-type: none">- High batch-to-batch consistency and reproducibility- Improved sensitivity and specificity- Long-term security of supply- Animal-free production <p>For more information see here.</p> <p>Our RabMAb[®] technology is a patented hybridoma-based technology for making rabbit monoclonal antibodies. For details on our patents, please refer to RabMAb[®] patents.</p>

性能

形式	Liquid
存放说明	Shipped at 4°C. Store at -20°C. Stable for 12 months at -20°C.
解离常数 (K _D)	K _D = 2.12 x 10 ⁻¹⁰ M



存储溶液	pH: 7.20
------	----------

纯度 Protein A purified

克隆 单克隆

克隆编号 EPR2557

同种型 IgG

The Abpromise guarantee

“应用说明”部分 下显示的仅为推荐的起始稀释度;实际最佳的稀释度/浓度应由使用者检定。

应用说明 Is unsuitable for Flow Cyt, ICC/IF, IHC-P or IP.

功能

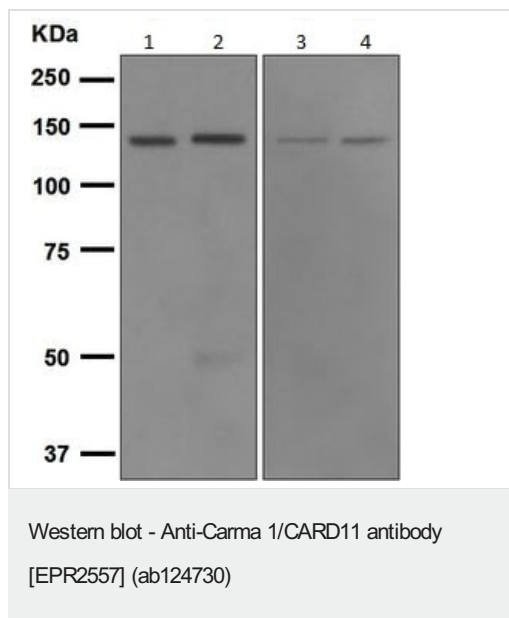
组织特异性	Detected in adult peripheral blood leukocytes, thymus, spleen and liver. Also found in promyelocytic leukemia HL-60 cells, chronic myelogenous leukemia K562 cells, Burkitt's lymphoma Raji cells and colorectal adenocarcinoma SW480 cells. Not detected in HeLa S3, Molt-4, A549 and G431 cells.
--------------	--

序列相似性	Contains 1 CARD domain. Contains 1 guanylate kinase-like domain. Contains 1 PDZ (DHR) domain.
-------	---

翻译后修饰 Phosphorylation at Ser-559, Ser-644 and Ser-652 by PRKCBB leads to a shift from an inactive to an active form that activates the NF-kappa-B signaling.

细胞定位	Cytoplasm. Membrane raft. Colocalized with DPP4 in membrane rafts.
------	--

2



All lanes : Anti-Carma 1/CARD11 antibody [EPR2557] (ab124730)

Lane 1 : Molt-4 cell lysate

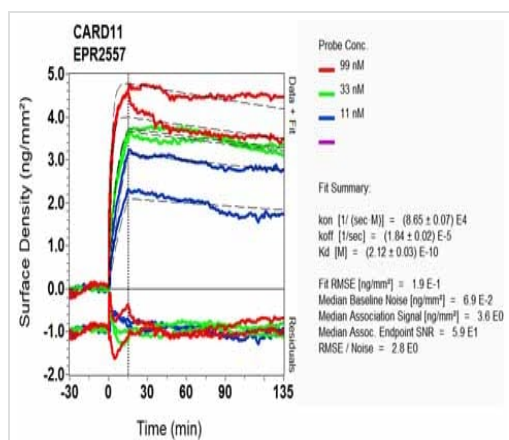
Lane 2 : Ramos cell lysate

Lane 3 : Jurkat cell lysate

Lane 4 : K562 cell lysate

Lysates/proteins at 10 µg per lane.

Predicted band size: 133 kDa



OI-RD Scanning - Anti-Carma 1/CARD11 antibody [EPR2557] (ab124730)

Equilibrium disassociation constant (K_D)

Learn more about K_D

[Click here to learn more about \$K_D\$](#)

Why choose a recombinant antibody?



Research with confidence
Consistent and reproducible results



Long-term and scalable supply
Recombinant technology



Success from the first experiment
Confirmed specificity



Ethical standards compliant
Animal-free production

Anti-Carma 1/CARD11 antibody [EPR2557]
(ab124730)

Please note: All products are "FOR RESEARCH USE ONLY. NOT FOR USE IN DIAGNOSTIC PROCEDURES"

Our Abpromise to you: Quality guaranteed and expert technical support

- Replacement or refund for products not performing as stated on the datasheet
- Valid for 12 months from date of delivery
- Response to your inquiry within 24 hours
- We provide support in Chinese, English, French, German, Japanese and Spanish
- Extensive multi-media technical resources to help you
- We investigate all quality concerns to ensure our products perform to the highest standards

If the product does not perform as described on this datasheet, we will offer a refund or replacement. For full details of the Abpromise, please visit <https://www.abcam.cn/abpromise> or contact our technical team.

Terms and conditions

- Guarantee only valid for products bought direct from Abcam or one of our authorized distributors