


# Anti-Carma 1/CARD11 antibody ab113409

**2 References**   **3 图像**

### 概述

产品名称	Anti-Carma 1/CARD11抗体
描述	兔多克隆抗体to Carma 1/CARD11
宿主	Rabbit
经测试应用	适用于: WB, IHC-P
种属反应性	与反应: Human 预测可用于: Mouse, Cow 
免疫原	Recombinant full length protein corresponding to Human Carma 1/CARD11.
阳性对照	Human Liver and Brain cerebellum tissues; A431 and Raji whole cell lysates. The pattern of staining with this antibody is similar to that observed with <a href="#">ab189167</a> and <a href="#">ab115471</a> in that the reagent stains macrophages, mast cells, subsets of lymphocytes and plasma cells in various organs across the body. It also stains adrenal cortex, heart, kidney, small intestine epithelium, skeletal muscle, and pancreatic exocrine epithelium and Kupffer cells in the liver
常规说明	<p>The Life Science industry has been in the grips of a reproducibility crisis for a number of years. Abcam is leading the way in addressing this with our range of recombinant monoclonal antibodies and knockout edited cell lines for gold-standard validation. Please check that this product meets your needs before purchasing.</p> <p>If you have any questions, special requirements or concerns, please send us an inquiry and/or contact our Support team ahead of purchase. Recommended alternatives for this product can be found below, along with publications, customer reviews and Q&amp;As</p>

### 性能

形式	Liquid
存放说明	Shipped at 4°C. Upon delivery aliquot and store at -20°C. Avoid repeated freeze / thaw cycles.
存储溶液	pH: 7.00 Preservative: 0.01% Thimerosal (merthiolate) Constituents: 89% Tris glycine, 10% Glycerol (glycerin, glycerine)
纯度	Protein A purified
克隆	多克隆
同种型	IgG

## 应用

### The Abpromise guarantee

**Abpromise™**承诺保证使用ab113409于以下的经测试应用

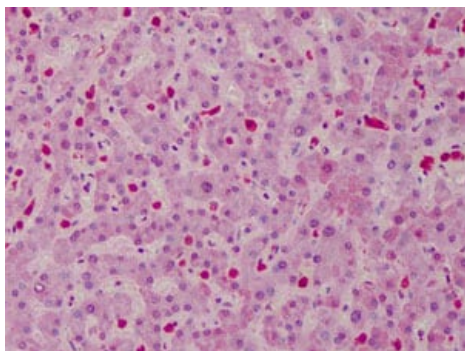
“应用说明”部分 下显示的仅为推荐的起始稀释度;实际最佳的稀释度/浓度应由使用者检定。

应用	Ab评论	说明
WB		1/500 - 1/3000. Predicted molecular weight: 133 kDa.
IHC-P		1/100. Antigen retrieval conditions: Steam slides in 0.01 M sodium citrate buffer, pH 6.0 at 99-100°C - 20 minute

## 靶标

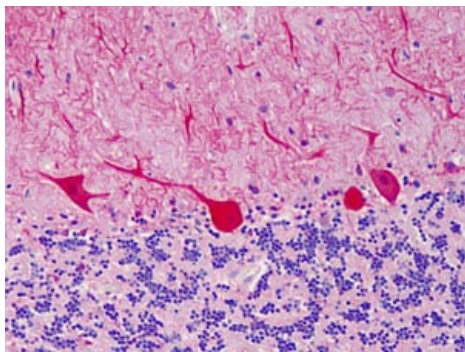
功能	Involved in the costimulatory signal essential for T-cell receptor (TCR)-mediated T-cell activation. Its binding to DPP4 induces T-cell proliferation and NF-kappa-B activation in a T-cell receptor/CD3-dependent manner. Activates NF-kappa-B via BCL10 and IKK. Stimulates the phosphorylation of BCL10.
组织特异性	Detected in adult peripheral blood leukocytes, thymus, spleen and liver. Also found in promyelocytic leukemia HL-60 cells, chronic myelogenous leukemia K562 cells, Burkitt's lymphoma Raji cells and colorectal adenocarcinoma SW480 cells. Not detected in HeLa S3, Molt-4, A549 and G431 cells.
序列相似性	Contains 1 CARD domain. Contains 1 guanylate kinase-like domain. Contains 1 PDZ (DHR) domain.
翻译后修饰	Phosphorylation at Ser-559, Ser-644 and Ser-652 by PRKCBB leads to a shift from an inactive to an active form that activates the NF-kappa-B signaling.
细胞定位	Cytoplasm. Membrane raft. Colocalized with DPP4 in membrane rafts.

## 图片



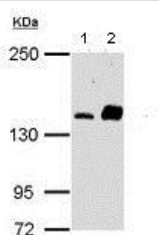
Immunohistochemistry of Formalin-fixed, Paraffin-embedded Kupffer cells in the sinusoids of the liver labeling Carma 1/CARD11 using ab113409 at 10 µg/ml. Image shows staining of macrophages, mast cells, subsets of lymphocytes and plasma cells.

Immunohistochemistry (Formalin/PFA-fixed paraffin-embedded sections) - Anti-Carma 1/CARD11 antibody (ab113409)



Immunohistochemistry (Formalin/PFA-fixed paraffin-embedded sections) - Anti-Carma 1/CARD11 antibody (ab113409)

Immunohistochemistry of Formalin-fixed, Paraffin-embedded Purkinje cells and fibers in the human cerebellum labeling Carma 1/CARD11 using ab113409 at 10 µg/ml. Image shows staining of macrophages, mast cells, subsets of lymphocytes and plasma cells.



Western blot - Anti-Carma 1/CARD11 antibody (ab113409)

**All lanes :** Anti-Carma 1/CARD11 antibody (ab113409) at 1/1000 dilution

**Lane 1 :** A431 whole cell lysate

**Lane 2 :** Raji whole cell lysate

Lysates/proteins at 30 µg per lane.

**Predicted band size:** 133 kDa

5% SDS PAGE

**Please note:** All products are "FOR RESEARCH USE ONLY. NOT FOR USE IN DIAGNOSTIC PROCEDURES"

### Our Abpromise to you: Quality guaranteed and expert technical support

- Replacement or refund for products not performing as stated on the datasheet
- Valid for 12 months from date of delivery
- Response to your inquiry within 24 hours
- We provide support in Chinese, English, French, German, Japanese and Spanish
- Extensive multi-media technical resources to help you
- We investigate all quality concerns to ensure our products perform to the highest standards

If the product does not perform as described on this datasheet, we will offer a refund or replacement. For full details of the Abpromise, please visit <https://www.abcam.cn/abpromise> or contact our technical team.

### Terms and conditions

- Guarantee only valid for products bought direct from Abcam or one of our authorized distributors

