

Anti-Cardiac Troponin T antibody [1F11] ab10214

★★★★★ [5 Abreviews](#) [59 References](#) [2 图像](#)

概述

产品名称	Anti-Cardiac Troponin T抗体[1F11]
描述	小鼠单克隆抗体[1F11] to Cardiac Troponin T
宿主	Mouse
特异性	Suitable for use in Surface Plasmon Resonance Biosensing (PubMed: 20633583 and 20694813)
经测试应用	适用于: Sandwich ELISA, ICC
种属反应性	与反应: Human, Recombinant fragment
免疫原	Tissue, cells or virus corresponding to Human Cardiac Troponin T. Free human cardiac troponin T
表位	Peptide 146-160.
阳性对照	ICC: ioSkeletal Myocytes - Human iPSC-Derived Skeletal Myocytes (ab277612)
常规说明	<p>This product was changed from ascites to tissue culture supernatant on 30th May 2018. Please note that the dilutions may need to be adjusted accordingly. If you have any questions, please do not hesitate to contact our scientific support team.</p> <p>Concentration varies from lot to lot and can be provided on request.</p> <p>Does not cross-react with skeletal muscle troponin T, cTnI or TnC.</p> <p>The Life Science industry has been in the grips of a reproducibility crisis for a number of years. Abcam is leading the way in addressing this with our range of recombinant monoclonal antibodies and knockout edited cell lines for gold-standard validation. Please check that this product meets your needs before purchasing.</p> <p>If you have any questions, special requirements or concerns, please send us an inquiry and/or contact our Support team ahead of purchase. Recommended alternatives for this product can be found below, along with publications, customer reviews and Q&As</p>

性能

形式	Liquid
存放说明	Shipped at 4°C. Upon delivery aliquot and store at -20°C. Avoid freeze / thaw cycles.
存储溶液	<p>pH: 7.40</p> <p>Preservative: 0.1% Sodium azide</p> <p>Constituent: PBS</p>
纯度	Protein A purified

纯化说明	Purity tested by electrophoresis.
Primary antibody说明	Does not cross-react with skeletal muscle troponin T, cTnI or TnC.
克隆	单克隆
克隆编号	1F11
骨髓瘤	Sp2/0
同种型	IgG2b

应用

The Abpromise guarantee

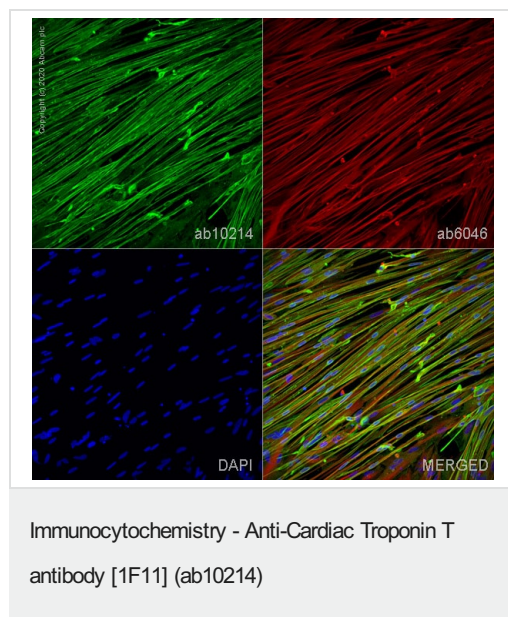
Abpromise™承诺保证使用ab10214于以下的经测试应用

“应用说明”部分 下显示的仅为推荐的起始稀释度;实际最佳的稀释度/浓度应由使用者检定。

应用	Ab评论	说明
Sandwich ELISA		Use a concentration of 5 µg/ml. Can be paired for Sandwich ELISA with <u>Rabbit polyclonal to Cardiac Troponin T (ab45932)</u> . For sandwich ELISA, use this antibody as Capture at 5 µg/ml with <u>Rabbit polyclonal to cardiac Troponin T (ab45932)</u> as Detection.
ICC	★★★★☆ (2)	Use a concentration of 1 - 5 µg/ml.

靶标

功能	Troponin T is the tropomyosin-binding subunit of troponin, the thin filament regulatory complex which confers calcium-sensitivity to striated muscle actomyosin ATPase activity.
组织特异性	Heart. The fetal heart shows a greater expression in the atrium than in the ventricle, while the adult heart shows a greater expression in the ventricle than in the atrium. Isoform 6 predominates in normal adult heart. Isoforms 1, 7 and 8 are expressed in fetal heart. Isoform 7 is also expressed in failing adult heart.
疾病相关	<p>Defects in TNNT2 are the cause of cardiomyopathy familial hypertrophic type 2 (CMH2) [MIM:115195]. Familial hypertrophic cardiomyopathy is a hereditary heart disorder characterized by ventricular hypertrophy, which is usually asymmetric and often involves the interventricular septum. The symptoms include dyspnea, syncope, collapse, palpitations, and chest pain. They can be readily provoked by exercise. The disorder has inter- and intrafamilial variability ranging from benign to malignant forms with high risk of cardiac failure and sudden cardiac death.</p> <p>Defects in TNNT2 are the cause of cardiomyopathy dilated type 1D (CMD1D) [MIM:601494]. Dilated cardiomyopathy is a disorder characterized by ventricular dilation and impaired systolic function, resulting in congestive heart failure and arrhythmia. Patients are at risk of premature death.</p> <p>Defects in TNNT2 are the cause of cardiomyopathy familial restrictive type 3 (RCM3) [MIM:612422]. Restrictive cardiomyopathy is a heart disorder characterized by impaired filling of the ventricles with reduced diastolic volume, in the presence of normal or near normal wall thickness and systolic function.</p>
序列相似性	Belongs to the troponin T family.

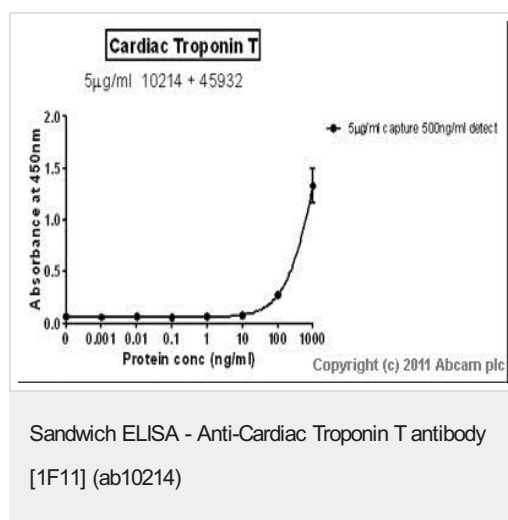


Immunofluorescence staining of Cardiac Troponin T using ab10214 in ioSkeletal Myocytes - Human iPSC-Derived Skeletal Myocytes ([ab277612](#)), which were differentiated for 10 days post induction.

The cells were fixed with 100% MeOH (5 min) and then blocked with 1% BSA/10% normal goat serum/0.3M glycine in 0.1% PBS-Tween for 1h. The cells were then incubated overnight at +4°C with ab10214 at 1 µg/mL and [ab6046](#), rabbit polyclonal to beta Tubulin, at 1/1000 dilution. Cells were then incubated with [ab150117](#), Goat Anti-Mouse IgG H&L (Alexa Fluor® 488) preadsorbed at 1/1000 dilution (shown in green) and [ab150088](#), Goat Anti-Rabbit IgG H&L (Alexa Fluor® 594) preadsorbed at 1/1000 dilution (shown in red). Nuclear DNA was labelled with DAPI (shown in blue).

Image was acquired with a high-content analyser (Operetta CLS, Perkin Elmer) and a maximum intensity projection of confocal sections is shown. Gamma is adjusted to 1.5 in all channels.

The antibody ab10214 also gave a positive staining using 4% formaldehyde fixation (10 min).



Standard Curve for Cardiac Troponin T (Analyte: Cardiac Troponin T protein (His tag) ([ab86685](#))); dilution range 1pg/ml to 1µg/ml using Capture Antibody Mouse monoclonal [1F11] to Cardiac Troponin T (ab10214) at 5µg/ml and Detector Antibody Rabbit polyclonal to cardiac Troponin T ([ab45932](#)) at 0.5µg/ml.

Please note: All products are "FOR RESEARCH USE ONLY. NOT FOR USE IN DIAGNOSTIC PROCEDURES"

Our Abpromise to you: Quality guaranteed and expert technical support

- Replacement or refund for products not performing as stated on the datasheet
- Valid for 12 months from date of delivery
- Response to your inquiry within 24 hours
- We provide support in Chinese, English, French, German, Japanese and Spanish
- Extensive multi-media technical resources to help you
- We investigate all quality concerns to ensure our products perform to the highest standards

If the product does not perform as described on this datasheet, we will offer a refund or replacement. For full details of the Abpromise, please visit <https://www.abcam.cn/abpromise> or contact our technical team.

Terms and conditions

- Guarantee only valid for products bought direct from Abcam or one of our authorized distributors