

# Anti-Cardiac Troponin I antibody [M155] ab10237

## 1 图像

### 概述

产品名称	Anti-Cardiac Troponin I 抗体[M155]
描述	小鼠单克隆抗体[M155] to Cardiac Troponin I
宿主	Mouse
特异性	This antibody is reacting with free cardiac troponin I (cTnI) and cTnI forming complexes with other troponin components (In the presence of 5 mM EDTA). It is not affected by heparin, phosphorylation, oxidation and troponin complex formation. This antibody does not cross-react with skeletal muscle troponin I.
经测试应用	适用于: ELISA
种属反应性	与反应: Mouse, Rat, Dog, Human
免疫原	Free human cardiac troponin and/or native troponin complex.
表位	27-43 aa
常规说明	Concentration varies from lot to lot and can be provided on request.  The Life Science industry has been in the grips of a reproducibility crisis for a number of years. Abcam is leading the way in addressing this with our range of recombinant monoclonal antibodies and knockout edited cell lines for gold-standard validation. Please check that this product meets your needs before purchasing.  If you have any questions, special requirements or concerns, please send us an inquiry and/or contact our Support team ahead of purchase. Recommended alternatives for this product can be found below, along with publications, customer reviews and Q&As

### 性能

形式	Liquid
存放说明	Shipped at 4°C. Upon delivery aliquot and store at -20°C. Avoid freeze / thaw cycles.
存储溶液	pH: 7.40 Preservative: 0.1% Sodium azide Constituent: PBS
纯度	Protein A purified
纯化说明	Purity tested by electrophoresis.
克隆	单克隆

克隆编号	M155
骨髓瘤	Sp2/0
同种型	IgG1

应用

The Abpromise guarantee      **Abpromise™**承诺保证使用ab10237于以下的经测试应用

“应用说明”部分 下显示的仅为推荐的起始稀释度;实际最佳的稀释度/浓度应由使用者检定。

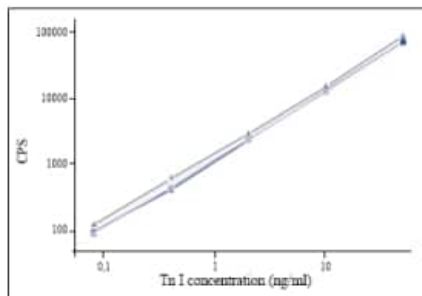
应用	Ab评论	说明
ELISA		Use at an assay dependent concentration.

靶标

功能	Troponin I is the inhibitory subunit of troponin, the thin filament regulatory complex which confers calcium-sensitivity to striated muscle actomyosin ATPase activity.
疾病相关	<p>Defects in TNNI3 are the cause of cardiomyopathy familial hypertrophic type 7 (CMH7) [MIM:613690]. Familial hypertrophic cardiomyopathy is a hereditary heart disorder characterized by ventricular hypertrophy, which is usually asymmetric and often involves the interventricular septum. The symptoms include dyspnea, syncope, collapse, palpitations, and chest pain. They can be readily provoked by exercise. The disorder has inter- and intrafamilial variability ranging from benign to malignant forms with high risk of cardiac failure and sudden cardiac death.</p> <p>Defects in TNNI3 are the cause of cardiomyopathy familial restrictive type 1 (RCM1) [MIM:115210]. RCM1 is an heart muscle disorder characterized by impaired filling of the ventricles with reduced diastolic volume, in the presence of normal or near normal wall thickness and systolic function.</p> <p>Defects in TNNI3 are the cause of cardiomyopathy dilated type 2A (CMD2A) [MIM:611880]. Dilated cardiomyopathy is a disorder characterized by ventricular dilation and impaired systolic function, resulting in congestive heart failure and arrhythmia. Patients are at risk of premature death.</p> <p>Defects in TNNI3 are the cause of cardiomyopathy dilated type 1FF (CMD1FF) [MIM:613286]. Dilated cardiomyopathy is a disorder characterized by ventricular dilation and impaired systolic function, resulting in congestive heart failure and arrhythmia. Patients are at risk of premature death.</p>

序列相似性	Belongs to the troponin I family.
-------	-----------------------------------

图片



ELISA - Anti-Cardiac Troponin I antibody [M155]  
(ab10237)

cTnI calibration curve. Monoclonal antibodies used for capture were biotinylated ab10237 (M155) at 200 ng/well. For detection Eu-labeled **ab8289** (19C7) was used at 200 ng/well. The Antigens used included Human (grey triangle), Rat (cream circle), Canine (blue circle), and Mouse (blue square). This was then incubated for 20 min at 20°C.

**Please note:** All products are "FOR RESEARCH USE ONLY. NOT FOR USE IN DIAGNOSTIC PROCEDURES"

### Our Abpromise to you: Quality guaranteed and expert technical support

- Replacement or refund for products not performing as stated on the datasheet
- Valid for 12 months from date of delivery
- Response to your inquiry within 24 hours
- We provide support in Chinese, English, French, German, Japanese and Spanish
- Extensive multi-media technical resources to help you
- We investigate all quality concerns to ensure our products perform to the highest standards

If the product does not perform as described on this datasheet, we will offer a refund or replacement. For full details of the Abpromise, please visit <https://www.abcam.cn/abpromise> or contact our technical team.

### Terms and conditions

- Guarantee only valid for products bought direct from Abcam or one of our authorized distributors