

Anti-CARD8 antibody ab24186

★★★★★ [4 Abreviews](#) [10 References](#) [4 图像](#)

| 概述 | |
|-------|---|
| 产品名称 | Anti-CARD8抗体 |
| 描述 | 兔多克隆抗体to CARD8 |
| 宿主 | Rabbit |
| 特异性 | ab24186 reacts with CARD8 (CARDINAL/TUCAN) protein. |
| 经测试应用 | 适用于: ICC/IF, WB |
| 种属反应性 | 与反应: Human |
| 免疫原 | Synthetic peptide corresponding to amino acids within the last 50 amino acids of the C terminus of human CARD8, GenBank accession AAG50014 |
| 常规说明 | <p>The Life Science industry has been in the grips of a reproducibility crisis for a number of years. Abcam is leading the way in addressing this with our range of recombinant monoclonal antibodies and knockout edited cell lines for gold-standard validation. Please check that this product meets your needs before purchasing.</p> <p>If you have any questions, special requirements or concerns, please send us an inquiry and/or contact our Support team ahead of purchase. Recommended alternatives for this product can be found below, along with publications, customer reviews and Q&As</p> |
| 性能 | |
| 形式 | Liquid |
| 存放说明 | Shipped at 4°C. Store at +4°C short term (1-2 weeks). Store at -20°C. Stable for 12 months at -20°C. |
| 存储溶液 | pH: 7.2 Preservative: 0.02% Sodium azide |
| 纯度 | Immunogen affinity purified |
| 克隆 | 多克隆 |
| 同种型 | IgG |
| 应用 | |

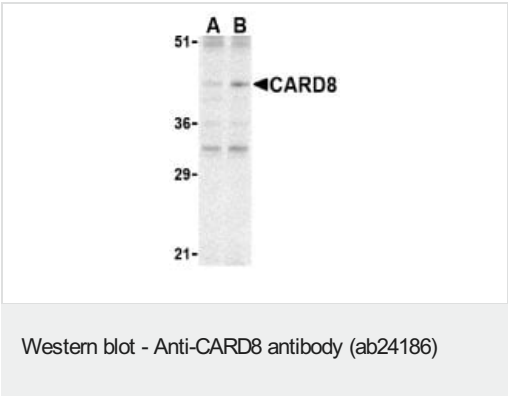
“应用说明”部分 下显示的仅为推荐的起始稀释度;实际最佳的稀释度/浓度应由使用者检定。

| 应用 | Ab评论 | 说明 |
|--------|-----------|--|
| ICC/IF | ★★★★★ (1) | Use a concentration of 10 µg/ml. |
| WB | ★★★★★ (1) | Use a concentration of 2 µg/ml. Detects a band of approximately 45 kDa (predicted molecular weight: 49 kDa). |

靶标

| | |
|-------|--|
| 功能 | Inhibits NF-kappa-B activation. May participate in a regulatory mechanism that coordinates cellular responses controlled by NF-kappa-B transcription factor. May be a component of the inflammasome, a protein complex which also includes PYCARD, NALP2 and CASP1 and whose function would be the activation of proinflammatory caspases. |
| 组织特异性 | High expression in lung, ovary, testis and placenta. Lower expression in heart, kidney and liver. Also expressed in spleen, lymph node and bone marrow. |
| 序列相似性 | Contains 1 CARD domain. |
| 细胞定位 | Cytoplasm. Nucleus. |

图片



Lane 1 : Anti-CARD8 antibody (ab24186) at 2 µg/ml (CARD8 expression in K562 cell lysate)

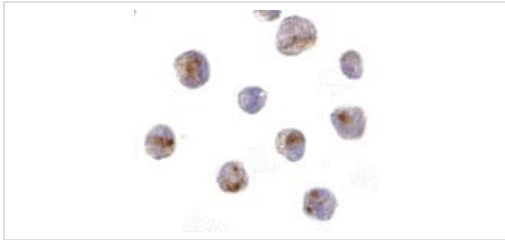
Lane 2 : Anti-CARD8 antibody (ab24186) at 4 µg/ml (CARD8 expression in K562 cell lysate)

All lanes :

Predicted band size: 49 kDa

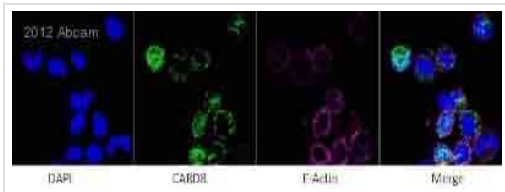
Observed band size: 45 kDa

A peptide blocking study was also done (data not shown) and the only bands that disappeared were around 45kDa. The other bands are thought to be non-specific, but more testing to confirm or refute this has not been performed.



Immunocytochemistry/ Immunofluorescence - Anti-CARD8 antibody (ab24186)

ab24186 at 10µg/ml staining CARD8 in K562 cells by ICC/IF

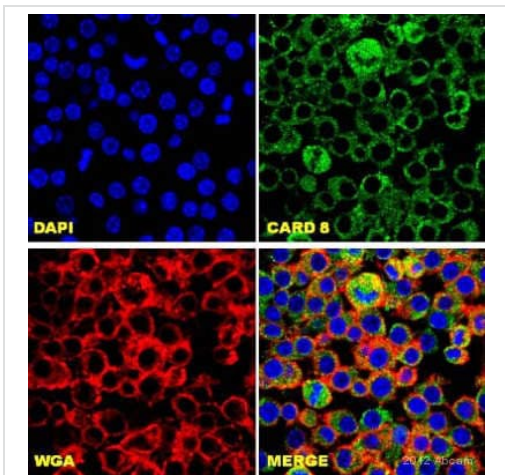


Immunocytochemistry/ Immunofluorescence - Anti-CARD8 antibody (ab24186)

Image courtesy of Dr Mahesh Shivananjappa by Abreview.

ab24186 staining CARD8 in human monocytes by Immunocytochemistry/ Immunofluorescence.

Cells were fixed, permeabilized, blocked with 2% BSA for 30 minutes at 25°C and then incubated with ab24186 at a 1/200 dilution for 4 hours at 25°C. The secondary used was an Alexa-Fluor 488 conjugated chicken anti-rabbit IgG (H+L) used at a 1/1000 dilution.



Immunocytochemistry/ Immunofluorescence - Anti-CARD8 antibody (ab24186)

This image is courtesy of an Abreview submitted by Dr Mahesh Shivananjappa

ab24186 staining CARD8 in Mouse RAW 264.7 cells by ICC/IF (Immunocytochemistry/immunofluorescence). Cells were fixed with paraformaldehyde, permeabilized with 0.1% Triton X-100 in 2% BSA and blocked with 2% serum for 1 hour at 22°C. Samples were incubated with primary antibody (1/200 in PBS + 2% BSA) for 18 hours at 4°C. An Alexa Fluor®488-conjugated Chicken anti-rabbit IgG polyclonal (1/750) was used as the secondary antibody. WGA = Wheat Germ Agglutinin

Please note: All products are "FOR RESEARCH USE ONLY. NOT FOR USE IN DIAGNOSTIC PROCEDURES"

Our Abpromise to you: Quality guaranteed and expert technical support

- Replacement or refund for products not performing as stated on the datasheet
- Valid for 12 months from date of delivery
- Response to your inquiry within 24 hours
- We provide support in Chinese, English, French, German, Japanese and Spanish

- Extensive multi-media technical resources to help you
- We investigate all quality concerns to ensure our products perform to the highest standards

If the product does not perform as described on this datasheet, we will offer a refund or replacement. For full details of the Abpromise, please visit <https://www.abcam.cn/abpromise> or contact our technical team.

Terms and conditions

- Guarantee only valid for products bought direct from Abcam or one of our authorized distributors