

Anti-CARD15/NOD2 antibody ab115542

3 图像

概述

产品名称	Anti-CARD15/NOD2抗体
描述	兔多克隆抗体to CARD15/NOD2
宿主	Rabbit
经测试应用	适用于: WB, IHC-P, ICC
种属反应性	与反应: Human
免疫原	Synthetic peptide corresponding to Human CARD15/NOD2 (C terminal) conjugated to keyhole limpet haemocyanin.
阳性对照	Human small intestine tissue; HeLa cell lysate; HeLa cells.
常规说明	<p>The Life Science industry has been in the grips of a reproducibility crisis for a number of years. Abcam is leading the way in addressing this with our range of recombinant monoclonal antibodies and knockout edited cell lines for gold-standard validation. Please check that this product meets your needs before purchasing.</p> <p>If you have any questions, special requirements or concerns, please send us an inquiry and/or contact our Support team ahead of purchase. Recommended alternatives for this product can be found below, along with publications, customer reviews and Q&As</p>

性能

形式	Liquid
存放说明	Shipped at 4°C. Store at +4°C short term (1-2 weeks). Upon delivery aliquot. Store at -20°C long term.
存储溶液	pH: 7.4 Preservative: 0.02% Sodium azide Constituent: 99% PBS
纯度	Immunogen affinity purified
克隆	多克隆
同种型	IgG

应用

The Abpromise guarantee

Abpromise™ 承诺保证使用 ab115542 于以下的经测试应用

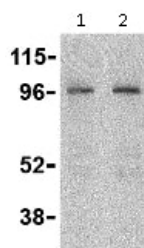
“应用说明”部分下显示的仅为推荐的起始稀释度；实际最佳的稀释度/浓度应由使用者检定。

应用	Ab 评论	说明
WB		Use a concentration of 2 - 4 µg/ml. Predicted molecular weight: 115 kDa.
IHC-P		Use a concentration of 3 µg/ml. Perform heat mediated antigen retrieval with citrate buffer pH 6 before commencing with IHC staining protocol.
ICC		Use a concentration of 10 µg/ml.

靶标

功能	Induces NF-kappa-B via RICK (CARDIAK, RIP2) and IKK-gamma. Confers responsiveness to intracellular bacterial lipopolysaccharides (LPS).
组织特异性	Monocytes-specific.
疾病相关	<p>Defects in NOD2 are the cause of Blau syndrome (BS) [MIM:186580]. BS is a rare autosomal dominant disorder characterized by early-onset granulomatous arthritis, uveitis and skin rash.</p> <p>Defects in NOD2 are a cause of susceptibility to inflammatory bowel disease type 1 (IBD1) [MIM:266600]. IBD1 is a chronic, relapsing inflammation of the gastrointestinal tract with a complex etiology. It is subdivided into Crohn disease and ulcerative colitis phenotypes. Crohn disease may affect any part of the gastrointestinal tract from the mouth to the anus, but most frequently it involves the terminal ileum and colon. Bowel inflammation is transmural and discontinuous; it may contain granulomas or be associated with intestinal or perianal fistulas. In contrast, in ulcerative colitis, the inflammation is continuous and limited to rectal and colonic mucosal layers; fistulas and granulomas are not observed. Both diseases include extraintestinal inflammation of the skin, eyes, or joints.</p> <p>Defects in NOD2 are the cause of sarcoidosis early-onset (EOS) [MIM:609464]. EOS is a form of sarcoidosis manifesting in children younger than 4 years of age. Sarcoidosis is an idiopathic, systemic, inflammatory disease characterized by the formation of immune granulomas in involved organs. Granulomas predominantly invade the lungs and the lymphatic system, but also skin, liver, spleen, eyes and other organs may be involved. Early-onset sarcoidosis is quite rare and has a distinct triad of skin, joint and eye disorders, without apparent pulmonary involvement. Compared with an asymptomatic and sometimes naturally disappearing course of the disease in older children, early-onset sarcoidosis is progressive and in many cases causes severe complications, such as blindness, joint destruction and visceral involvement.</p>
序列相似性	<p>Contains 2 CARD domains.</p> <p>Contains 9 LRR (leucine-rich) repeats.</p> <p>Contains 1 NACHT domain.</p>
细胞定位	Cytoplasm.

图片



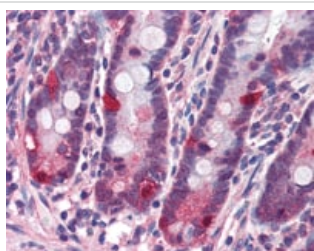
Western blot - Anti-CARD15/NOD2 antibody
(ab115542)

Lane 1 : Anti-CARD15/NOD2 antibody (ab115542) at 2 µg/ml

Lane 2 : Anti-CARD15/NOD2 antibody (ab115542) at 4 µg/ml

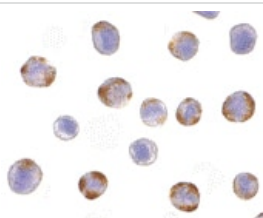
All lanes : HeLa cell lysate

Predicted band size: 115 kDa



Immunohistochemistry (Formalin/PFA-fixed paraffin-embedded sections) - Anti-CARD15/NOD2 antibody
(ab115542)

ab115542, at 3µg/ml, staining CARD15/NOD2 in Formalin-fixed, Paraffin-embedded Human Small intestine tissue by Immunohistochemistry followed by biotinylated secondary antibody, alkaline phosphatase-streptavidin and chromogen.



Immunocytochemistry - Anti-CARD15/NOD2 antibody (ab115542)

ab115542 at 10µg/ml staining CARD15/NOD2 in HeLa cells by Immunocytochemistry.

Please note: All products are "FOR RESEARCH USE ONLY. NOT FOR USE IN DIAGNOSTIC PROCEDURES"

Our Abpromise to you: Quality guaranteed and expert technical support

- Replacement or refund for products not performing as stated on the datasheet
- Valid for 12 months from date of delivery
- Response to your inquiry within 24 hours
- We provide support in Chinese, English, French, German, Japanese and Spanish
- Extensive multi-media technical resources to help you
- We investigate all quality concerns to ensure our products perform to the highest standards

If the product does not perform as described on this datasheet, we will offer a refund or replacement. For full details of the Abpromise,

please visit <https://www.abcam.cn/abpromise> or contact our technical team.

Terms and conditions

- Guarantee only valid for products bought direct from Abcam or one of our authorized distributors