

Anti-Carboxypeptidase Y antibody [10A5B5] ab113685

7 References **1 图像**

概述

产品名称	Anti-Carboxypeptidase Y抗体[10A5B5]
描述	小鼠单克隆抗体[10A5B5] to Carboxypeptidase Y
宿主	Mouse
经测试应用	适用于: WB
种属反应性	与反应: <i>Saccharomyces cerevisiae</i>
免疫原	Full length native protein (purified). This information is considered to be commercially sensitive.
阳性对照	Yeast membranes
常规说明	<p>This antibody clone is manufactured by Abcam. If you require a custom buffer formulation or conjugation for your experiments, please contact orders@abcam.com.</p> <p>The Life Science industry has been in the grips of a reproducibility crisis for a number of years. Abcam is leading the way in addressing this with our range of recombinant monoclonal antibodies and knockout edited cell lines for gold-standard validation. Please check that this product meets your needs before purchasing.</p> <p>If you have any questions, special requirements or concerns, please send us an inquiry and/or contact our Support team ahead of purchase. Recommended alternatives for this product can be found below, along with publications, customer reviews and Q&As</p> <p>Product was previously marketed under the MitoSciences sub-brand.</p>

性能

形式	Liquid
存放说明	Shipped at 4°C. Store at +4°C.
存储溶液	<p>pH: 7.5</p> <p>Preservative: 0.02% Sodium azide</p> <p>Constituent: HEPES buffered saline</p>
纯度	Proprietary Purification
纯化说明	Near homogeneity (Purity >95% by SDS-PAGE). The antibody was produced in vitro using hybridomas grown in serum-free medium, and then purified by chemical fractionation.
克隆	单克隆

克隆编号	10A5B5
同种型	IgG1
轻链类型	kappa

应用

The Abpromise guarantee **Abpromise™**承诺保证使用ab113685于以下的经测试应用

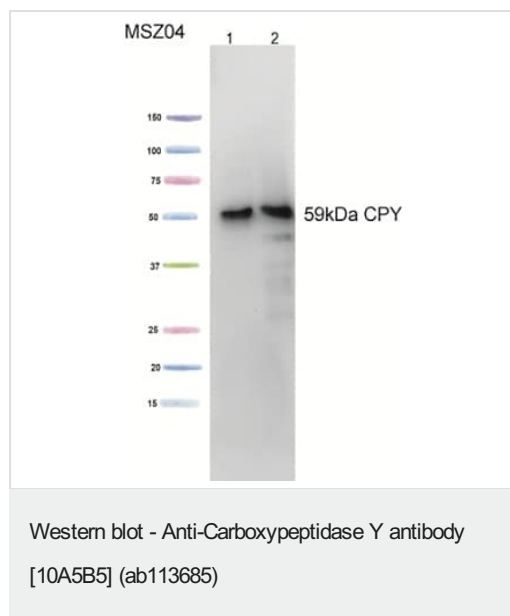
“应用说明”部分 下显示的仅为推荐的起始稀释度;实际最佳的稀释度/浓度应由使用者检定。

应用	Ab评论	说明
WB		Use a concentration of 0.5 µg/ml. Detects a band of approximately 59 kDa (predicted molecular weight: 59 kDa).

靶标

功能	Involved in degradation of small peptides. Digests preferentially peptides containing an aliphatic or hydrophobic residue in P1' position, as well as methionine, leucine or phenylalanine in P1 position of ester substrate.
序列相似性	Belongs to the peptidase S10 family.
翻译后修饰	Enters the endoplasmic reticulum as an inactive zymogen and is modified by four N-linked core oligosaccharides, giving rise to a precursor known as P1 (67 kDa). As P1 transits through the Golgi, extension of its core oligosaccharides leads to the Golgi-modified P2 precursor (69 kDa). P2 is sorted away from secretory proteins at or beyond a late Golgi compartment and is subsequently delivered to the vacuole via a prevacuolar endosome-like compartment. Upon arrival in the vacuole, the N-terminal prosegment of P2 is cleaved to yield the enzymatically active mature vacuolar form of CPY (61 kDa).
细胞定位	Vacuole. Lysosome-like vacuoles.

图片



All lanes : Anti-Carboxypeptidase Y antibody [10A5B5]
(ab113685)

Lane 1 : Yeast whole cell lysate

Lane 2 : Yeast membrane preparation

Lysates/proteins at 15 µg per lane.

Developed using the ECL technique.

Performed under reducing conditions.

Predicted band size: 59 kDa

Please note: All products are "FOR RESEARCH USE ONLY. NOT FOR USE IN DIAGNOSTIC PROCEDURES"

Our Abpromise to you: Quality guaranteed and expert technical support

- Replacement or refund for products not performing as stated on the datasheet
- Valid for 12 months from date of delivery
- Response to your inquiry within 24 hours
- We provide support in Chinese, English, French, German, Japanese and Spanish
- Extensive multi-media technical resources to help you
- We investigate all quality concerns to ensure our products perform to the highest standards

If the product does not perform as described on this datasheet, we will offer a refund or replacement. For full details of the Abpromise, please visit <https://www.abcam.cn/abpromise> or contact our technical team.

Terms and conditions

- Guarantee only valid for products bought direct from Abcam or one of our authorized distributors