

Anti-Carboxymethyl Lysine antibody [CML26] ab125145

10 References 1 图像

概述	
产品名称	Anti-Carboxymethyl Lysine抗体[CML26]
描述	小鼠单克隆抗体[CML26] to Carboxymethyl Lysine
宿主	Mouse
经测试应用	适用于: WB, IHC-P, IHC-Fr, ICC/IF, ELISA, Flow Cyt
种属反应性	与反应: Species independent
免疫原	Carboxymethyl Lysine conjugated to KLH.
阳性对照	Human cardiac tissue (intramyocardial arteries).
常规说明	Other isotypes maybe present. The Life Science industry has been in the grips of a reproducibility crisis for a number of years. Abcam is leading the way in addressing this with our range of recombinant monoclonal antibodies and knockout edited cell lines for gold-standard validation. Please check that this product meets your needs before purchasing. If you have any questions, special requirements or concerns, please send us an inquiry and/or contact our Support team ahead of purchase. Recommended alternatives for this product can be found below, along with publications, customer reviews and Q&As
性能	
形式	Liquid
存放说明	Shipped at 4°C. Upon delivery aliquot and store at -20°C. Avoid freeze / thaw cycles.
存储溶液	Preservative: 0.02% Sodium azide Constituents: 0.1% BSA, 99% PBS
纯度	Protein G purified
克隆	单克隆
克隆编号	CML26
同种型	IgG1
应用	

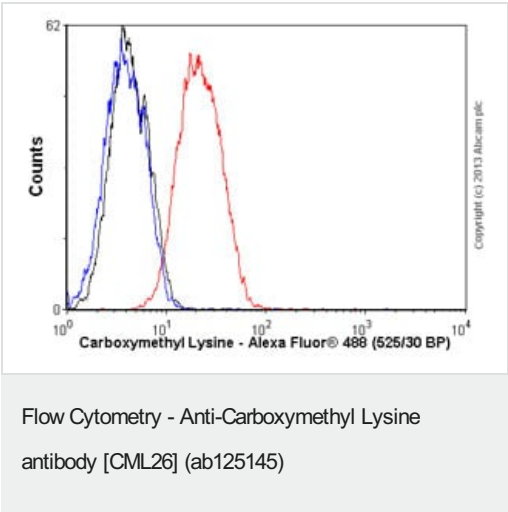
“应用说明”部分 下显示的仅为推荐的起始稀释度;实际最佳的稀释度/浓度应由使用者检定。

应用	Ab评论	说明
WB		Use at an assay dependent concentration.
IHC-P		1/50. Fix with 4% formalin.
IHC-Fr		1/50.
ICC/IF		Use at an assay dependent concentration. Fix with 2% phosphate-buffered glutaraldehyde solution.
ELISA		Use at an assay dependent concentration.
Flow Cyt		Use 0.1µg for 10 ⁶ cells. ab170190 - Mouse monoclonal IgG1, is suitable for use as an isotype control with this antibody.

靶标

相关性 N epsilon carboxymethyl lysine (CML or Carboxymethyl Lysine) is formed by the non enzymatic Schiff base reaction of glucose with proteins, followed by an Amadori rearrangement and oxidation that leaves only a carboxymethyl group attached to the lysine. The levels of CML adducts accumulate over time and have been used as an indicator of both serum glucose levels and oxidative protein damage. Elevated serum CML modified proteins have been associated with diabetes and may contribute to diabetic retinopathy, nephropathy and angiopathy.

图片



Overlay histogram showing HepG2 cells stained with ab125145 (red line). The cells were fixed with 80% methanol (5 min) and then permeabilized with 0.1% PBS-Tween for 20 min. The cells were then incubated in 1x PBS / 10% normal goat serum / 0.3M glycine to block non-specific protein-protein interactions followed by the antibody (ab125145, 0.1µg/1x10⁶ cells) for 30 min at 22°C. The secondary antibody used was Alexa Fluor® 488 goat anti-mouse IgG (H&L) (**ab150113**) at 1/2000 dilution for 30 min at 22°C. Isotype control antibody (black line) was mouse IgG1 [ICIGG1] (**ab91353**, 1µg/1x10⁶ cells) used under the same conditions. Unlabelled sample (blue line) was also used as a control. Acquisition of >5,000 events were collected using a 20mW Argon ion laser (488nm) and 525/30 bandpass filter. This antibody gave a positive signal in HepG2 cells fixed with 4% paraformaldehyde (10 min)/permeabilized with 0.1% PBS-Tween for 20 min used under the same conditions.

Please note: All products are "FOR RESEARCH USE ONLY. NOT FOR USE IN DIAGNOSTIC PROCEDURES"

Our Abpromise to you: Quality guaranteed and expert technical support

- Replacement or refund for products not performing as stated on the datasheet
- Valid for 12 months from date of delivery
- Response to your inquiry within 24 hours
- We provide support in Chinese, English, French, German, Japanese and Spanish
- Extensive multi-media technical resources to help you
- We investigate all quality concerns to ensure our products perform to the highest standards

If the product does not perform as described on this datasheet, we will offer a refund or replacement. For full details of the Abpromise, please visit <https://www.abcam.cn/abpromise> or contact our technical team.

Terms and conditions

- Guarantee only valid for products bought direct from Abcam or one of our authorized distributors