

Anti-Carboxymethyl Lysine antibody ab27684

★★★★★ [3 Abreviews](#) [37 References](#) [1 图像](#)

概述

产品名称	Anti-Carboxymethyl Lysine抗体
描述	兔多克隆抗体to Carboxymethyl Lysine
宿主	Rabbit
特异性	This antibody specifically binds to Carboxy methyl Lysine modified proteins.
经测试应用	适用于: ELISA, WB
种属反应性	与反应: Species independent
免疫原	Carboxy methyl Lysine conjugated to KLH.
常规说明	<p>The Life Science industry has been in the grips of a reproducibility crisis for a number of years. Abcam is leading the way in addressing this with our range of recombinant monoclonal antibodies and knockout edited cell lines for gold-standard validation. Please check that this product meets your needs before purchasing.</p> <p>If you have any questions, special requirements or concerns, please send us an inquiry and/or contact our Support team ahead of purchase. Recommended alternatives for this product can be found below, along with publications, customer reviews and Q&As</p>

性能

形式	Liquid
存放说明	Shipped at 4°C. Store at +4°C short term (1-2 weeks). Upon delivery aliquot. Store at -20°C long term.
存储溶液	pH: 7.20 Preservative: 0.02% Sodium azide Constituents: PBS, 0.015% EDTA, 0.44% Sodium chloride, 30% Glycerol (glycerin, glycerine), 1.23% Sodium phosphate
纯化说明	This antibody was purified by Carboxy methyl Lysine protein Sepharose affinity column.
克隆	多克隆
同种型	IgG

应用

The Abpromise guarantee

Abpromise™ 承诺保证使用ab27684于以下的经测试应用

“应用说明”部分下显示的仅为推荐的起始稀释度;实际最佳的稀释度/浓度应由使用者检定。

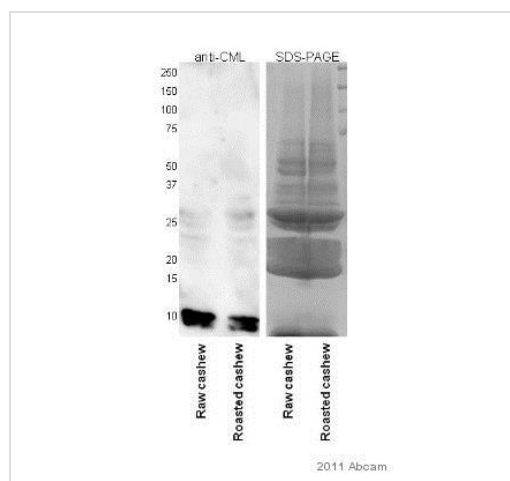
应用	Ab评论	说明
ELISA		1/2500 - 1/20000.
WB	★★★★★ (1)	1/2500 - 1/20000.

靶标

相关性

N epsilon carboxymethyl lysine (CML or Carboxymethyl Lysine) is formed by the non enzymatic Schiff base reaction of glucose with proteins, followed by an Amadori rearrangement and oxidation that leaves only a carboxymethyl group attached to the lysine. The levels of CML adducts accumulate over time and have been used as an indicator of both serum glucose levels and oxidative protein damage. Elevated serum CML modified proteins have been associated with diabetes and may contribute to diabetic retinopathy, nephropathy and angiopathy.

图片



Western blot - Anti-Carboxymethyl Lysine antibody (ab27684)

This image is courtesy of an Abreview submitted by Chris Mattison

All lanes : Anti-Carboxymethyl Lysine antibody (ab27684) at 1/1000 dilution (in PBST for 18 hours at 4°C)

Lane 1 : Whole tissue lysate of raw cashew nuts

Lane 2 : Whole tissue lysate of roasted cashew nuts

Lysates/proteins at 50 µg per lane.

Secondary

All lanes : An HRP-conjugated Goat anti-rabbit polyclonal

Developed using the ECL technique.

Observed band size: 10-12 kDa

Exposure time: 1 minute

Blocking Step: 2% Milk for 30 minutes at 25°C

Please note: All products are "FOR RESEARCH USE ONLY. NOT FOR USE IN DIAGNOSTIC PROCEDURES"

Our Abpromise to you: Quality guaranteed and expert technical support

- Replacement or refund for products not performing as stated on the datasheet
- Valid for 12 months from date of delivery
- Response to your inquiry within 24 hours

- We provide support in Chinese, English, French, German, Japanese and Spanish
- Extensive multi-media technical resources to help you
- We investigate all quality concerns to ensure our products perform to the highest standards

If the product does not perform as described on this datasheet, we will offer a refund or replacement. For full details of the Abpromise, please visit <https://www.abcam.cn/abpromise> or contact our technical team.

Terms and conditions

- Guarantee only valid for products bought direct from Abcam or one of our authorized distributors