

### Anti-CAP1 antibody ab88446

[2 References](#) [6 图像](#)

#### 概述

---

产品名称	Anti-CAP1抗体
描述	小鼠多克隆抗体to CAP1
宿主	Mouse
经测试应用	适用于: WB, Flow Cyt, ICC/IF
种属反应性	与反应: Human
免疫原	Recombinant full length protein within Human CAP1 aa 1-500. The exact immunogen sequence used to generate this antibody is proprietary information. If additional detail on the immunogen is needed to determine the suitability of the antibody for your needs, please <b>contact</b> our Scientific Support team to discuss your requirements. Database link: <a href="#">Q01518</a>
阳性对照	Human colon membrane lysate A-431 membrane lysate Transfected 293T membrane lysate HeLa cells Methanol treated human HeLa cells Methanol treated human promonocytic THP-1 cells
常规说明	<p>The Life Science industry has been in the grips of a reproducibility crisis for a number of years. Abcam is leading the way in addressing this with our range of recombinant monoclonal antibodies and knockout edited cell lines for gold-standard validation. Please check that this product meets your needs before purchasing.</p> <p>If you have any questions, special requirements or concerns, please send us an inquiry and/or contact our Support team ahead of purchase. Recommended alternatives for this product can be found below, along with publications, customer reviews and Q&amp;As</p>

#### 性能

---

形式	Liquid
存放说明	Shipped at 4°C. Upon delivery aliquot. Store at -20°C or -80°C. Avoid freeze / thaw cycle.
存储溶液	pH: 7.40 Constituent: 100% PBS
纯度	Protein A purified
克隆	多克隆
同种型	IgG

## 应用

**The Abpromise guarantee**      **Abpromise™**承诺保证使用ab88446于以下的经测试应用

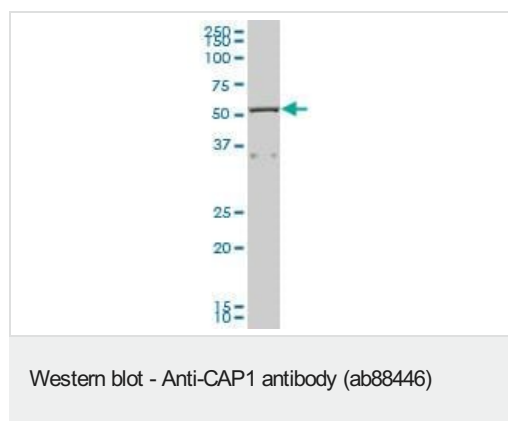
“应用说明”部分 下显示的仅为推荐的起始稀释度;实际最佳的稀释度/浓度应由使用者检定。

应用	Ab评论	说明
<b>WB</b>		Use a concentration of 1 µg/ml. Detects a band of approximately 52 kDa (predicted molecular weight: 52 kDa).
<b>Flow Cyt</b>		Use at an assay dependent concentration. <b>ab37355</b> - Mouse polyclonal IgG, is suitable for use as an isotype control with this antibody.
<b>ICC/IF</b>		Use a concentration of 10 µg/ml.

## 靶标

<b>功能</b>	Directly regulates filament dynamics and has been implicated in a number of complex developmental and morphological processes, including mRNA localization and the establishment of cell polarity.
<b>序列相似性</b>	Belongs to the CAP family. Contains 1 C-CAP/cofactor C-like domain.
<b>细胞定位</b>	Cell membrane.

## 图片



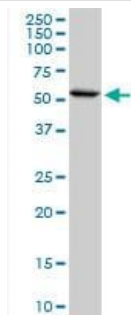
Anti-CAP1 antibody (ab88446) at 1 µg/ml + Human colon tissue at 50 µg

### Secondary

Goat Anti-Mouse IgG at 1/2500 dilution

**Predicted band size:** 52 kDa

**Observed band size:** 52 kDa



Western blot - Anti-CAP1 antibody (ab88446)

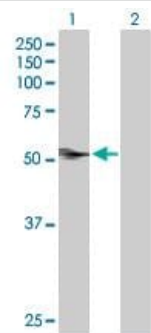
Anti-CAP1 antibody (ab88446) at 1 µg/ml + A-431 cell lysate at 50 µg

**Secondary**

Goat Anti-Mouse IgG at 1/2500 dilution

**Predicted band size:** 52 kDa

**Observed band size:** 52 kDa



Western blot - Anti-CAP1 antibody (ab88446)

**All lanes :** Anti-CAP1 antibody (ab88446) at 1 µg/ml

**Lane 1 :** Transfected 293T cell line

**Lane 2 :** Non-transfected cell line

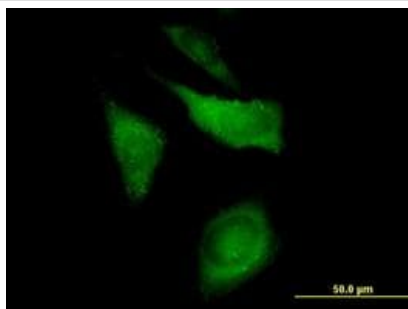
Lysates/proteins at 50 µg per lane.

**Secondary**

**All lanes :** Goat Anti-Mouse IgG at 1/2500 dilution

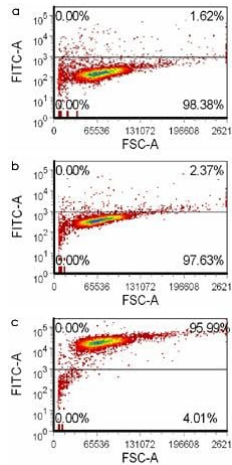
**Predicted band size:** 52 kDa

**Observed band size:** 52 kDa



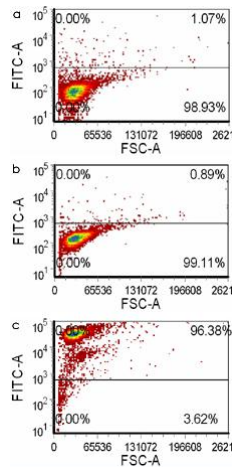
Immunocytochemistry/ Immunofluorescence - Anti-CAP1 antibody (ab88446)

Immunofluorescence image staining human CAP1 in HeLa cells, using ab88446 at 10µg/ml.



FACS analysis of (a) negative control unstained, (b) negative control goat anti-mouse-FITC stained and (c) ab88446 stained methanol-treated human HeLa cells.

Flow Cytometry - Anti-CAP1 antibody (ab88446)



FACS analysis of (a) negative control unstained, (b) negative control goat anti-mouse-FITC stained and (c) ab88446 stained methanol-treated human promonocytic THP-1 cells.

Flow Cytometry - Anti-CAP1 antibody (ab88446)

**Please note:** All products are "FOR RESEARCH USE ONLY. NOT FOR USE IN DIAGNOSTIC PROCEDURES"

### Our Abpromise to you: Quality guaranteed and expert technical support

- Replacement or refund for products not performing as stated on the datasheet
- Valid for 12 months from date of delivery
- Response to your inquiry within 24 hours

- We provide support in Chinese, English, French, German, Japanese and Spanish
- Extensive multi-media technical resources to help you
- We investigate all quality concerns to ensure our products perform to the highest standards

If the product does not perform as described on this datasheet, we will offer a refund or replacement. For full details of the Abpromise, please visit <https://www.abcam.cn/abpromise> or contact our technical team.

### **Terms and conditions**

---

- Guarantee only valid for products bought direct from Abcam or one of our authorized distributors