

Anti-Cannabinoid Receptor II antibody ab3561

★★★★★ [18 Abreviews](#) [77 References](#) [4 图像](#)

概述

产品名称	Anti-Cannabinoid Receptor II抗体
描述	兔多克隆抗体to Cannabinoid Receptor II
宿主	Rabbit
特异性	We have had mixed results for use of this antibody in mouse. Thus, we are removing mouse as a guaranteed application and welcome any feedback from customers who have used this antibody in mouse.
经测试应用	适用于: ICC, WB, IHC-P
种属反应性	与反应: Rat, Human, Recombinant fragment
免疫原	Recombinant fragment within Rat Cannabinoid Receptor II aa 1-100 (N terminal). The exact immunogen sequence used to generate this antibody is proprietary information. If additional detail on the immunogen is needed to determine the suitability of the antibody for your needs, please contact our Scientific Support team to discuss your requirements. Database link: Q9QZN9
阳性对照	WB: HT29, C6, rat colon cell lysate; IHC: human tonsil tissue, skin tissue; ICC: AtT20 cells transfected with rat CB2 gene
常规说明	<p>The Life Science industry has been in the grips of a reproducibility crisis for a number of years. Abcam is leading the way in addressing this with our range of recombinant monoclonal antibodies and knockout edited cell lines for gold-standard validation. Please check that this product meets your needs before purchasing.</p> <p>If you have any questions, special requirements or concerns, please send us an inquiry and/or contact our Support team ahead of purchase. Recommended alternatives for this product can be found below, along with publications, customer reviews and Q&As</p>

性能

形式	Liquid
存放说明	Shipped at 4°C. Store at +4°C short term (1-2 weeks). Upon delivery aliquot. Store at -20°C or -80°C. Avoid freeze / thaw cycle.
存储溶液	Preservative: 0.05% Sodium azide Constituents: 50% Glycerol, 0.1% BSA, 49% PBS
纯度	Immunogen affinity purified

Primary antibody说明	Cannabinoids exert their well known physiological effects through two G protein coupled receptors, cannabinoid receptor 1 (CB1) and CB2. Both cannabinoid receptors have been shown to inhibit adenylyl cyclase as well as stimulate the mitogen-activated protein kinase, MAPK. CB1 receptors also modulate ion channels through direct G-protein interactions. Delta 9-tetrahydrocannabinol and related ligands likely exert their psychoactive effects by inhibiting presynaptic N- and P / Q type calcium channels. CB2 is thought to function primarily in the immune system although it has been suggested to be present in the central nervous system, including the retina.
克隆	多克隆
同种型	IgG

应用

The Abpromise guarantee **Abpromise™**承诺保证使用ab3561于以下的经测试应用

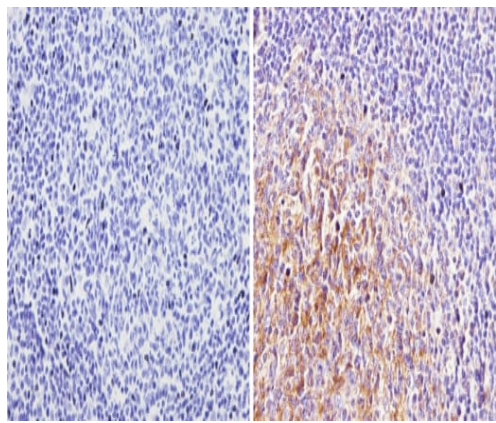
“应用说明”部分 下显示的仅为推荐的起始稀释度;实际最佳的稀释度/浓度应由使用者检定。

应用	Ab评论	说明
ICC		1/500.
WB	★★★★★ (4)	1/50 - 1/500. Predicted molecular weight: 40 kDa.
IHC-P	★★★★★ (2)	1/10 - 1/100.

靶标

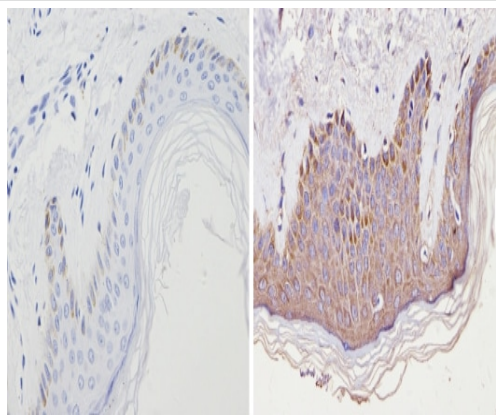
功能	Heterotrimeric G protein-coupled receptor for endocannabinoid 2-arachidonoylglycerol mediating inhibition of adenylate cyclase. May function in inflammatory response, nociceptive transmission and bone homeostasis.
组织特异性	Preferentially expressed in cells of the immune system with higher expression in B cells and NK cells (at protein level). Expressed in skin in suprabasal layers and hair follicles (at protein level). Highly expressed in tonsil and to a lower extent in spleen, peripheral blood mononuclear cells, and thymus. PubMed:14657172 could not detect expression in normal brain. Expressed in brain by perivascular microglial cells and dorsal root ganglion sensory neurons (at protein level).
序列相似性	Belongs to the G-protein coupled receptor 1 family.
翻译后修饰	Constitutively phosphorylated on Ser-352; phosphorylation increases cell internalization and desensitizes the receptor.
细胞定位	Cell membrane. Cell projection > dendrite. Perikaryon. Localizes to apical dendrite of pyramidal neurons.

图片



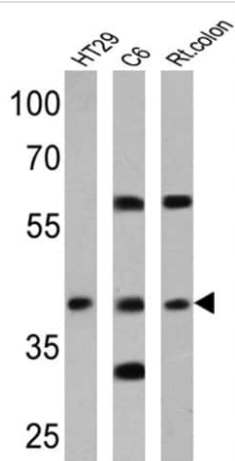
Immunohistochemistry (Formalin/PFA-fixed paraffin-embedded sections) - Anti-Cannabinoid Receptor II antibody (ab3561)

ab3561 labelling Cannabinoid Receptor II in the cytoplasm of Human tonsil tissue (right) compared with a negative control (left) by Immunohistochemistry (Formalin/PFA-fixed paraffin-embedded sections). To expose target proteins, antigen retrieval method was performed using 10mM sodium citrate (pH 6.0) microwaved for 8-15 min. Tissues were blocked in 3% H₂O₂-methanol for 15 min at room temperature. Tissue sections were incubated with the primary antibody (1:20 in 3% BSA-PBS) overnight at 4°C. A **anti-rabbit HRP** was used as the secondary antibody followed by colorimetric detection using a DAB kit. Tissues were counterstained with hematoxylin and dehydrated with ethanol and xylene to prep for mounting.



Immunohistochemistry (Formalin/PFA-fixed paraffin-embedded sections) - Anti-Cannabinoid Receptor II antibody (ab3561)

ab3561 labelling Cannabinoid Receptor II in the cytoplasm of Human skin tissue (right) compared with a negative control (left) by Immunohistochemistry (Formalin/PFA-fixed paraffin-embedded sections). To expose target proteins, antigen retrieval method was performed using 10mM sodium citrate (pH 6.0) microwaved for 8-15 min. Tissues were blocked in 3% H₂O₂-methanol for 15 min at room temperature. Tissue sections were incubated with the primary antibody (1:20 in 3% BSA-PBS) overnight at 4°C. A **anti-rabbit HRP** was used as the secondary antibody followed by colorimetric detection using a DAB kit. Tissues were counterstained with hematoxylin and dehydrated with ethanol and xylene to prep for mounting.



Western blot - Anti-Cannabinoid Receptor II antibody (ab3561)

All lanes : Anti-Cannabinoid Receptor II antibody (ab3561) at 1/200 dilution

Lane 1 : HT29 cell lysate

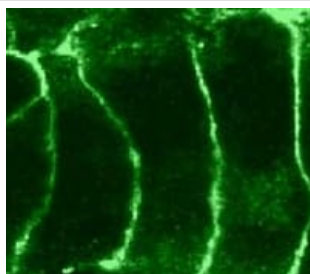
Lane 2 : C6 cell lysate

Lane 3 : Rat colon cell lysate

Lysates/proteins at 25 µg per lane.

Predicted band size: 40 kDa

Observed band size: 40 kDa



Immunocytochemistry - Anti-Cannabinoid Receptor II antibody (ab3561)

Immunocytochemistry/immunofluorescence analysis of AtT20 cells transfected with the rat CB2 gene labeling Cannabinoid Receptor II with ab3561.

Please note: All products are "FOR RESEARCH USE ONLY. NOT FOR USE IN DIAGNOSTIC PROCEDURES"

Our Abpromise to you: Quality guaranteed and expert technical support

- Replacement or refund for products not performing as stated on the datasheet
- Valid for 12 months from date of delivery
- Response to your inquiry within 24 hours
- We provide support in Chinese, English, French, German, Japanese and Spanish
- Extensive multi-media technical resources to help you
- We investigate all quality concerns to ensure our products perform to the highest standards

If the product does not perform as described on this datasheet, we will offer a refund or replacement. For full details of the Abpromise, please visit <https://www.abcam.cn/abpromise> or contact our technical team.

Terms and conditions

- Guarantee only valid for products bought direct from Abcam or one of our authorized distributors