


Anti-Calmodulin 1/2/3 (phospho T79 + S81) antibody ab61001

4 References **3 图像**

概述

产品名称	Anti-Calmodulin 1/2/3 (phospho T79 + S81)抗体
描述	兔多克隆抗体to Calmodulin 1/2/3 (phospho T79 + S81)
宿主	Rabbit
特异性	Detects endogenous levels of Calmodulin only when phosphorylated at threonine 79 and serine 81.
经测试应用	适用于: ICC/IF, WB, IHC-P
种属反应性	与反应: Human 预测可用于: Mouse, Rat 
免疫原	Synthetic peptide corresponding to Human Calmodulin 1/2/3 (phospho T79 + S81). The antiserum was produced against synthesized phosphopeptide derived from human Calmodulin around the phosphorylation site of threonine 79 and serine 81 (K-D-T(p)-D-S(p)-E-E) Database link: <u>P0DP23</u>
阳性对照	IHC-P: human brain tissue. WB: extracts from Jurkat cells.
常规说明	<p>The Life Science industry has been in the grips of a reproducibility crisis for a number of years. Abcam is leading the way in addressing this with our range of recombinant monoclonal antibodies and knockout edited cell lines for gold-standard validation. Please check that this product meets your needs before purchasing.</p> <p>If you have any questions, special requirements or concerns, please send us an inquiry and/or contact our Support team ahead of purchase. Recommended alternatives for this product can be found below, along with publications, customer reviews and Q&As</p>

性能

形式	Liquid
存放说明	Shipped at 4°C. Store at +4°C short term (1-2 weeks). Upon delivery aliquot. Store at -20°C long term. Avoid freeze / thaw cycle.
存储溶液	pH: 7.40 Preservative: 0.02% Sodium azide Constituents: PBS, 50% Glycerol (glycerin, glycerine), 0.87% Sodium chloride Without Mg2+ and Ca2+

纯度	Immunogen affinity purified
纯化说明	Affinity purified from rabbit antiserum by affinity-chromatography using epitope-specific phosphopeptide. The antibody against non-phosphopeptide was removed by chromatography using non-phosphopeptide corresponding to the phosphorylation site.
克隆	多克隆
同种型	IgG

应用

The Abpromise guarantee **Abpromise™**承诺保证使用ab61001于以下的经测试应用

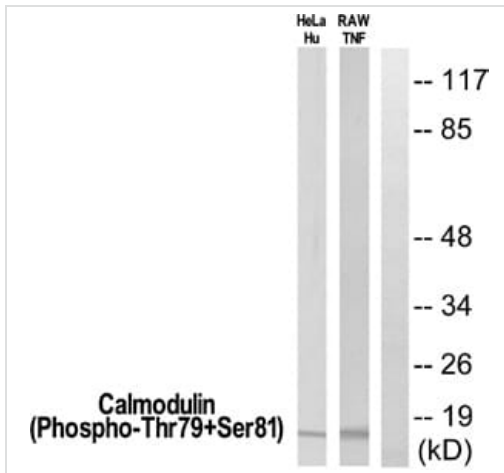
“应用说明”部分 下显示的仅为推荐的起始稀释度;实际最佳的稀释度/浓度应由使用者检定。

应用	Ab评论	说明
ICC/IF		1/100 - 1/500.
WB		1/500 - 1/1000. Detects a band of approximately 17 kDa (predicted molecular weight: 17 kDa).
IHC-P		1/50 - 1/100.

靶标

相关性	Function: Calmodulin mediates the control of a large number of enzymes and other proteins by Ca(2+). Among the enzymes to be stimulated by the calmodulin-Ca(2+) complex are a number of protein kinases and phosphatases. Together with CEP110 and centrin, is involved in a genetic pathway that regulates the centrosome cycle and progression through cytokinesis.
细胞定位	Cytoplasm > cytoskeleton > spindle. Cytoplasm > cytoskeleton > spindle pole. Distributed throughout the cell during interphase, but during mitosis becomes dramatically localized to the spindle poles and the spindle microtubules.
形式	There are three genes which encode an identical calcium binding protein which is one of the four subunits of phosphorylase kinase.

图片



Western blot - Anti-Calmodulin 1/2/3 (phospho T79 + S81) antibody (ab61001)

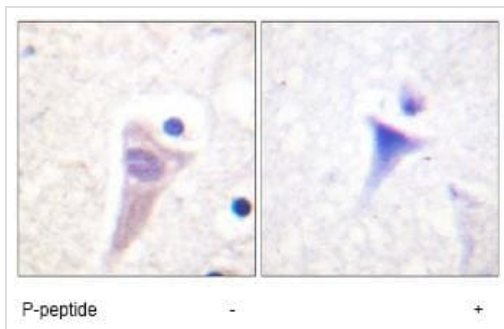
All lanes : Anti-Calmodulin 1/2/3 (phospho T79 + S81) antibody (ab61001) at 1/500 dilution

Lane 1 : HeLa cells treated with Hu (1mg/ml)

Lane 2 : Raw264.7 cells treated with TNF α (1mg/ml)

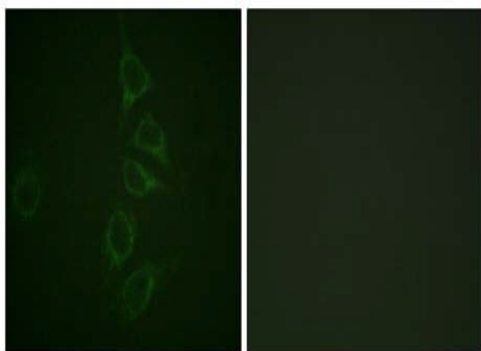
Lysates/proteins at 15 μ l per lane.

Predicted band size: 17 kDa



Immunohistochemistry (Formalin/PFA-fixed paraffin-embedded sections) - Anti-Calmodulin 1/2/3 (phospho T79 + S81) antibody (ab61001)

ab61001, at a 1/50 dilution, staining bi-phosphorylated Calmodulin on human brain tissue sections, in the presence (right) or absence (left) of the immunizing phosphopeptide.



Immunocytochemistry/ Immunofluorescence - Anti-Calmodulin 1/2/3 (phospho T79 + S81) antibody (ab61001)

Immunofluorescence analysis of HepG2 cells labeling Calmodulin (Phospho-Thr79+Ser81) with ab61001 at 1/100 dilution. The panel on the left is without the blocking peptide, while the panel on the right includes the blocking peptide.

Please note: All products are "FOR RESEARCH USE ONLY. NOT FOR USE IN DIAGNOSTIC PROCEDURES"

Our Abpromise to you: Quality guaranteed and expert technical support

- Replacement or refund for products not performing as stated on the datasheet
- Valid for 12 months from date of delivery
- Response to your inquiry within 24 hours
- We provide support in Chinese, English, French, German, Japanese and Spanish
- Extensive multi-media technical resources to help you
- We investigate all quality concerns to ensure our products perform to the highest standards

If the product does not perform as described on this datasheet, we will offer a refund or replacement. For full details of the Abpromise, please visit <https://www.abcam.cn/abpromise> or contact our technical team.

Terms and conditions

- Guarantee only valid for products bought direct from Abcam or one of our authorized distributors