

Anti-Calcineurin A antibody ab3673

★★★★★ 5 Abreviews 21 References 4 图像

概述	
产品名称	Anti-Calcineurin A抗体
描述	兔多克隆抗体to Calcineurin A
宿主	Rabbit
经测试应用	适用于: WB
种属反应性	与反应: Mouse, Rat, Human, Recombinant fragment
免疫原	Recombinant full length protein corresponding to Human Calcineurin A.
常规说明	<p>The Life Science industry has been in the grips of a reproducibility crisis for a number of years. Abcam is leading the way in addressing this with our range of recombinant monoclonal antibodies and knockout edited cell lines for gold-standard validation. Please check that this product meets your needs before purchasing.</p> <p>If you have any questions, special requirements or concerns, please send us an inquiry and/or contact our Support team ahead of purchase. Recommended alternatives for this product can be found below, along with publications, customer reviews and Q&As</p>

性能	
形式	Liquid
存放说明	Shipped at 4°C. Store at +4°C short term (1-2 weeks). Upon delivery aliquot. Store at -20°C or -80°C. Avoid freeze / thaw cycle.
存储溶液	Preservative: 0.01% Sodium azide
纯度	Whole antiserum
克隆	多克隆
同种型	IgG

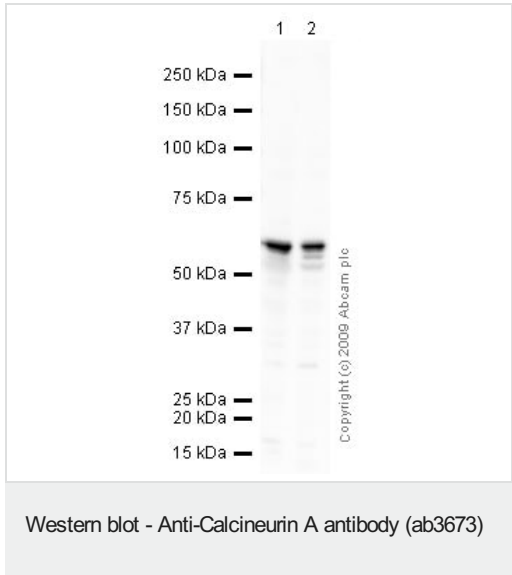
应用	
The Abpromise guarantee	Abpromise™承诺保证使用ab3673于以下的经测试应用
“应用说明”部分 下显示的仅为推荐的起始稀释度;实际最佳的稀释度/浓度应由使用者检定。	

应用	Ab评论	说明
WB	★★★★★ (3)	1/2000 - 1/5000. Detects a band of approximately 62 kDa.

靶标

功能	Calcium-dependent, calmodulin-stimulated protein phosphatase. This subunit may have a role in the calmodulin activation of calcineurin. Dephosphorylates DNM1L, HSPB1 and SSH1.
序列相似性	Belongs to the PPP phosphatase family. PP-2B subfamily.
细胞定位	Nucleus. Colocalizes with ACTN1 and MYOZ2 at the Z line in heart and skeletal muscle.

图片



All lanes : Anti-Calcineurin A antibody (ab3673) at 1/200 dilution

Lane 1 : Mouse brain tissue lysate

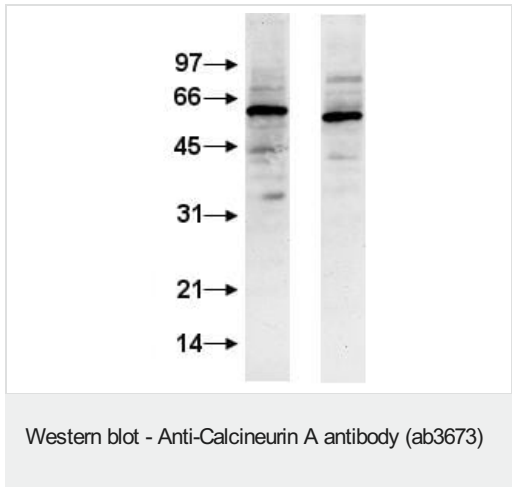
Lane 2 : Rat brain tissue lysate

Lysates/proteins at 10 µg per lane.

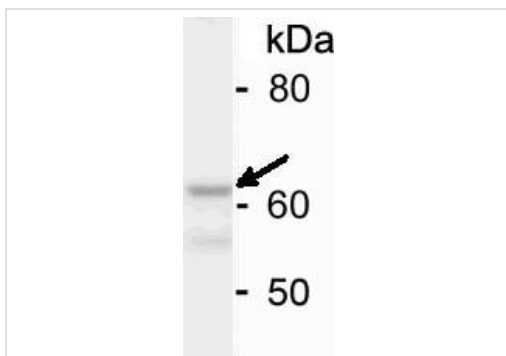
Secondary

All lanes : Goat polyclonal to Rabbit IgG - H&L - Pre-Adsorbed (HRP) at 1/3000 dilution

Observed band size: 62 kDa



Western Blot of wild type mouse brain tissue homogenate with ab3673 used at 1/6000. Please note that this image was assembled from two different blots. (The numbers on the scale correspond to kD).



Western blot - Anti-Calceineurin A antibody (ab3673)

This image is a courtesy of Anonymous Abreview

Anti-Calceineurin A antibody (ab3673) at 1/1000 dilution + Huh7
(Human hepatocellular carcinoma) whole cell lysate at 15000 cells

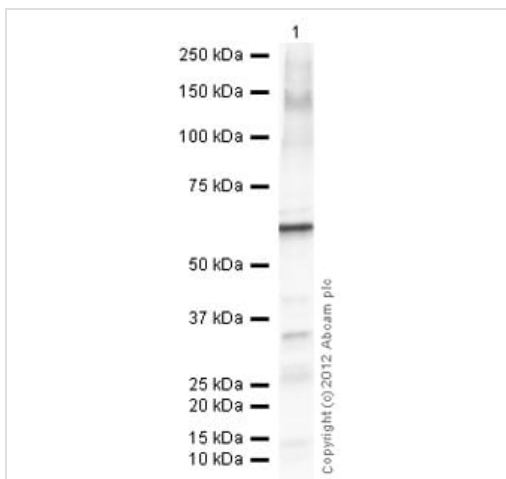
Secondary

HRP conjugated sheep polyclonal to rabbit IgG at 1/15000 dilution

Performed under reducing conditions.

Observed band size: 62 kDa

Exposure time: 1 minute



Western blot - Anti-Calceineurin A antibody (ab3673)

Anti-Calceineurin A antibody (ab3673) at 1/1000 dilution +
Recombinant Human Calcineurin A protein ([ab101870](#)) at 0.1 µg

Secondary

Goat Anti-Rabbit IgG H&L (HRP) preadsorbed ([ab97080](#)) at
1/5000 dilution

Developed using the ECL technique.

Performed under reducing conditions.

Exposure time: 10 seconds

Please note: All products are "FOR RESEARCH USE ONLY. NOT FOR USE IN DIAGNOSTIC PROCEDURES"

Our Abpromise to you: Quality guaranteed and expert technical support

- Replacement or refund for products not performing as stated on the datasheet
- Valid for 12 months from date of delivery
- Response to your inquiry within 24 hours
- We provide support in Chinese, English, French, German, Japanese and Spanish
- Extensive multi-media technical resources to help you
- We investigate all quality concerns to ensure our products perform to the highest standards

If the product does not perform as described on this datasheet, we will offer a refund or replacement. For full details of the Abpromise, please visit <https://www.abcam.cn/abpromise> or contact our technical team.

Terms and conditions

- Guarantee only valid for products bought direct from Abcam or one of our authorized distributors