

Anti-CAD antibody [EP710Y] ab40800

重组 RabMAb

9 References **8 图像**

概述

| | |
|-------|--|
| 产品名称 | Anti-CAD抗体[EP710Y] |
| 描述 | 兔单克隆抗体[EP710Y] to CAD |
| 宿主 | Rabbit |
| 特异性 | ab40800 is specific to the N-terminus of CAD. |
| 经测试应用 | 适用于: Flow Cyt (Intra), ICC/IF, WB, IP |
| 种属反应性 | 与反应: Human |
| 免疫原 | Synthetic peptide. This information is proprietary to Abcam and/or its suppliers. |
| 阳性对照 | WB: HeLa and HEK293 cell lysate. ICC/IF: HeLa cells. Flow Cyt (intra): HeLa cells. IP: HeLa whole cell lysate (ab150035). |
| 常规说明 | <p>This product is a recombinant monoclonal antibody, which offers several advantages including:</p> <ul style="list-style-type: none"> - High batch-to-batch consistency and reproducibility - Improved sensitivity and specificity - Long-term security of supply - Animal-free production <p>For more information see here.</p> <p>Our RabMAb[®] technology is a patented hybridoma-based technology for making rabbit monoclonal antibodies. For details on our patents, please refer to RabMAb[®] patents.</p> <p>Mouse, Rat: We have preliminary internal testing data to indicate this antibody may not react with these species. Please contact us for more information.</p> |

性能

| | |
|------|---|
| 形式 | Liquid |
| 存放说明 | Shipped at 4°C. Store at +4°C short term (1-2 weeks). Upon delivery aliquot. Store at -20°C. Avoid freeze / thaw cycle. |
| 存储溶液 | <p>pH: 7.20</p> <p>Preservative: 0.01% Sodium azide</p> <p>Constituents: 40% Glycerol (glycerin, glycerine), 0.05% BSA, 59% PBS</p> |
| 纯度 | Protein A purified |

| | |
|------|--------|
| 克隆 | 单克隆 |
| 克隆编号 | EP710Y |
| 同种型 | IgG |

应用

The Abpromise guarantee **Abpromise™**承诺保证使用ab40800于以下的经测试应用

“应用说明”部分 下显示的仅为推荐的起始稀释度;实际最佳的稀释度/浓度应由使用者检定。

| 应用 | Ab评论 | 说明 |
|------------------|------|--|
| Flow Cyt (Intra) | | 1/120. |
| ICC/IF | | 1/100 - 1/300. |
| WB | | 1/1000. Predicted molecular weight: 243 kDa. |
| IP | | 1/30 - 1/50. |

靶标

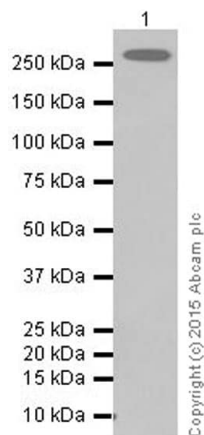
相关性

Carbamoyl phosphate synthetase-aspartate carbamoyltransferase-dihydroorotase (CAD) is a multifunctional protein that initiates and regulates mammalian de novo pyrimidine biosynthesis. This trifunctional protein which is associated with the enzymatic activities of the first 3 enzymes in the 6-step pathway of pyrimidine biosynthesis is the rate-limiting step in the de novo pyrimidine synthetic pathway. Although most of the CAD protein in the cell is cytosolic, phosphorylation at threonine 456 localizes the protein to the nucleus. While MAPK and EGF phosphorylate CAD at threonine 456, MAPK and c-myc have been found to induce over-expression of CAD.

细胞定位

Cytoplasmic and Nuclear

图片



Western blot - Anti-CAD antibody [EP710Y]
(ab40800)

Anti-CAD antibody [EP710Y] (ab40800) at 1/2000 dilution (purified)
+ HeLa cell lysate at 10 µg

Secondary

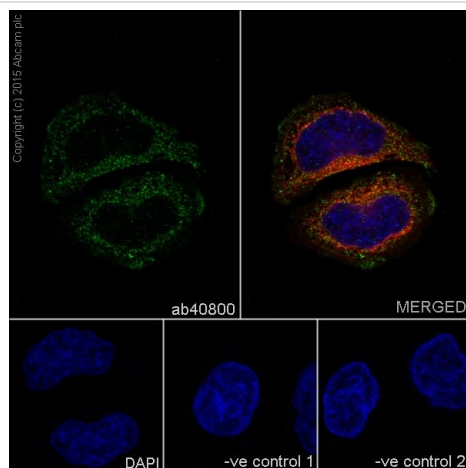
HRP goat anti-rabbit IgG (H+L) at 1/20000 dilution

Predicted band size: 243 kDa

Observed band size: 250 kDa

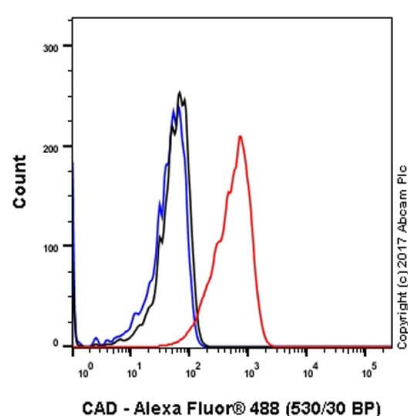
Blocking buffer: 5% NFDm/TBST

Dilution buffer: 5% NFDm/TBST



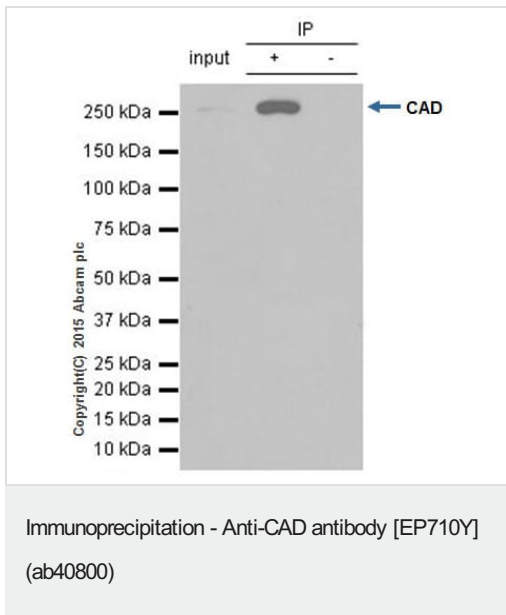
Immunocytochemistry/ Immunofluorescence - Anti-CAD antibody [EP710Y] (ab40800)

Immunofluorescence staining of HeLa cells with purified ab40800 at a working dilution of 1/300, counter-stained with DAPI. The secondary antibody was Alexa Fluor® 488 goat anti-rabbit (**ab150077**), used at a dilution of 1/1000. **ab7291**, a mouse anti-tubulin antibody (1/1000), was used to stain tubulin along with **ab150120** (Alexa Fluor® 594 goat anti-mouse, 1/1000), shown in the top right hand panel. The cells were fixed in 4% PFA and permeabilized using 0.1% Triton X 100. The negative controls are shown in bottom middle and right hand panels - for negative control 1, purified ab40800 was used at a dilution of 1/500 followed by an Alexa Fluor® 594 goat anti-mouse antibody (**ab150120**) at a dilution of 1/500. For negative control 2, **ab7291** (mouse anti-tubulin) was used at a dilution of 1/500 followed by an Alexa Fluor® 488 goat anti-rabbit antibody (**ab150077**) at a dilution of 1/400.

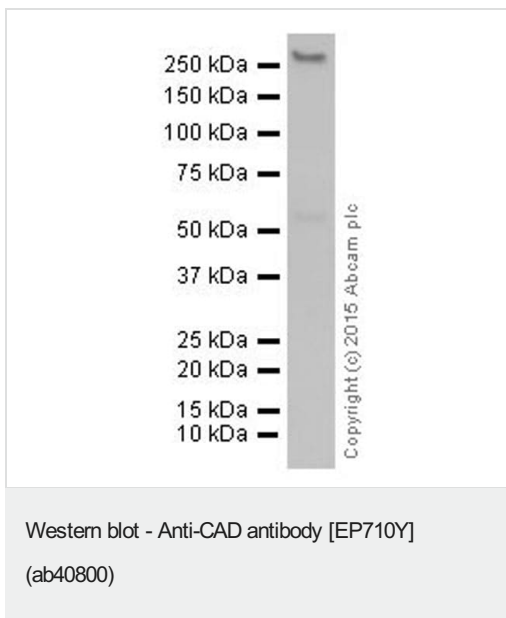


Flow Cytometry (Intracellular) - Anti-CAD antibody
[EP710Y] (ab40800)

Intracellular Flow Cytometry analysis of HeLa (human cervix adenocarcinoma) cells labeling CAD (red) with ab40800 at a 1/120 dilution. Cells were fixed with 4% paraformaldehyde and permeabilized with 90% methanol. A goat anti-rabbit IgG (Alexa Fluor® 488) (**ab150077**) was used as the secondary antibody at a 1/2000 dilution. Black - Rabbit monoclonal IgG (**ab172730**). Blue (unlabeled control) - Cells without incubation with the primary and secondary antibodies.



ab40800 (purified) at 1/30 immunoprecipitating CAD in 10 µg HeLa (Lanes 1 and 2, observed at 250 kDa). Lane 3 - PBS. For western blotting, HRP Veriblot for IP (**ab131366**) was used for detection (1/10 000). Blocking buffer and concentration: 5% NFDM/TBST Dilution buffer and concentration: 5% NFDM/TBST



Anti-CAD antibody [EP710Y] (ab40800) at 1/1000 dilution (purified)
+ HeLa cell lysate at 1/20000 dilution

Secondary

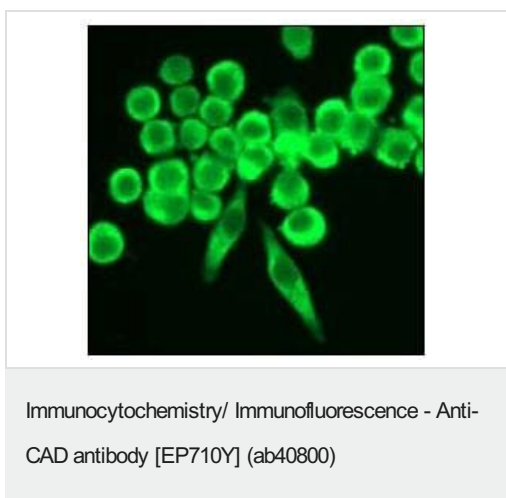
HRP goat anti-rabbit IgG (H+L) at 1/20000 dilution

Predicted band size: 243 kDa

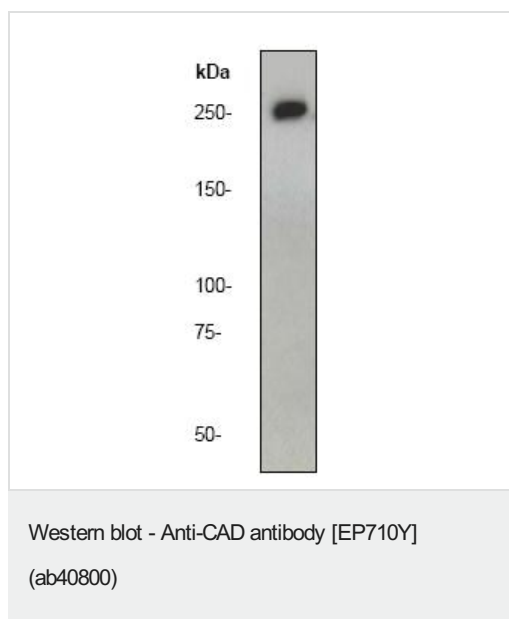
Observed band size: 250 kDa

Blocking buffer: 5% NFDM/TBST

Dilution buffer: 5% NFDM/TBST



Unpurified ab40800 (1/100), staining human CAD (N-term) in HeLa cells by Immunofluorescence.







Anti-CAD antibody [EP710Y] (ab40800) at 1/1000 dilution (unpurified) + HEK-293 whole cell lysate ([ab7902](#)) at 10 µg

Predicted band size: 243 kDa

Observed band size: 250 kDa

Why choose a recombinant antibody?

| | |
|---|---|
|  <p>Research with confidence Consistent and reproducible results</p> |  <p>Long-term and scalable supply Recombinant technology</p> |
|  <p>Success from the first experiment Confirmed specificity</p> |  <p>Ethical standards compliant Animal-free production</p> |

Anti-CAD antibody [EP710Y] (ab40800)

Please note: All products are "FOR RESEARCH USE ONLY. NOT FOR USE IN DIAGNOSTIC PROCEDURES"

Our Abpromise to you: Quality guaranteed and expert technical support

- Replacement or refund for products not performing as stated on the datasheet
- Valid for 12 months from date of delivery
- Response to your inquiry within 24 hours
- We provide support in Chinese, English, French, German, Japanese and Spanish
- Extensive multi-media technical resources to help you
- We investigate all quality concerns to ensure our products perform to the highest standards

If the product does not perform as described on this datasheet, we will offer a refund or replacement. For full details of the Abpromise, please visit <https://www.abcam.cn/abpromise> or contact our technical team.

Terms and conditions

- Guarantee only valid for products bought direct from Abcam or one of our authorized distributors