


Anti-CABLES1 antibody ab75535

[3 References](#) [3 图像](#)

概述

产品名称	Anti-CABLES1抗体
描述	兔多克隆抗体to CABLES1
宿主	Rabbit
特异性	From Jan 2024, QC testing of replenishment batches of this polyclonal changed. All tested and expected application and reactive species combinations are still covered by our Abcam product promise. However, we no longer test all applications. For more information on a specific batch, please contact our Scientific Support who will be happy to help.
经测试应用	适用于: ICC/IF, WB, IHC-P
种属反应性	与反应: Human 预测可用于: Mouse, Zebrafish 
免疫原	Synthetic peptide corresponding to Human CABLES1 aa 600 to the C-terminus (C terminal) conjugated to keyhole limpet haemocyanin. (Peptide available as ab87824)
阳性对照	This antibody gave a positive signal in Human Brain and Skeletal Muscle Tissue Lysates, and in the following whole cell lysates: SHSY-5Y; SK N SH; SK N BE; HeLa.
常规说明	<p>The Life Science industry has been in the grips of a reproducibility crisis for a number of years. Abcam is leading the way in addressing this with our range of recombinant monoclonal antibodies and knockout edited cell lines for gold-standard validation. Please check that this product meets your needs before purchasing.</p> <p>If you have any questions, special requirements or concerns, please send us an inquiry and/or contact our Support team ahead of purchase. Recommended alternatives for this product can be found below, along with publications, customer reviews and Q&As</p>

性能

形式	Liquid
存放说明	Shipped at 4°C. Store at +4°C short term (1-2 weeks). Upon delivery aliquot. Store at -20°C or -80°C. Avoid freeze / thaw cycle.
存储溶液	pH: 7.40 Preservative: 0.02% Sodium azide Constituent: PBS

Batches of this product that have a concentration < 1mg/ml may have BSA added as a stabilising agent. If you would like information about the formulation of a specific lot, please contact our scientific support team who will be happy to help.

纯度 Immunogen affinity purified
克隆 多克隆
同种型 IgG

应用

The Abpromise guarantee **Abpromise™**承诺保证使用ab75535于以下的经测试应用

“应用说明”部分 下显示的仅为推荐的起始稀释度;实际最佳的稀释度/浓度应由使用者检定。

应用	Ab评论	说明
ICC/IF		Use a concentration of 1 µg/ml.
WB		Use a concentration of 1 µg/ml. Detects a band of approximately 68 kDa (predicted molecular weight: 68 kDa).
IHC-P		Use a concentration of 1 µg/ml. Perform heat mediated antigen retrieval before commencing with IHC staining protocol.

靶标

功能 Cyclin-dependent kinase binding protein. Enhances cyclin-dependent kinase tyrosine phosphorylation by nonreceptor tyrosine kinases, such as that of CDK5 by activated ABL1, which leads to increased CDK5 activity and is critical for neuronal development, and that of CDK2 by WEE1, which leads to decreased CDK2 activity and growth inhibition. Positively affects neuronal outgrowth. Plays a role as a regulator for p53/p73-induced cell death.

组织特异性 Expressed in breast, pancreas, colon, head and neck (at protein level). Strongly decreased in more than half of cases of atypical endometrial hyperplasia and in more than 90% of endometrial cancers.

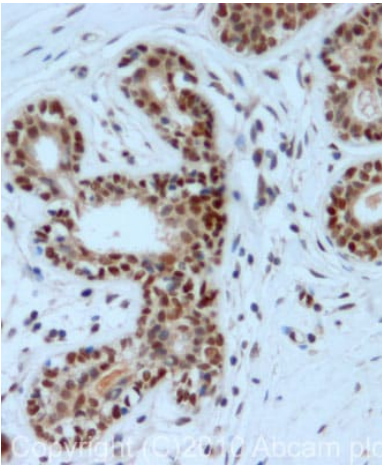
序列相似性 Belongs to the cyclin family.

发展阶段 Expression in the endometrial epithelium fluctuates during the menstrual cycle, being greater during the secretory phase when compared with the proliferative phase.

翻译后修饰 Phosphorylated on Ser-313 by CCNE1/CDK3. Phosphorylated on serine/threonine residues by CDK5 and on tyrosine residues by ABL1. Also phosphorylated in vitro by CCNA1/CDK2, CCNE1/CDK2, CCNA1/CDK3 and CCNE1/CDK3.

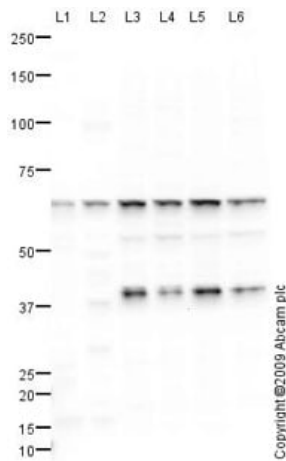
细胞定位 Nucleus. Cytoplasm. Located in the cell body and proximal region of the developing axonal shaft of immature neurons. Located in axonal growth cone, but not in the distal part of the axon shaft or in dendritic growth cone of mature neurons.

图片



Immunohistochemistry (Formalin/PFA-fixed paraffin-embedded sections) - Anti-CABLES1 antibody (ab75535)

IHC image of CABLES1 staining in Human Breast Carcinoma formalin fixed paraffin embedded tissue section, performed on a Leica Bond™ system using the standard protocol F. The section was pre-treated using heat mediated antigen retrieval with sodium citrate buffer (pH6, epitope retrieval solution 1) for 20 mins. The section was then incubated with ab75535, 1µg/ml, for 15 mins at room temperature and detected using an HRP conjugated compact polymer system. DAB was used as the chromogen. The section was then counterstained with haematoxylin and mounted with DPX.



Western blot - Anti-CABLES1 antibody (ab75535)

All lanes : Anti-CABLES1 antibody (ab75535) at 1 µg/ml

Lane 1 : Human brain tissue lysate - total protein (**ab29466**)

Lane 2 : Human skeletal muscle tissue lysate - total protein (**ab29330**)

Lane 3 : SHSY-5Y (Human neuroblastoma cell line) Whole Cell Lysate

Lane 4 : SK N SH (Human neuroblastoma) Whole Cell Lysate

Lane 5 : SK N BE (Human neuroblastoma) Whole Cell Lysate

Lane 6 : HeLa (Human epithelial carcinoma cell line) Whole Cell Lysate

Lysates/proteins at 10 µg per lane.

Secondary

All lanes : Goat polyclonal to Rabbit IgG - H&L - Pre-Adsorbed (HRP) at 1/3000 dilution

Developed using the ECL technique.

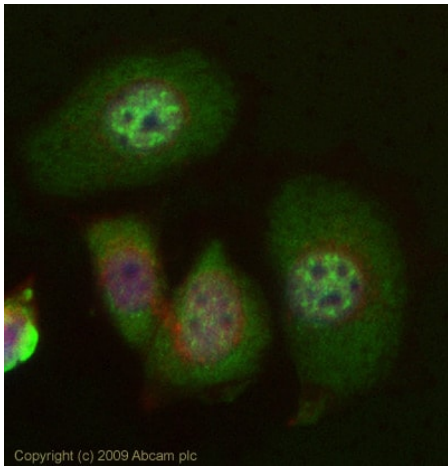
Performed under reducing conditions.

Predicted band size: 68 kDa

Observed band size: 68 kDa

Additional bands at: 42 kDa (possible isoform)

This antibody is predicted to cross react with both isoform 1 (68 kDa) and isoform 2 (42 kDa) of CABLES1. We believe that the band observed at 42 kDa corresponds to isoform 2.



Immunocytochemistry/ Immunofluorescence - Anti-CABLES1 antibody (ab75535)

ICC/IF image of ab75535 stained MCF-7 cells. The cells were 4% PFA fixed (10 min) and then incubated in 1%BSA / 10% normal Goat serum / 0.3M glycine in 0.1% PBS-Tween for 1h to permeabilise the cells and block non-specific protein-protein interactions. The cells were then incubated with the antibody (ab75535, 1µg/ml) overnight at +4°C. The secondary antibody (green) was Alexa Fluor® 488 Goat anti-Rabbit IgG (H+L) used at a 1/1000 dilution for 1h. Alexa Fluor® 594 WGA was used to label plasma membranes (red) at a 1/200 dilution for 1h. DAPI was used to stain the cell nuclei (blue) at a concentration of 1.43µM. This antibody also gave a positive result in 4% PFA fixed (10 min) HEK293, HepG2 cells at 1µg/ml

Please note: All products are "FOR RESEARCH USE ONLY. NOT FOR USE IN DIAGNOSTIC PROCEDURES"

Our Abpromise to you: Quality guaranteed and expert technical support

- Replacement or refund for products not performing as stated on the datasheet
- Valid for 12 months from date of delivery
- Response to your inquiry within 24 hours
- We provide support in Chinese, English, French, German, Japanese and Spanish
- Extensive multi-media technical resources to help you
- We investigate all quality concerns to ensure our products perform to the highest standards

If the product does not perform as described on this datasheet, we will offer a refund or replacement. For full details of the Abpromise, please visit <https://www.abcam.cn/abpromise> or contact our technical team.

Terms and conditions

- Guarantee only valid for products bought direct from Abcam or one of our authorized distributors