

Anti-C8orf55 antibody ab121743

1 [References](#) **6** [图像](#)

概述

产品名称	Anti-C8orf55抗体
描述	兔多克隆抗体to C8orf55
宿主	Rabbit
经测试应用	适用于: ICC, IHC-P, WB
种属反应性	与反应: Human
免疫原	antigen sequence, corresponding to amino acids 123-207 (LLGWDDRAFYLEARFVSLRD GFVCALLRFR QHLLGTSPER VVQHLCQRRV EPELPADLQ HWISYNEASS QLLRMESGLS DVTKDQ) of Human C8orf55. Run BLAST with Expasy Run BLAST with NCBI
阳性对照	IHC: Human cerebellum. kidney, small intestine and Fallopian tube. WB: RT-4 and U-251 MG cell lysate; Human Liver lysate. ICC/IF: Human cell line U-251MG
常规说明	<p>The Life Science industry has been in the grips of a reproducibility crisis for a number of years. Abcam is leading the way in addressing this with our range of recombinant monoclonal antibodies and knockout edited cell lines for gold-standard validation. Please check that this product meets your needs before purchasing.</p> <p>If you have any questions, special requirements or concerns, please send us an inquiry and/or contact our Support team ahead of purchase. Recommended alternatives for this product can be found below, along with publications, customer reviews and Q&As</p>

性能

形式	Liquid
存放说明	Shipped at 4°C. Upon delivery aliquot and store at -20°C. Avoid freeze / thaw cycles.
存储溶液	pH: 7.20 Preservative: 0.02% Sodium azide Constituents: 40% Glycerol (glycerin, glycerine), 59% PBS
纯度	Immunogen affinity purified
克隆	多克隆
同种型	IgG

应用

The Abpromise guarantee **Abpromise™**承诺保证使用ab121743于以下的经测试应用

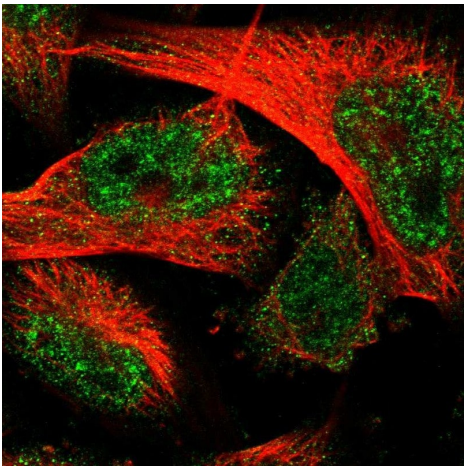
“应用说明”部分 下显示的仅为推荐的起始稀释度;实际最佳的稀释度/浓度应由使用者检定。

应用	Ab评论	说明
ICC		Use a concentration of 0.04 µg/ml.
IHC-P		1/500 - 1/1000. Perform heat mediated antigen retrieval with citrate buffer pH 6 before commencing with IHC staining protocol.
WB		Use a concentration of 0.04 - 0.4 µg/ml.

靶标

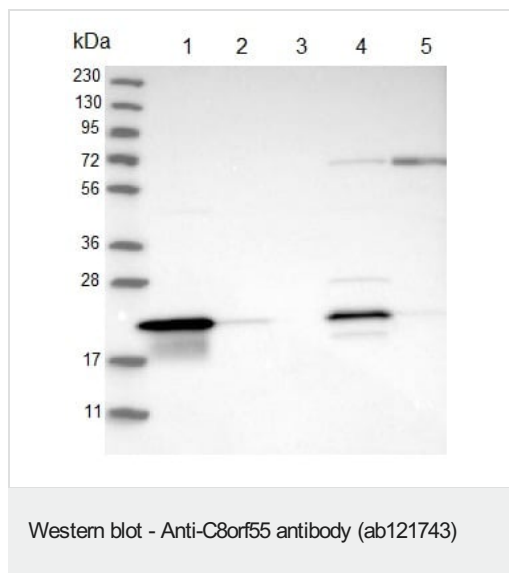
序列相似性	Belongs to the UPF0670 family.
细胞定位	Secreted.

图片



Immunocytochemistry - Anti-C8orf55 antibody (ab121743)

Immunofluorescent staining of Human cell line U-251MG shows positivity in nucleus but not nucleoli and cytoplasm. Recommended concentration of ab121743 is 0.04 µg/ml. Cells treated with PFA/Triton X-100.



All lanes : Anti-C8orf55 antibody (ab121743) at 0.04 µg/ml

Lane 1 : RT-4 lysate

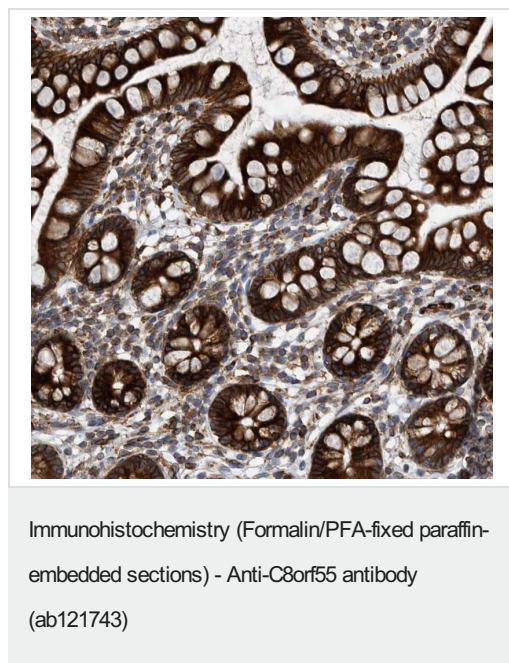
Lane 2 : U-251 MG lysate

Lane 3 : Human plasma

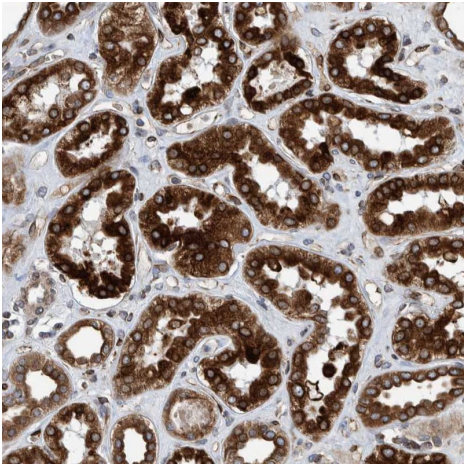
Lane 4 : Human liver lysate

Lane 5 :
Human tonsil lysate

Developed using the ECL technique.

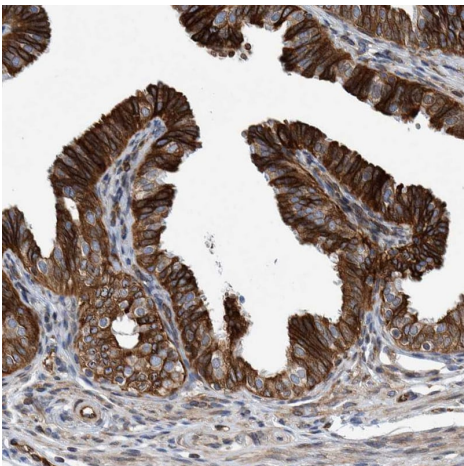


ab121743, at a 1/1000 dilution staining C8orf55 in paraffin-embedded Human small intestine tissue by Immunohistochemistry.



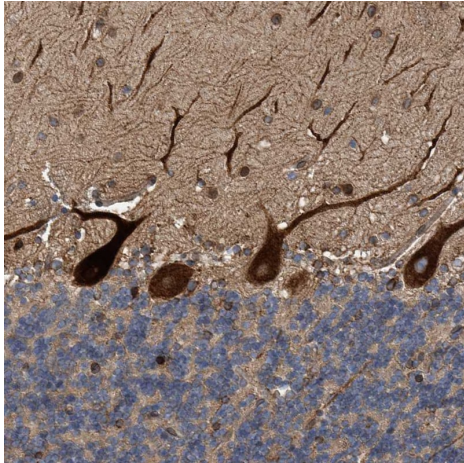
Immunohistochemistry (Formalin/PFA-fixed paraffin-embedded sections) - Anti-C8orf55 antibody (ab121743)

ab121743, at a 1/1000 dilution staining C8orf55 in paraffin-embedded Human kidney tissue by Immunohistochemistry.



Immunohistochemistry (Formalin/PFA-fixed paraffin-embedded sections) - Anti-C8orf55 antibody (ab121743)

ab121743, at a 1/1000 dilution staining C8orf55 in paraffin-embedded Human fallopian tube tissue by Immunohistochemistry.



Immunohistochemistry (Formalin/PFA-fixed paraffin-embedded sections) - Anti-C8orf55 antibody (ab121743)

ab121743, at a 1/1000 dilution staining C8orf55 in paraffin-embedded Human cerebellum tissue by Immunohistochemistry.

Please note: All products are "FOR RESEARCH USE ONLY. NOT FOR USE IN DIAGNOSTIC PROCEDURES"

Our Abpromise to you: Quality guaranteed and expert technical support

- Replacement or refund for products not performing as stated on the datasheet
- Valid for 12 months from date of delivery
- Response to your inquiry within 24 hours
- We provide support in Chinese, English, French, German, Japanese and Spanish
- Extensive multi-media technical resources to help you
- We investigate all quality concerns to ensure our products perform to the highest standards

If the product does not perform as described on this datasheet, we will offer a refund or replacement. For full details of the Abpromise, please visit <https://www.abcam.cn/abpromise> or contact our technical team.

Terms and conditions

- Guarantee only valid for products bought direct from Abcam or one of our authorized distributors