



Anti-C6orf138 antibody ab122705

4 图像

概述	
产品名称	Anti-C6orf138抗体
描述	兔多克隆抗体to C6orf138
宿主	Rabbit
经测试应用	适用于: IHC-P
种属反应性	与反应: Human
免疫原	KKRAKRKEREIEIEIENPDHVTTV , corresponding to amino acids 820-846 of Human C6orf138 (Q6ZW05)  Run BLAST with  Run BLAST with
阳性对照	IHC-P: Human cerebellum, stomach, Fallopian tube and prostate tissue.
常规说明	<p>The Life Science industry has been in the grips of a reproducibility crisis for a number of years. Abcam is leading the way in addressing this with our range of recombinant monoclonal antibodies and knockout edited cell lines for gold-standard validation. Please check that this product meets your needs before purchasing.</p> <p>If you have any questions, special requirements or concerns, please send us an inquiry and/or contact our Support team ahead of purchase. Recommended alternatives for this product can be found below, along with publications, customer reviews and Q&As</p>
性能	
形式	Liquid
存放说明	Shipped at 4°C. Upon delivery aliquot and store at -20°C. Avoid freeze / thaw cycles.
存储溶液	pH: 7.20 Preservative: 0.02% Sodium azide Constituents: 40% Glycerol (glycerin, glycerine), 59% PBS
纯度	Immunogen affinity purified
克隆	多克隆
同种型	IgG
应用	

The Abpromise guarantee **Abpromise™**承诺保证使用ab122705于以下的经测试应用

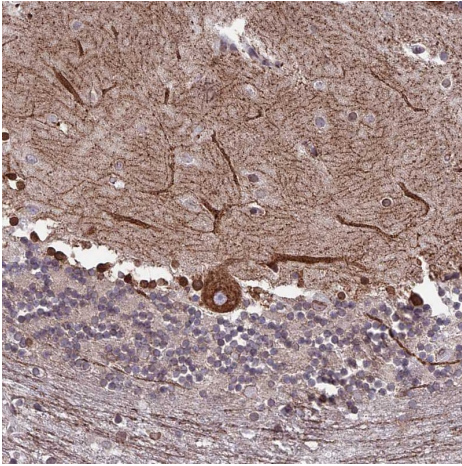
“应用说明”部分 下显示的仅为推荐的起始稀释度;实际最佳的稀释度/浓度应由使用者检定。

应用	Ab评论	说明
IHC-P		1/200 - 1/500. Perform heat mediated antigen retrieval with citrate buffer pH 6 before commencing with IHC staining protocol.

靶标

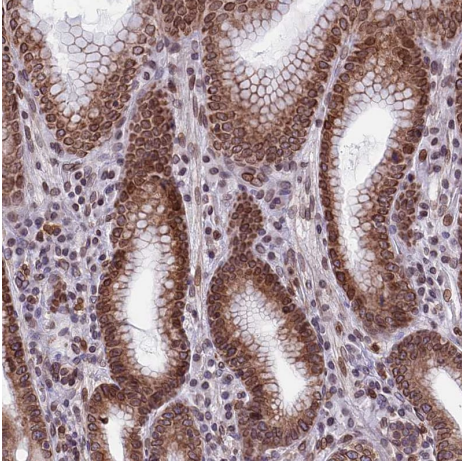
序列相似性	Belongs to the patched family. Contains 1 SSD (sterol-sensing) domain.
细胞定位	Membrane.

图片



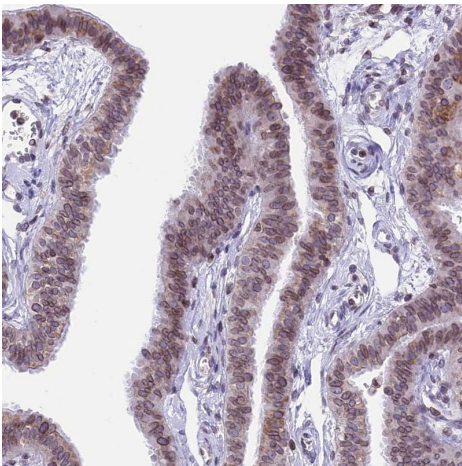
Immunohistochemistry (Formalin/PFA-fixed paraffin-embedded sections) - Anti-C6orf138 antibody (ab122705)

Immunohistochemical analysis of formalin-fixed, paraffin-embedded human cerebellum tissue, labeling C6orf138 with ab122705 at 1/500.



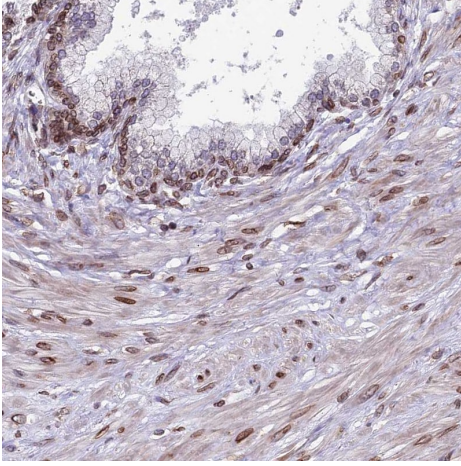
Immunohistochemistry (Formalin/PFA-fixed paraffin-embedded sections) - Anti-C6orf138 antibody (ab122705)

Immunohistochemical analysis of formalin-fixed, paraffin-embedded human stomach tissue, labeling C6orf138 with ab122705 at 1/500.



Immunohistochemistry (Formalin/PFA-fixed paraffin-embedded sections) - Anti-C6orf138 antibody (ab122705)

Immunohistochemical analysis of formalin-fixed, paraffin-embedded human Fallopian tube tissue, labeling C6orf138 with ab122705 at 1/500.



Immunohistochemical analysis of formalin-fixed, paraffin-embedded human prostate tissue, labeling C6orf138 with ab122705 at 1/500.

Immunohistochemistry (Formalin/PFA-fixed paraffin-embedded sections) - Anti-C6orf138 antibody (ab122705)

Please note: All products are "FOR RESEARCH USE ONLY. NOT FOR USE IN DIAGNOSTIC PROCEDURES"

Our Abpromise to you: Quality guaranteed and expert technical support

- Replacement or refund for products not performing as stated on the datasheet
- Valid for 12 months from date of delivery
- Response to your inquiry within 24 hours
- We provide support in Chinese, English, French, German, Japanese and Spanish
- Extensive multi-media technical resources to help you
- We investigate all quality concerns to ensure our products perform to the highest standards

If the product does not perform as described on this datasheet, we will offer a refund or replacement. For full details of the Abpromise, please visit <https://www.abcam.cn/abpromise> or contact our technical team.

Terms and conditions

- Guarantee only valid for products bought direct from Abcam or one of our authorized distributors