

### Anti-C5b-9 antibody ab55811

★★★★☆ [4 Abreviews](#) [72 References](#) [2 图像](#)

#### 概述

<b>产品名称</b>	Anti-C5b-9抗体
<b>描述</b>	兔多克隆抗体to C5b-9
<b>宿主</b>	Rabbit
<b>特异性</b>	This antibody is monospecific for C5b-9 complex in purified form or present in cobra venom factor activated human serum. There is no reactivity vs. non-activated normal human serum or plasma
<b>经测试应用</b>	<b>适用于:</b> IHC-P, ICC/IF
<b>种属反应性</b>	<b>与反应:</b> Human
<b>免疫原</b>	Full length native protein (purified) corresponding to Human C5b-9. Purified human SC5b-9 complex.
<b>常规说明</b>	<p>The Life Science industry has been in the grips of a reproducibility crisis for a number of years. Abcam is leading the way in addressing this with our range of recombinant monoclonal antibodies and knockout edited cell lines for gold-standard validation. Please check that this product meets your needs before purchasing.</p> <p>If you have any questions, special requirements or concerns, please send us an inquiry and/or contact our Support team ahead of purchase. Recommended alternatives for this product can be found below, along with publications, customer reviews and Q&amp;As</p>

#### 性能

<b>形式</b>	Liquid
<b>存放说明</b>	Shipped at 4°C. Store at +4°C short term (1-2 weeks). Upon delivery aliquot. Store at -20°C or -80°C. Avoid freeze / thaw cycle.
<b>存储溶液</b>	pH: 7.20 Preservative: 0.1% Sodium azide Constituent: 99.9% PBS
<b>纯度</b>	Protein A purified
<b>纯化说明</b>	This antibody is provided as IgG fraction. Please note that the concentration value refers to the fraction.
<b>克隆</b>	多克隆
<b>同种型</b>	IgG

## 应用

**The Abpromise guarantee**      **Abpromise™**承诺保证使用ab55811于以下的经测试应用

“应用说明”部分 下显示的仅为推荐的起始稀释度;实际最佳的稀释度/浓度应由使用者检定。

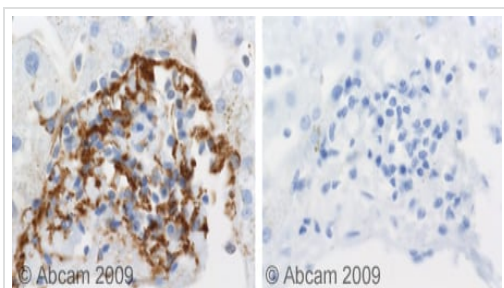
应用	Ab评论	说明
IHC-P	★★★★★ (1)	Use at an assay dependent concentration. Perform heat mediated antigen retrieval via the pressure cooker method before commencing with IHC staining protocol.
ICC/IF	★★★★★ (2)	Use at an assay dependent concentration.

## 靶标

**相关性**      Activation of the complement system plays a key role in normal inflammatory response to injury but may cause substantial injury when activated inappropriately. The complement system is activated either through the classical (antibody induced) or the alternative (microbial surface, polysaccharide induced) pathway, both leading to the formation of the C5b9 complex. Fluid phase binding of the multifunctional glycoprotein S protein (vitronectin) to C5b9 leads to the formation of a cytolytically inactive complex, SC5b9, which is unable to attach to cells.

**细胞定位**      Secreted

## 图片

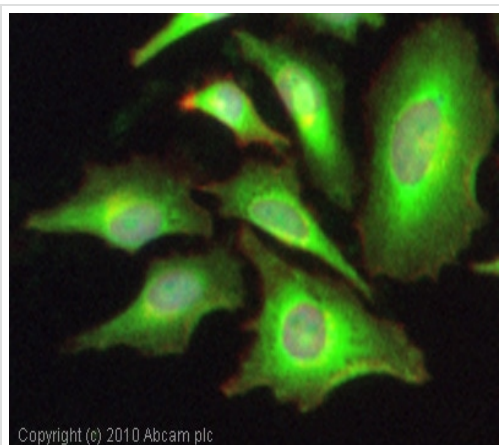


Immunohistochemistry (Formalin/PFA-fixed paraffin-embedded sections) - Anti-C5b-9 antibody (ab55811)

ab55811 staining C5b-9 in human liver.

Left panel: with primary antibody at 4 ug/ml. Right panel: isotype control.

Sections were stained using an automated system (DAKO Autostainer Plus ), at room temperature: sections were rehydrated and antigen retrieved with the Dako 3 in 1 AR buffers citrate pH6.1 in a DAKO PT link. Slides were peroxidase blocked in 3% H<sub>2</sub>O<sub>2</sub> in methanol for 10 mins. They were then blocked with Dako Protein block for 10 minutes (containing casein 0.25% in PBS) then incubated with primary antibody for 20 min and detected with Dako envision flex amplification kit for 30 minutes. Colorimetric detection was completed with Diaminobenzidine for 5 minutes. Slides were counterstained with Haematoxylin and coverslipped under DePeX. Please note that for manual staining we recommend to optimize the primary antibody concentration and incubation time (overnight incubation), and amplification may be required.



Copyright (c) 2010 Abcam plc

Immunocytochemistry/ Immunofluorescence - Anti-C5b-9 antibody (ab55811)

ICC/IF image of ab55811 stained HeLa cells. The cells were 4% formaldehyde fixed (10 min) and then incubated in 1%BSA / 10% normal goat serum / 0.3M glycine in 0.1% PBS-Tween for 1h to permeabilise the cells and block non-specific protein-protein interactions. The cells were then incubated with the antibody (ab55811, 1µg/ml) overnight at +4°C. The secondary antibody (green) was Alexa Fluor® 488 goat anti-rabbit IgG (H+L) used at a 1/1000 dilution for 1h. Alexa Fluor® 594 WGA was used to label plasma membranes (red) at a 1/200 dilution for 1h. DAPI was used to stain the cell nuclei (blue) at a concentration of 1.43µM.

**Please note:** All products are "FOR RESEARCH USE ONLY. NOT FOR USE IN DIAGNOSTIC PROCEDURES"

### Our Abpromise to you: Quality guaranteed and expert technical support

---

- Replacement or refund for products not performing as stated on the datasheet
- Valid for 12 months from date of delivery
- Response to your inquiry within 24 hours
  
- We provide support in Chinese, English, French, German, Japanese and Spanish
- Extensive multi-media technical resources to help you
- We investigate all quality concerns to ensure our products perform to the highest standards

If the product does not perform as described on this datasheet, we will offer a refund or replacement. For full details of the Abpromise, please visit <https://www.abcam.cn/abpromise> or contact our technical team.

### Terms and conditions

---

- Guarantee only valid for products bought direct from Abcam or one of our authorized distributors