

Anti-C3 antibody [EPR19394] ab200999

重组 RabMAb

★★★★★ **9 Abreviews** **47 References** **10 图像**

概述

产品名称	Anti-C3抗体[EPR19394]
描述	兔单克隆抗体[EPR19394] to C3
宿主	Rabbit
经测试应用	适用于: IHC-P, WB
种属反应性	与反应: Mouse, Rat, Human
免疫原	Synthetic peptide. This information is proprietary to Abcam and/or its suppliers.
阳性对照	WB: Human fetal liver, fetal heart and fetal kidney lysates; Mouse brain, kidney, spleen and heart lysates; Rat brain, spleen, heart and kidney lysates; Human serum, plasma and milk; HepG2 whole cell lysate; Mouse and rat plasma. IHC-P: Mouse liver, cerebral cortex and cardiac muscle tissues; Rat kidney, liver and lung tissues.
常规说明	<p>This product is a recombinant monoclonal antibody, which offers several advantages including:</p> <ul style="list-style-type: none"> - High batch-to-batch consistency and reproducibility - Improved sensitivity and specificity - Long-term security of supply - Animal-free production <p>For more information see here.</p> <p>Our RabMAb[®] technology is a patented hybridoma-based technology for making rabbit monoclonal antibodies. For details on our patents, please refer to RabMAb[®] patents.</p>

性能

形式	Liquid
存放说明	Shipped at 4°C. Store at +4°C short term (1-2 weeks). Upon delivery aliquot. Store at -20°C long term. Avoid freeze / thaw cycle.
存储溶液	<p>pH: 7.2</p> <p>Preservative: 0.01% Sodium azide</p> <p>Constituents: 59% PBS, 40% Glycerol, 0.05% BSA</p>
纯度	Protein A purified
克隆	单克隆
克隆编号	EPR19394

同种型	IgG	
应用		
The Abpromise guarantee Abpromise™ 承诺保证使用ab200999于以下的经测试应用		
“应用说明”部分 下显示的仅为推荐的起始稀释度;实际最佳的稀释度/浓度应由使用者检定。		
应用	Ab评论	说明
IHC-P	★★★★★ (4)	1/2000. Perform heat mediated antigen retrieval with Tris/EDTA buffer pH 9.0 before commencing with IHC staining protocol.
WB	★★★★★ (2)	1/2000. Detects a band of approximately 187, 115 ,68 ,43 kDa (predicted molecular weight: 187 kDa).
靶标		
功能	<p>C3 plays a central role in the activation of the complement system. Its processing by C3 convertase is the central reaction in both classical and alternative complement pathways. After activation C3b can bind covalently, via its reactive thioester, to cell surface carbohydrates or immune aggregates.</p> <p>Derived from proteolytic degradation of complement C3, C3a anaphylatoxin is a mediator of local inflammatory process. It induces the contraction of smooth muscle, increases vascular permeability and causes histamine release from mast cells and basophilic leukocytes.</p>	
组织特异性	Plasma.	
疾病相关	<p>Defects in C3 are the cause of complement component 3 deficiency (C3D) [MIM:120700]. A rare defect of the complement classical pathway. Patients develop recurrent, severe, pyogenic infections because of ineffective opsonization of pathogens. Some patients may also develop autoimmune disorders, such as arthralgia and vasculitic rashes, lupus-like syndrome and membranoproliferative glomerulonephritis.</p> <p>Genetic variation in C3 is associated with susceptibility to age-related macular degeneration type 9 (ARMD9) [MIM:611378]. ARMD is a multifactorial eye disease and the most common cause of irreversible vision loss in the developed world. In most patients, the disease is manifest as ophthalmoscopically visible yellowish accumulations of protein and lipid that lie beneath the retinal pigment epithelium and within an elastin-containing structure known as Bruch membrane.</p> <p>Defects in C3 are a cause of susceptibility to hemolytic uremic syndrome atypical type 5 (AHUS5) [MIM:612925]. An atypical form of hemolytic uremic syndrome. It is a complex genetic disease characterized by microangiopathic hemolytic anemia, thrombocytopenia, renal failure and absence of episodes of enterocolitis and diarrhea. In contrast to typical hemolytic uremic syndrome, atypical forms have a poorer prognosis, with higher death rates and frequent progression to end-stage renal disease. Note=Susceptibility to the development of atypical hemolytic uremic syndrome can be conferred by mutations in various components of or regulatory factors in the complement cascade system. Other genes may play a role in modifying the phenotype.</p>	
序列相似性	<p>Contains 1 anaphylatoxin-like domain.</p> <p>Contains 1 NTR domain.</p>	
翻译后修饰	C3b is rapidly split in two positions by factor I and a cofactor to form iC3b (inactivated C3b) and C3f which is released. Then iC3b is slowly cleaved (possibly by factor I) to form C3c (beta chain +	

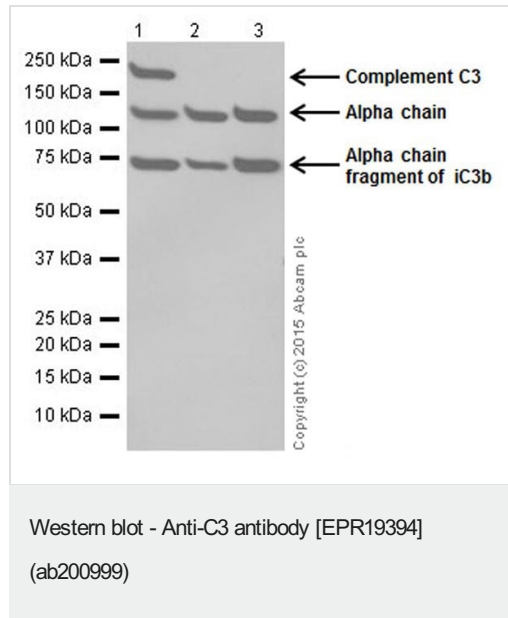
alpha' chain fragment 1 + alpha' chain fragment 2), C3dg and C3f. Other proteases produce other fragments such as C3d or C3g.

Phosphorylation sites are present in the extracellular medium.

细胞定位

Secreted.

图片



All lanes : Anti-C3 antibody [EPR19394] (ab200999) at 1/2000 dilution

Lane 1 : Human fetal liver lysate

Lane 2 : Human fetal heart lysate

Lane 3 : Human fetal kidney lysate

Lysates/proteins at 10 µg per lane.

Secondary

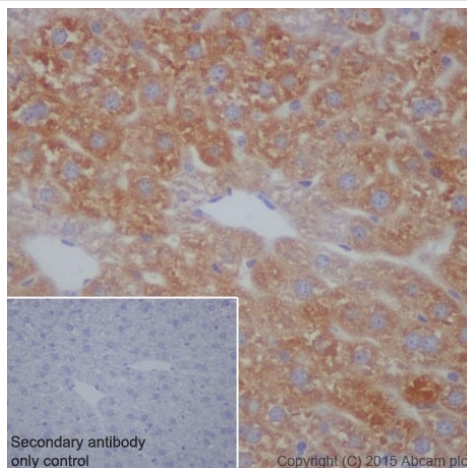
All lanes : Goat Anti-Rabbit IgG Peroxidase Conjugate, specific to the non-reduced form of IgG at 1/10000 dilution

Predicted band size: 187 kDa

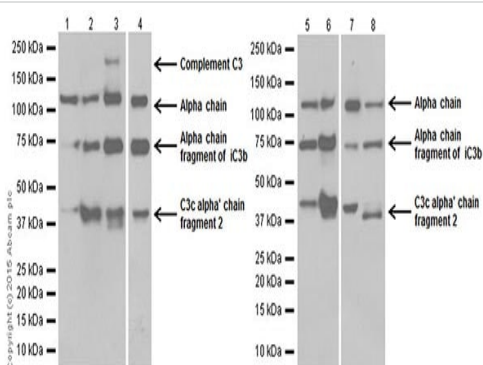
Observed band size: 115,187,68 kDa

Exposure time: 30 seconds

Blocking/Dilution buffer: 5% NFDM/TBST.



Immunohistochemistry (Formalin/PFA-fixed paraffin-embedded sections) - Anti-C3 antibody [EPR19394] (ab200999)



Western blot - Anti-C3 antibody [EPR19394] (ab200999)

Immunohistochemical analysis of paraffin-embedded Mouse liver tissue labeling C3 with ab200999 at 1/2000 dilution, followed by Goat Anti-Rabbit IgG H&L (HRP) ([ab97051](#)) at 1/500 dilution.

Cytoplasm staining on hepatocytes of mouse liver is observed.

Counter stained with Hematoxylin.

Secondary antibody only control: Used PBS instead of primary antibody, secondary antibody is Goat Anti-Rabbit IgG H&L (HRP) ([ab97051](#)) at 1/500 dilution.

Perform heat mediated antigen retrieval with Tris/EDTA buffer pH 9.0 before commencing with IHC staining protocol.

All lanes : Anti-C3 antibody [EPR19394] (ab200999) at 1/2000 dilution

Lane 1 : Mouse brain lysate

Lane 2 : Mouse kidney lysate

Lane 3 : Mouse spleen lysate

Lane 4 : Mouse heart lysate

Lane 5 : Rat brain lysate

Lane 6 : Rat spleen lysate

Lane 7 : Rat heart lysate

Lane 8 : Rat kidney lysate

Lysates/proteins at 10 µg per lane.

Secondary

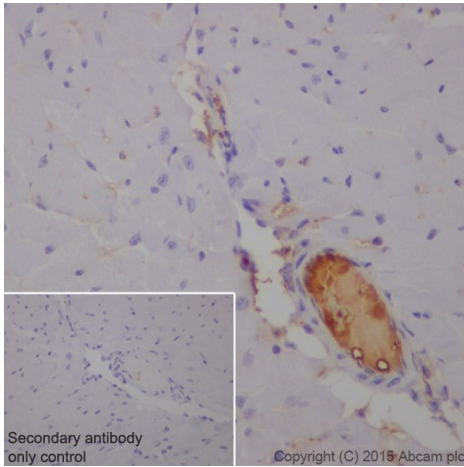
All lanes : Goat Anti-Rabbit IgG H&L (HRP) ([ab97051](#)) at 1/100000 dilution

Predicted band size: 187 kDa

Observed band size: 115,187,43,68 kDa

Blocking/Dilution buffer: 5% NFDm/TBST.

Exposure time: Lane 1,2,3,5 and 6: 3 minutes; Lane 4,7 and 8: 10 seconds.



Immunohistochemistry (Formalin/PFA-fixed paraffin-embedded sections) - Anti-C3 antibody [EPR19394] (ab200999)

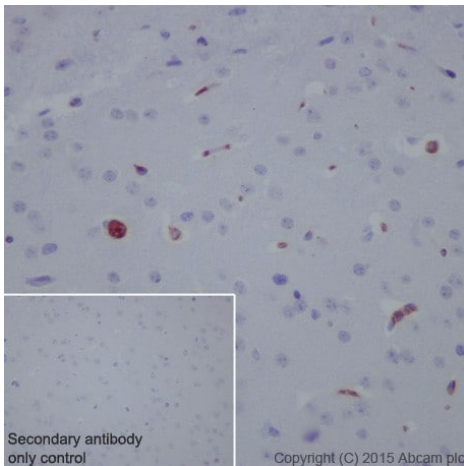
Immunohistochemical analysis of paraffin-embedded Mouse cardiac muscle tissue labeling C3 with ab200999 at 1/2000 dilution, followed by Goat Anti-Rabbit IgG H&L (HRP) ([ab97051](#)) at 1/500 dilution.

The plasma in blood vessel of mouse cardiac muscle was positive staining. The staining pattern is similar to what has been observed in the literature (PMID: 23104558).

Counter stained with Hematoxylin.

Secondary antibody only control: Used PBS instead of primary antibody, secondary antibody is Goat Anti-Rabbit IgG H&L (HRP) ([ab97051](#)) at 1/500 dilution.

Perform heat mediated antigen retrieval with Tris/EDTA buffer pH 9.0 before commencing with IHC staining protocol.



Immunohistochemistry (Formalin/PFA-fixed paraffin-embedded sections) - Anti-C3 antibody [EPR19394] (ab200999)

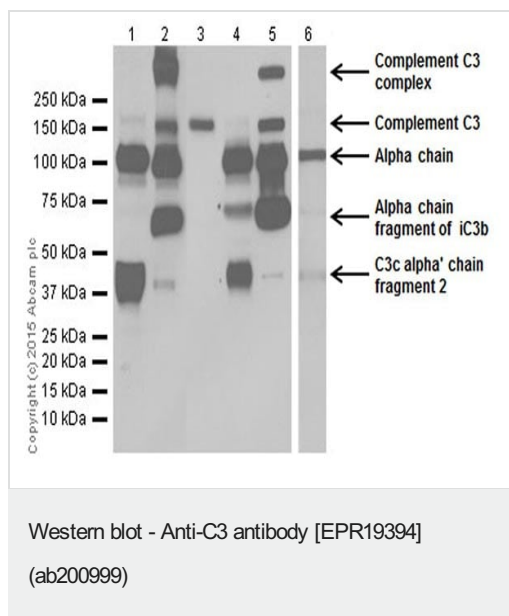
Immunohistochemical analysis of paraffin-embedded Mouse cerebral cortex tissue labeling C3 with ab200999 at 1/2000 dilution, followed by Goat Anti-Rabbit IgG H&L (HRP) ([ab97051](#)) at 1/500 dilution.

The plasma in blood vessels of mouse cerebral cortex was positive staining.

Counter stained with Hematoxylin.

Secondary antibody only control: Used PBS instead of primary antibody, secondary antibody is Goat Anti-Rabbit IgG H&L (HRP) ([ab97051](#)) at 1/500 dilution.

Perform heat mediated antigen retrieval with Tris/EDTA buffer pH 9.0 before commencing with IHC staining protocol.



All lanes : Anti-C3 antibody [EPR19394] (ab200999) at 1/2000 dilution

Lane 1 : Human serum

Lane 2 : Human plasma

Lane 3 : HepG2 (Human liver hepatocellular carcinoma cell line) whole cell lysate

Lane 4 : Mouse plasma

Lane 5 : Rat plasma

Lane 6 : Human milk

Lysates/proteins at 20 µg per lane.

Secondary

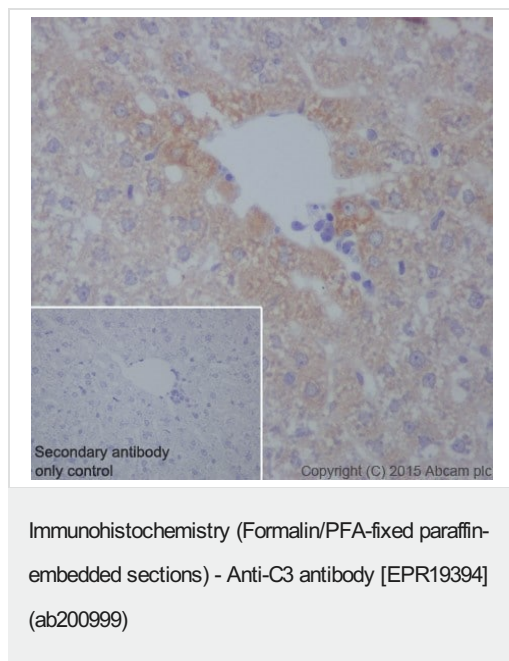
All lanes : Goat Anti-Rabbit IgG Peroxidase Conjugate, specific to the non-reduced form of IgG at 1/10000 dilution

Predicted band size: 187 kDa

Observed band size: 115,187,43,68 kDa

Blocking/Dilution buffer: 5% NFDM/TBST.

Exposure time: Lane 1-5: 8 seconds; Lane 6: 3 minutes.



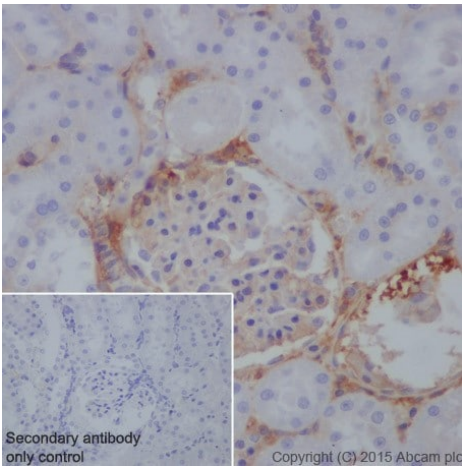
Immunohistochemical analysis of paraffin-embedded Rat liver tissue labeling C3 with ab200999 at 1/2000 dilution, followed by Goat Anti-Rabbit IgG H&L (HRP) (**ab97051**) at 1/500 dilution.

Cytoplasm staining on hepatocytes of rat liver is observed.

Counter stained with Hematoxylin.

Secondary antibody only control: Used PBS instead of primary antibody, secondary antibody is Goat Anti-Rabbit IgG H&L (HRP) (**ab97051**) at 1/500 dilution.

Perform heat mediated antigen retrieval with Tris/EDTA buffer pH 9.0 before commencing with IHC staining protocol.



Immunohistochemistry (Formalin/PFA-fixed paraffin-embedded sections) - Anti-C3 antibody [EPR19394] (ab200999)

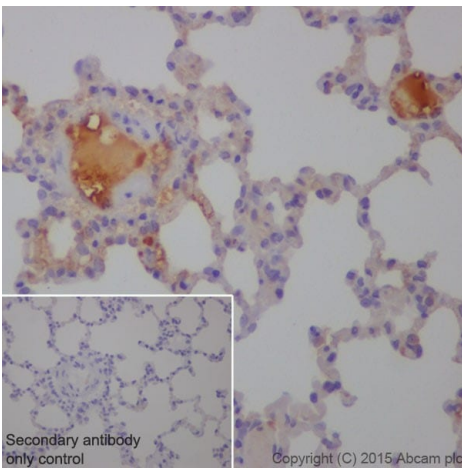
Immunohistochemical analysis of paraffin-embedded Rat kidney tissue labeling C3 with ab200999 at 1/2000 dilution, followed by Goat Anti-Rabbit IgG H&L (HRP) ([ab97051](#)) at 1/500 dilution.

The plasma in blood vessels of rat kidney was positive staining. The staining pattern is similar to what has been observed in the literature (PMID: 23104558).

Counter stained with Hematoxylin.

Secondary antibody only control: Used PBS instead of primary antibody, secondary antibody is Goat Anti-Rabbit IgG H&L (HRP) ([ab97051](#)) at 1/500 dilution.

Perform heat mediated antigen retrieval with Tris/EDTA buffer pH 9.0 before commencing with IHC staining protocol.



Immunohistochemistry (Formalin/PFA-fixed paraffin-embedded sections) - Anti-C3 antibody [EPR19394] (ab200999)

Immunohistochemical analysis of paraffin-embedded Rat lung tissue labeling C3 with ab200999 at 1/2000 dilution, followed by Goat Anti-Rabbit IgG H&L (HRP) ([ab97051](#)) at 1/500 dilution.

The plasma in blood vessels of rat lung was positive staining. The staining pattern is similar to what has been observed in the literature (PMID: 23104558).

Counter stained with Hematoxylin.

Secondary antibody only control: Used PBS instead of primary antibody, secondary antibody is Goat Anti-Rabbit IgG H&L (HRP) ([ab97051](#)) at 1/500 dilution.

Perform heat mediated antigen retrieval with Tris/EDTA buffer pH 9.0 before commencing with IHC staining protocol.

Why choose a recombinant antibody?



Research with confidence
Consistent and reproducible results



Long-term and scalable supply
Recombinant technology



Success from the first experiment
Confirmed specificity



Ethical standards compliant
Animal-free production

Anti-C3 antibody [EPR19394] (ab200999)

Please note: All products are "FOR RESEARCH USE ONLY. NOT FOR USE IN DIAGNOSTIC PROCEDURES"

Our Abpromise to you: Quality guaranteed and expert technical support

- Replacement or refund for products not performing as stated on the datasheet
- Valid for 12 months from date of delivery
- Response to your inquiry within 24 hours
- We provide support in Chinese, English, French, German, Japanese and Spanish
- Extensive multi-media technical resources to help you
- We investigate all quality concerns to ensure our products perform to the highest standards

If the product does not perform as described on this datasheet, we will offer a refund or replacement. For full details of the Abpromise, please visit <https://www.abcam.cn/abpromise> or contact our technical team.

Terms and conditions

- Guarantee only valid for products bought direct from Abcam or one of our authorized distributors