

Anti-C2 antibody ab97461

1 图像

概述

产品名称	Anti-C2抗体
描述	兔多克隆抗体to C2
宿主	Rabbit
经测试应用	适用于: WB
种属反应性	与反应: Human
免疫原	Recombinant fragment, corresponding to a sequence within amino acids 265-612 of Human C2.
阳性对照	293T, A431, H1299, HeLaS3, HepG2, MOLT4 or Raji cell lysate.
常规说明	<p>The Life Science industry has been in the grips of a reproducibility crisis for a number of years. Abcam is leading the way in addressing this with our range of recombinant monoclonal antibodies and knockout edited cell lines for gold-standard validation. Please check that this product meets your needs before purchasing.</p> <p>If you have any questions, special requirements or concerns, please send us an inquiry and/or contact our Support team ahead of purchase. Recommended alternatives for this product can be found below, along with publications, customer reviews and Q&As</p>

性能

形式	Liquid
存放说明	Shipped at 4°C. Upon delivery aliquot and store at -20°C or -80°C. Avoid repeated freeze / thaw cycles.
存储溶液	pH: 7.00 Preservative: 0.01% Thimerosal (merthiolate) Constituents: 1.21% Tris, 0.75% Glycine, 10% Glycerol (glycerin, glycerine)
纯度	Immunogen affinity purified
克隆	多克隆
同种型	IgG

应用

The Abpromise guarantee

Abpromise™承诺保证使用ab97461于以下的经测试应用

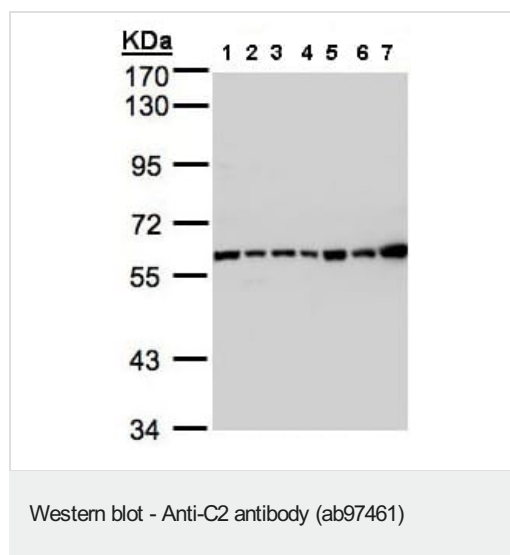
“应用说明”部分 下显示的仅为推荐的起始稀释度;实际最佳的稀释度/浓度应由使用者检定。

应用	Ab评论	说明
WB		1/500 - 1/3000. Predicted molecular weight: 83 kDa.

靶标

功能	Component C2 which is part of the classical pathway of the complement system is cleaved by activated factor C1 into two fragments: C2b and C2a. C2a, a serine protease, then combines with complement factor 4b to generate the C3 or C5 convertase.
疾病相关	Defects in C2 are the cause of complement component 2 deficiency (C2D) [MIM:217000]. A deficiency of the complement classical pathway associated with the development of autoimmune disorders, mainly systemic lupus erythematosus. Skin and joint manifestations are common and renal disease is relatively rare. Patients with complement component 2 deficiency are also reported to have recurrent or invasive infections.
序列相似性	Belongs to the peptidase S1 family. Contains 1 peptidase S1 domain. Contains 3 Sushi (CCP/SCR) domains. Contains 1 VWFA domain.
细胞定位	Secreted.

图片



All lanes : Anti-C2 antibody (ab97461) at 1/1000 dilution

- Lane 1 :** 293T whole cell lysate
- Lane 2 :** A431 whole cell lysate
- Lane 3 :** H1299 whole cell lysate
- Lane 4 :** HeLa S3 whole cell lysate
- Lane 5 :** Hep G2 whole cell lysate
- Lane 6 :** MOLT4 whole cell lysate
- Lane 7 :** Raji whole cell lysate

Lysates/proteins at 30 µg per lane.

Predicted band size: 83 kDa

7.5% SDS-PAGE.

Please note: All products are "FOR RESEARCH USE ONLY. NOT FOR USE IN DIAGNOSTIC PROCEDURES"

Our Abpromise to you: Quality guaranteed and expert technical support

- Replacement or refund for products not performing as stated on the datasheet
- Valid for 12 months from date of delivery
- Response to your inquiry within 24 hours

- We provide support in Chinese, English, French, German, Japanese and Spanish
- Extensive multi-media technical resources to help you
- We investigate all quality concerns to ensure our products perform to the highest standards

If the product does not perform as described on this datasheet, we will offer a refund or replacement. For full details of the Abpromise, please visit <https://www.abcam.cn/abpromise> or contact our technical team.

Terms and conditions

- Guarantee only valid for products bought direct from Abcam or one of our authorized distributors