

Anti-C1s antibody ab66762

2 图像

概述

产品名称	Anti-C1s抗体
描述	兔多克隆抗体to C1s
宿主	Rabbit
经测试应用	适用于: WB, ICC/IF
种属反应性	与反应: Human
免疫原	Synthetic peptide corresponding to Human C1s aa 1-100 conjugated to keyhole limpet haemocyanin. (Peptide available as ab88234)
阳性对照	Recombinant Human C1s protein (ab116902) can be used as a positive control in WB. This antibody gave a positive signal in Human Plasma Total Protein.
常规说明	<p>The Life Science industry has been in the grips of a reproducibility crisis for a number of years. Abcam is leading the way in addressing this with our range of recombinant monoclonal antibodies and knockout edited cell lines for gold-standard validation. Please check that this product meets your needs before purchasing.</p> <p>If you have any questions, special requirements or concerns, please send us an inquiry and/or contact our Support team ahead of purchase. Recommended alternatives for this product can be found below, along with publications, customer reviews and Q&As</p>

性能

形式	Liquid
存放说明	Shipped at 4°C. Store at +4°C short term (1-2 weeks). Upon delivery aliquot. Store at -20°C or -80°C. Avoid freeze / thaw cycle.
存储溶液	<p>pH: 7.40</p> <p>Preservative: 0.02% Sodium azide</p> <p>Constituent: PBS</p> <p>Batches of this product that have a concentration < 1mg/ml may have BSA added as a stabilising agent. If you would like information about the formulation of a specific lot, please contact our scientific support team who will be happy to help.</p>
纯度	Immunogen affinity purified

克隆

多克隆

同种型

IgG

应用

The Abpromise guarantee

Abpromise™承诺保证使用ab66762于以下的经测试应用

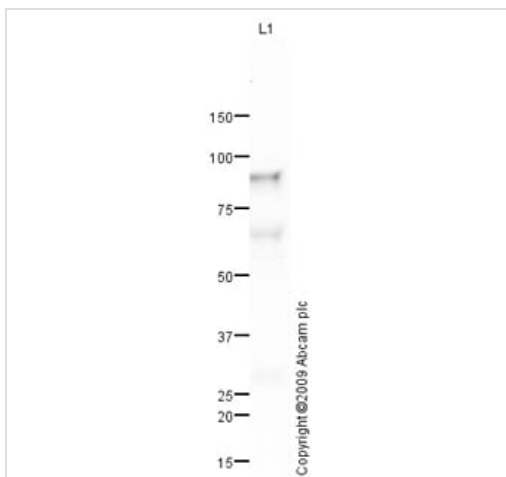
“应用说明”部分 下显示的仅为推荐的起始稀释度;实际最佳的稀释度/浓度应由使用者检定。

应用	Ab评论	说明
WB		Use a concentration of 1 µg/ml. Detects a band of approximately 90 kDa (predicted molecular weight: 76 kDa).
ICC/IF		Use a concentration of 1 µg/ml.

靶标

功能	C1s B chain is a serine protease that combines with C1q and C1s to form C1, the first component of the classical pathway of the complement system. C1r activates C1s so that it can, in turn, activate C2 and C4.
疾病相关	Defects in C1S are the cause of complement component C1s deficiency (C1SD) [MIM:613783]. A rare defect resulting in C1 deficiency and impaired activation of the complement classical pathway. C1 deficiency generally leads to severe immune complex disease with features of systemic lupus erythematosus and glomerulonephritis.
序列相似性	Belongs to the peptidase S1 family. Contains 2 CUB domains. Contains 1 EGF-like domain. Contains 1 peptidase S1 domain. Contains 2 Sushi (CCP/SCR) domains.
翻译后修饰	The iron and 2-oxoglutarate dependent 3-hydroxylation of aspartate and asparagine is (R) stereospecific within EGF domains.

图片



Western blot - Anti-C1s antibody (ab66762)

Anti-C1s antibody (ab66762) at 1 µg/ml + Human Plasma Total Protein Lysate at 10 µg

Secondary

Goat polyclonal to Rabbit IgG - H&L - Pre-Adsorbed (HRP) at 1/3000 dilution

Developed using the ECL technique.

Performed under reducing conditions.

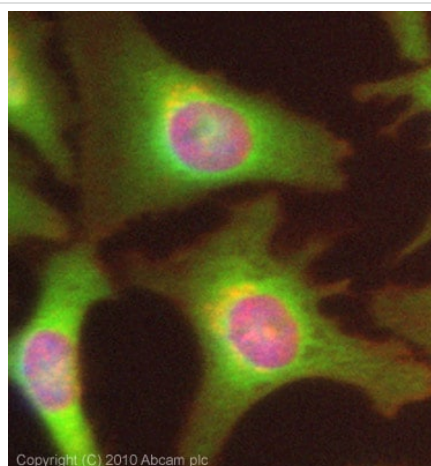
Predicted band size: 76 kDa

Observed band size: 90 kDa

Additional bands at: 65 kDa. We are unsure as to the identity of these extra bands.

Exposure time: 3 minutes

The Complement C1s subcomponent protein contains a number of potential glycosylation sites (SwissProt) which may explain its migration at a higher molecular weight than predicted. Abcam welcomes customer feedback and would appreciate any comments regarding this product and the data presented above.



Immunocytochemistry/ Immunofluorescence - Anti-C1s antibody (ab66762)

ICC/IF image of ab66762 stained HeLa cells. The cells were 100% methanol fixed (5 min) and then incubated in 1%BSA / 10% normal goat serum / 0.3M glycine in 0.1% PBS-Tween for 1h to permeabilise the cells and block non-specific protein-protein interactions. The cells were then incubated with the antibody (ab66762, 1µg/ml) overnight at +4°C. The secondary antibody (green) was Alexa Fluor® 488 goat anti-rabbit IgG (H+L) used at a 1/1000 dilution for 1h. Alexa Fluor® 594 WGA was used to label plasma membranes (red) at a 1/200 dilution for 1h. DAPI was used to stain the cell nuclei (blue) at a concentration of 1.43µM. This antibody also gave a positive result in 100% methanol fixed (5 min) HepG2 and MCF7 cells at 1µg/ml.

Please note: All products are "FOR RESEARCH USE ONLY. NOT FOR USE IN DIAGNOSTIC PROCEDURES"

Our Abpromise to you: Quality guaranteed and expert technical support

- Replacement or refund for products not performing as stated on the datasheet
- Valid for 12 months from date of delivery
- Response to your inquiry within 24 hours
- We provide support in Chinese, English, French, German, Japanese and Spanish
- Extensive multi-media technical resources to help you
- We investigate all quality concerns to ensure our products perform to the highest standards

If the product does not perform as described on this datasheet, we will offer a refund or replacement. For full details of the Abpromise, please visit <https://www.abcam.cn/abpromise> or contact our technical team.

Terms and conditions

- Guarantee only valid for products bought direct from Abcam or one of our authorized distributors