

Anti-C1QA antibody [EPR2979(2)] ab108325

重组 RabMAb

1 References [2 图像](#)

概述

产品名称	Anti-C1QA抗体[EPR2979(2)]
描述	兔单克隆抗体[EPR2979(2)] to C1QA
宿主	Rabbit
经测试应用	适用于: WB 不适用于: Flow Cyt or IHC-P
种属反应性	与反应: Human
免疫原	Synthetic peptide. This information is proprietary to Abcam and/or its suppliers.
阳性对照	Humanplasma and serum lysates.
常规说明	<p>This product is a recombinant monoclonal antibody, which offers several advantages including:</p> <ul style="list-style-type: none">- High batch-to-batch consistency and reproducibility- Improved sensitivity and specificity- Long-term security of supply- Animal-free production <p>For more information see here.</p> <p>Our RabMAb[®] technology is a patented hybridoma-based technology for making rabbit monoclonal antibodies. For details on our patents, please refer to RabMAb[®] patents.</p> <p>Mouse, Rat: We have preliminary internal testing data to indicate this antibody may not react with these species. Please contact us for more information.</p>

性能

形式	Liquid
存放说明	Frozen Stock (-20C). Shelf life 12 months.
存储溶液	pH: 7.20 Preservative: 0.05% Sodium azide Constituents: 0.1% BSA, 40% Glycerol (glycerin, glycerine), 9.85% Tris glycine, 50% Tissue culture supernatant
纯度	Tissue culture supernatant
克隆	单克隆

克隆编号 EPR2979(2)
同种型 IgG

应用

The Abpromise guarantee **Abpromise™**承诺保证使用ab108325于以下的经测试应用

“应用说明”部分 下显示的仅为推荐的起始稀释度;实际最佳的稀释度/浓度应由使用者检定。

应用	Ab评论	说明
WB		1/1000 - 1/10000. Predicted molecular weight: 26 kDa.

应用说明 Is unsuitable for Flow Cyt or IHC-P.

靶标

功能 C1q associates with the proenzymes C1r and C1s to yield C1, the first component of the serum complement system. The collagen-like regions of C1q interact with the Ca(2+)-dependent C1r(2)C1s(2) proenzyme complex, and efficient activation of C1 takes place on interaction of the globular heads of C1q with the Fc regions of IgG or IgM antibody present in immune complexes.

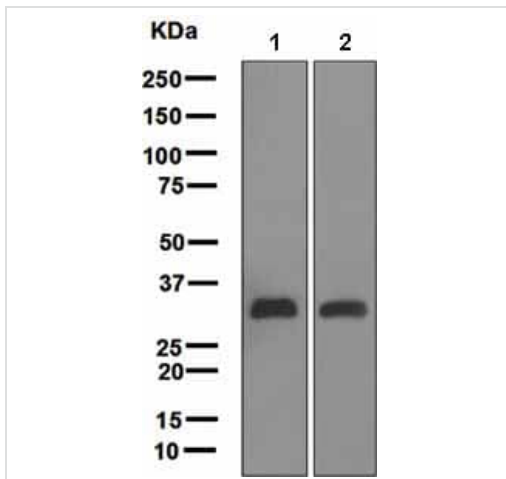
疾病相关 Defects in C1QA are the cause of complement component C1qA deficiency (C1QAD) [MIM:120550]. A rare defect resulting in C1 deficiency and impaired activation of the complement classical pathway. C1 deficiency generally leads to severe immune complex disease with features of systemic lupus erythematosus and glomerulonephritis.

序列相似性 Contains 1 C1q domain.
 Contains 1 collagen-like domain.

翻译后修饰 O-linked glycans consist of Glc-Gal disaccharides bound to the oxygen atom of post-translationally added hydroxyl groups.

细胞定位 Secreted.

图片



Western blot - Anti-C1QA antibody [EPR2979(2)]
(ab108325)

All lanes : Anti-C1QA antibody [EPR2979(2)] (ab108325) at 1/1000 dilution





Lane 1 : Human plasma lysate

Lane 2 : Human serum lysates

Lysates/proteins at 10 µg per lane.

Predicted band size: 26 kDa

Why choose a recombinant antibody?

 <p>Research with confidence Consistent and reproducible results</p>	 <p>Long-term and scalable supply Recombinant technology</p>
 <p>Success from the first experiment Confirmed specificity</p>	 <p>Ethical standards compliant Animal-free production</p>

Anti-C1QA antibody [EPR2979(2)] (ab108325)

Please note: All products are "FOR RESEARCH USE ONLY. NOT FOR USE IN DIAGNOSTIC PROCEDURES"

Our Abpromise to you: Quality guaranteed and expert technical support

- Replacement or refund for products not performing as stated on the datasheet
- Valid for 12 months from date of delivery
- Response to your inquiry within 24 hours
- We provide support in Chinese, English, French, German, Japanese and Spanish
- Extensive multi-media technical resources to help you
- We investigate all quality concerns to ensure our products perform to the highest standards

If the product does not perform as described on this datasheet, we will offer a refund or replacement. For full details of the Abpromise, please visit <https://www.abcam.cn/abpromise> or contact our technical team.

Terms and conditions

- Guarantee only valid for products bought direct from Abcam or one of our authorized distributors