

# Anti-c-Rel (phospho S503) antibody ab30624

[1 References](#) [2 图像](#)

### 概述

---

<b>产品名称</b>	Anti-c-Rel (phospho S503)抗体
<b>描述</b>	兔多克隆抗体to c-Rel (phospho S503)
<b>宿主</b>	Rabbit
<b>经测试应用</b>	<b>适用于:</b> WB, IHC-P
<b>种属反应性</b>	<b>与反应:</b> Human
<b>免疫原</b>	Synthetic peptide corresponding to Human c-Rel (phospho S503).
<b>阳性对照</b>	Breast carcinoma, MDA-MB-435 cells
<b>常规说明</b>	<p>The Life Science industry has been in the grips of a reproducibility crisis for a number of years. Abcam is leading the way in addressing this with our range of recombinant monoclonal antibodies and knockout edited cell lines for gold-standard validation. Please check that this product meets your needs before purchasing.</p> <p>If you have any questions, special requirements or concerns, please send us an inquiry and/or contact our Support team ahead of purchase. Recommended alternatives for this product can be found below, along with publications, customer reviews and Q&amp;As</p>

### 性能

---

<b>形式</b>	Liquid
<b>存放说明</b>	Shipped at 4°C. Upon delivery aliquot and store at -20°C. Avoid freeze / thaw cycles.
<b>存储溶液</b>	pH: 7.40 Preservative: 0.02% Sodium azide Constituents: PBS, 50% Glycerol (glycerin, glycerine), 0.87% Sodium chloride  Without Mg <sup>2+</sup> and Ca <sup>2+</sup>
<b>纯度</b>	Immunogen affinity purified
<b>纯化说明</b>	The antibody against non phosphopeptide was removed by chromatography using non phosphopeptide corresponding to the phosphorylation site.
<b>克隆</b>	多克隆
<b>同种型</b>	IgG

## 应用

**The Abpromise guarantee**      **Abpromise™** 承诺保证使用 ab30624 于以下的经测试应用

“应用说明”部分 下显示的仅为推荐的起始稀释度;实际最佳的稀释度/浓度应由使用者检定。

应用	Ab评论	说明
WB		1/500 - 1/1000. Predicted molecular weight: 69 kDa.
IHC-P		Use at an assay dependent concentration.

## 靶标

### 功能

Proto-oncogene that may play a role in differentiation and lymphopoiesis. NF-kappa-B is a pleiotropic transcription factor which is present in almost all cell types and is involved in many biological processes such as inflammation, immunity, differentiation, cell growth, tumorigenesis and apoptosis. NF-kappa-B is a homo- or heterodimeric complex formed by the Rel-like domain-containing proteins RELA/p65, RELB, NFKB1/p105, NFKB1/p50, REL and NFKB2/p52. The dimers bind at kappa-B sites in the DNA of their target genes and the individual dimers have distinct preferences for different kappa-B sites that they can bind with distinguishable affinity and specificity. Different dimer combinations act as transcriptional activators or repressors, respectively. NF-kappa-B is controlled by various mechanisms of post-translational modification and subcellular compartmentalization as well as by interactions with other cofactors or corepressors. NF-kappa-B complexes are held in the cytoplasm in an inactive state complexed with members of the NF-kappa-B inhibitor (I-kappa-B) family. In a conventional activation pathway, I-kappa-B is phosphorylated by I-kappa-B kinases (IKKs) in response to different activators, subsequently degraded thus liberating the active NF-kappa-B complex which translocates to the nucleus. The NF-kappa-B heterodimer RELA/p65-c-Rel is a transcriptional activator.

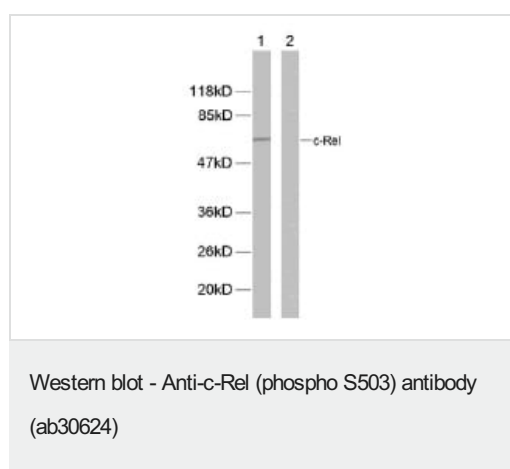
### 序列相似性

Contains 1 RHD (Rel-like) domain.

### 细胞定位

Nucleus.

## 图片



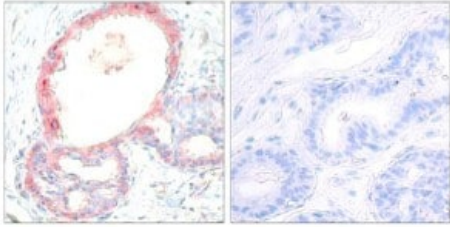
**All lanes :** Anti-c-Rel (phospho S503) antibody (ab30624) at 1/500 dilution

**Lane 1 :** extracts from MDA-MB-435 cells (5-30ug).

**Lane 2 :** extracts from MDA-MB-435 cells (5-30ug), preincubated with synthesized peptide (negative control).

**Predicted band size:** 69 kDa

**Observed band size:** 60 kDa



Immunohistochemistry (Formalin/PFA-fixed paraffin-embedded sections) - Anti-c-Rel (phospho S503) antibody (ab30624)

Immunohistochemical analysis of paraffin embedded breast carcinoma tissue sections, using 1/50 c-Rel (Phospho- Ser503) Antibody (ab30624). Left: untreated sample; Right: sample preincubated with synthesized phosphopeptide (negative control).

**Please note:** All products are "FOR RESEARCH USE ONLY. NOT FOR USE IN DIAGNOSTIC PROCEDURES"

### Our Abpromise to you: Quality guaranteed and expert technical support

---

- Replacement or refund for products not performing as stated on the datasheet
- Valid for 12 months from date of delivery
- Response to your inquiry within 24 hours
- We provide support in Chinese, English, French, German, Japanese and Spanish
- Extensive multi-media technical resources to help you
- We investigate all quality concerns to ensure our products perform to the highest standards

If the product does not perform as described on this datasheet, we will offer a refund or replacement. For full details of the Abpromise, please visit <https://www.abcam.cn/abpromise> or contact our technical team.

### Terms and conditions

---

- Guarantee only valid for products bought direct from Abcam or one of our authorized distributors