




Anti-c-Myb antibody [ANA236B] ab169111

敲除验证

2 图像

概述

产品名称	Anti-c-Myb抗体[ANA236B]
描述	大鼠单克隆抗体[ANA236B] to c-Myb
宿主	Rat
经测试应用	适用于: WB 不适用于: ICC,IHC-Fr,IHC-P or IP
种属反应性	与反应: Human 预测可用于: Mouse, Cow 
免疫原	<p>Recombinant fragment (His-tag) corresponding to Human c-Myb aa 402-640. Sequence:</p> <p>FLNTSSNHE NSDLEMPSLT STPLIGHKLT VTTPFHRDQT VKTQKENTVF RTPAIKRSIL ESSPRTPTPF KHALAAQEIK YGPLKMLPQT PSHLVEDLQD VIKQESDESG IVAEFQENGP PLLKKIKQEV ESPTDKSGNF FCSHHWEGDS LNTQLFTQTS PVADAPNILT SSVLMAPASE DEDNVLKRAFT VPKNRSLASP LQPCSSTWEP ASCGKMEEQM TSSSQARKYV NAFSARTLVM</p> <p>Database link: P10242</p> <p> Run BLAST with  Run BLAST with</p>
阳性对照	Recombinant Human c-Myb protein (ab114406) can be used as a positive control in WB. Hek-V5-c-Myb transfected cells; KARPAS299, Jurkat, MT2 and SUP-T1 cell lysates; Human thymus, bone marrow and lymphoblastic lymphoma tissues.
常规说明	<p>The Life Science industry has been in the grips of a reproducibility crisis for a number of years. Abcam is leading the way in addressing this with our range of recombinant monoclonal antibodies and knockout edited cell lines for gold-standard validation. Please check that this product meets your needs before purchasing.</p> <p>If you have any questions, special requirements or concerns, please send us an inquiry and/or contact our Support team ahead of purchase. Recommended alternatives for this product can be found below, along with publications, customer reviews and Q&As</p>

性能

形式	Liquid
存放说明	Shipped at 4°C. Upon delivery aliquot. Store at +4°C. Do Not Freeze.
存储溶液	pH: 7.4 Preservative: 0.02% Sodium azide Constituents: PBS, 1% BSA
克隆	单克隆
克隆编号	ANA236B
同种型	IgG2a

应用

The Abpromise guarantee **Abpromise™**承诺保证使用ab169111于以下的经测试应用

“应用说明”部分 下显示的仅为推荐的起始稀释度;实际最佳的稀释度/浓度应由使用者检定。

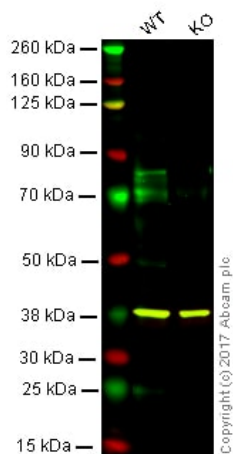
应用	Ab评论	说明
WB		1/50. Predicted molecular weight: 72 kDa.

应用说明 Is unsuitable for ICC,IHC-Fr,IHC-P or IP.

靶标

功能	Transcriptional activator; DNA-binding protein that specifically recognize the sequence 5'-YAAC[GT]G-3'. Plays an important role in the control of proliferation and differentiation of hematopoietic progenitor cells.
序列相似性	Contains 3 HTH myb-type DNA-binding domains.
结构域	Comprised of 3 domains; an N-terminal DNA-binding domain, a centrally located transcriptional activation domain and a C-terminal domain involved in transcriptional repression.
翻译后修饰	Ubiquitinated; mediated by SIAH1 and leading to its subsequent proteasomal degradation. Phosphorylated by NLK on multiple sites, which induces proteasomal degradation.
细胞定位	Nucleus.

图片



Western blot - Anti-c-Myb antibody [ANA236B]
(ab169111)

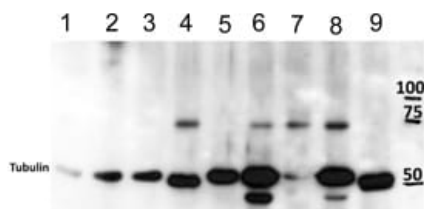
Lane 1: Wild-type HAP1 whole cell lysate (20 µg)

Lane 2: c-Myb knockout HAP1 whole cell lysate (20 µg)

Lanes 1 - 2: Merged signal (red and green). Green - ab169111 observed at 75 kDa. Red - loading control, **ab181602**, observed at 37 kDa.

Ab169111 was shown to specifically react with c-Myb, in wild type HAP1 cells as signal was lost in c-Myb knockout cells. Wild-type and c-Myb knockout samples were subjected SDS-PAGE.

Ab169111 and **ab181602** (Rabbit anti-GAPDH loading control) were incubated overnight at 4°C at 1/50 dilution and 1/20000 dilution respectively. Blots were developed with Goat anti-Rat IgG H&L (IRDye® 800CW) (**ab253031**) preabsorbed and Goat anti-Rabbit IgG H&L (IRDye® 680RD) preabsorbed **ab216777** secondary antibodies at 1/10000 dilution for 1 hour at room temperature before imaging.



Western blot - Anti-c-Myb antibody [ANA236B]
(ab169111)

All lanes : Anti-c-Myb antibody [ANA236B] (ab169111) at 1/50 dilution

Lane 1 : DAUDI cell lysate

Lane 2 : Ramos cell lysate

Lane 3 : Raji cell lysate

Lane 4 : KARPAS299 cell lysate

Lane 5 : HUT78 cell lysate

Lane 6 : Jurkat cell lysate

Lane 7 : MT2 cell lysate

Lane 8 : SUP-T1 cell lysate

Lane 9 : YT cell lysate

Lysates/proteins at 150 µg per lane.

Predicted band size: 72 kDa

Our Abpromise to you: Quality guaranteed and expert technical support

- Replacement or refund for products not performing as stated on the datasheet
- Valid for 12 months from date of delivery
- Response to your inquiry within 24 hours

- We provide support in Chinese, English, French, German, Japanese and Spanish
- Extensive multi-media technical resources to help you
- We investigate all quality concerns to ensure our products perform to the highest standards

If the product does not perform as described on this datasheet, we will offer a refund or replacement. For full details of the Abpromise, please visit <https://www.abcam.cn/abpromise> or contact our technical team.

Terms and conditions

- Guarantee only valid for products bought direct from Abcam or one of our authorized distributors