

Anti-c-Fos (phospho T232) antibody ab43175

2 References **2 图像**

概述

产品名称	Anti-c-Fos (phospho T232)抗体
描述	兔多克隆抗体to c-Fos (phospho T232)
宿主	Rabbit
经测试应用	适用于: WB
种属反应性	与反应: Human 预测可用于: Sheep, Pig, Chimpanzee 
免疫原	Synthetic peptide corresponding to Human c-Fos aa 200-300 (phospho T232) conjugated to keyhole limpet haemocyanin. (Peptide available as ab43652)
阳性对照	This antibody gave a positive signal in the following human whole cell lysates: A431 - EGF treated, HeLa, Hela - Bleomycin Treated (40U/ml), Hela - Hydroxyurea Treated (48hr, 2uM). This antibody also gave a positive signal against the Full length Recombinant FOS protein (Tagged).
常规说明	<p>The Life Science industry has been in the grips of a reproducibility crisis for a number of years. Abcam is leading the way in addressing this with our range of recombinant monoclonal antibodies and knockout edited cell lines for gold-standard validation. Please check that this product meets your needs before purchasing.</p> <p>If you have any questions, special requirements or concerns, please send us an inquiry and/or contact our Support team ahead of purchase. Recommended alternatives for this product can be found below, along with publications, customer reviews and Q&As</p>

性能

形式	Liquid
存放说明	Shipped at 4°C. Store at +4°C short term (1-2 weeks). Upon delivery aliquot. Store at -20°C or -80°C. Avoid freeze / thaw cycle.
存储溶液	pH: 7.40 Preservative: 0.02% Sodium azide Constituent: PBS
	Batches of this product that have a concentration < 1mg/ml may have BSA added as a stabilising agent. If you would like information about the formulation of a specific lot, please contact our scientific support team who will be happy to help.

纯度	Immunogen affinity purified
克隆	多克隆
同种型	IgG

应用

The Abpromise guarantee **Abpromise™**承诺保证使用ab43175于以下的经测试应用

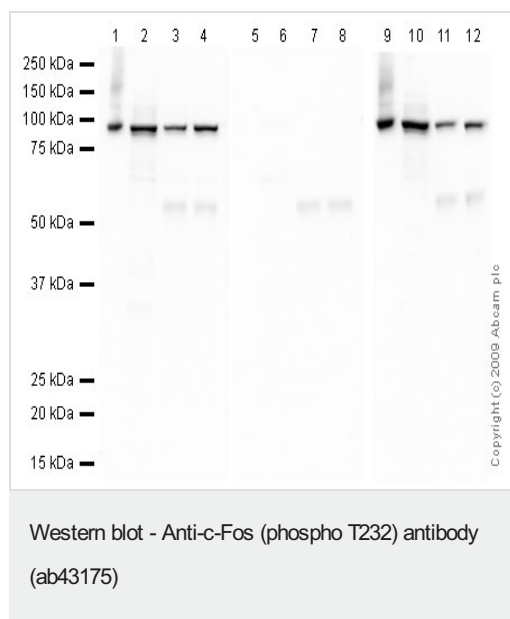
“应用说明”部分 下显示的仅为推荐的起始稀释度;实际最佳的稀释度/浓度应由使用者检定。

应用	Ab评论	说明
WB		Use a concentration of 1 µg/ml. Detects a band of approximately 95 kDa (predicted molecular weight: 41 kDa).

靶标

功能	Nuclear phosphoprotein which forms a tight but non-covalently linked complex with the JUN/AP-1 transcription factor. In the heterodimer, FOS and JUN/AP-1 basic regions each seems to interact with symmetrical DNA half sites. On TGF-beta activation, forms a multimeric SMAD3/SMAD4/JUN/FOS complex at the AP1/SMAD-binding site to regulate TGF-beta-mediated signaling. Has a critical function in regulating the development of cells destined to form and maintain the skeleton. It is thought to have an important role in signal transduction, cell proliferation and differentiation.
序列相似性	Belongs to the bZIP family. Fos subfamily. Contains 1 bZIP domain.
翻译后修饰	Phosphorylated in the C-terminal upon stimulation by nerve growth factor (NGF) and epidermal growth factor (EGF). Phosphorylated, in vitro, by MAPK and RSK1. Phosphorylation on both Ser-362 and Ser-374 by MAPK1/2 and RSK1/2 leads to protein stabilization with phosphorylation on Ser-374 being the major site for protein stabilization on NGF stimulation. Phosphorylation on Ser-362 and Ser-374 primes further phosphorylations on Thr-325 and Thr-331 through promoting docking of MAPK to the DEF domain. Phosphorylation on Thr-232, induced by HA-RAS, activates the transcriptional activity and antagonizes sumoylation. Phosphorylation on Ser-362 by RSK2 in osteoblasts contributes to osteoblast transformation. Constitutively sumoylated by SUMO1, SUMO2 and SUMO3. Desumoylated by SENP2. Sumoylation requires heterodimerization with JUN and is enhanced by mitogen stimulation. Sumoylation inhibits the AP-1 transcriptional activity and is, itself, inhibited by Ras-activated phosphorylation on Thr-232.
细胞定位	Nucleus.

图片



All lanes : Anti-c-Fos (phospho T232) antibody (ab43175) at 1 µg/ml

Lane 1 : A431 (Human epithelial carcinoma cell line) Whole Cell Lysate - EGF treated

Lane 2 : HeLa (Human epithelial carcinoma cell line) Whole Cell Lysate

Lane 3 : Hela Whole Cell Lysate - Bleomycin Treated (40U/ml)

Lane 4 : Hela Whole Cell Lysate - Hydroxyurea Treated (48hr, 2uM)

Lane 5 : A431 (Human epithelial carcinoma cell line) Whole Cell Lysate - EGF treated with Human c-Fos (phospho T232) peptide ([ab43652](#)) at 1 µg/ml

Lane 6 : HeLa (Human epithelial carcinoma cell line) Whole Cell Lysate with Human c-Fos (phospho T232) peptide ([ab43652](#)) at 1 µg/ml

Lane 7 : Hela Whole Cell Lysate - Bleomycin Treated (40U/ml) with Human c-Fos (phospho T232) peptide ([ab43652](#)) at 1 µg/ml

Lane 8 : Hela Whole Cell Lysate - Hydroxyurea Treated (48hr, 2uM) with Human c-Fos (phospho T232) peptide ([ab43652](#)) at 1 µg/ml

Lane 9 : A431 (Human epithelial carcinoma cell line) Whole Cell Lysate - EGF treated with Human c-Fos peptide ([ab60297](#)) at 1 µg/ml

Lane 10 : HeLa (Human epithelial carcinoma cell line) Whole Cell Lysate with Human c-Fos peptide ([ab60297](#)) at 1 µg/ml

Lane 11 : Hela Whole Cell Lysate - Bleomycin Treated (40U/ml) with Human c-Fos peptide ([ab60297](#)) at 1 µg/ml

Lane 12 : Hela Whole Cell Lysate - Hydroxyurea Treated (48hr, 2uM) with Human c-Fos peptide ([ab60297](#)) at 1 µg/ml

Lysates/proteins at 10 µg per lane.

Secondary

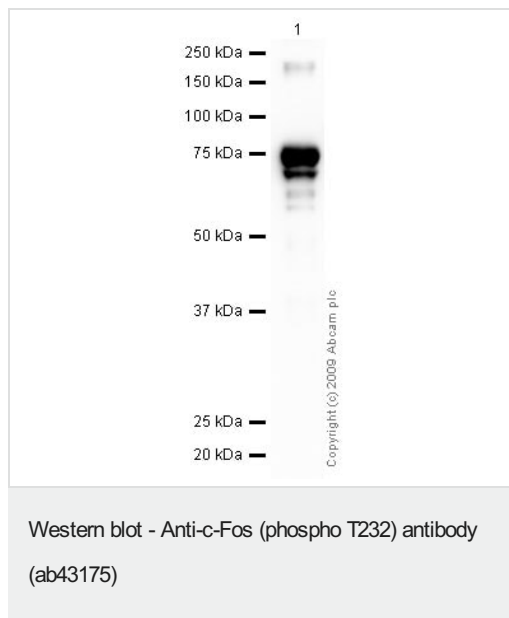
Lanes 1 & 12 : Goat polyclonal to Rabbit IgG - H&L - Pre-Adsorbed (HRP) at 1/3000 dilution

Lanes 2-11 : Goat polyclonal to Rabbit IgG - H&L - Pre-Adsorbed (HRP) at 1/3000 dilution

Performed under reducing conditions.

Predicted band size: 41 kDa

ab43175 detects a 95 kDa band in western blot. This is consistent with results obtained by other commercially available antibodies to this target, as c-Fos has been reported to dimerise with the c-Jun protein hence migration at a higher molecular weight than predicted.



Anti-c-Fos (phospho T232) antibody (ab43175) at 1 µg/ml +
Recombinant Human c-Fos protein ([ab56280](#)) at 0.1 µg

Secondary

Goat polyclonal to Rabbit IgG - H&L - Pre-Adsorbed (HRP) at
1/3000 dilution

Performed under reducing conditions.

Predicted band size: 41 kDa

Observed band size: 78 kDa

[ab56280](#), c-Fos protein (Tagged), has a predicted molecular weight of 78 kDa in SDS-PAGE.

Please note: All products are "FOR RESEARCH USE ONLY. NOT FOR USE IN DIAGNOSTIC PROCEDURES"

Our Abpromise to you: Quality guaranteed and expert technical support

- Replacement or refund for products not performing as stated on the datasheet
- Valid for 12 months from date of delivery
- Response to your inquiry within 24 hours
- We provide support in Chinese, English, French, German, Japanese and Spanish
- Extensive multi-media technical resources to help you
- We investigate all quality concerns to ensure our products perform to the highest standards

If the product does not perform as described on this datasheet, we will offer a refund or replacement. For full details of the Abpromise, please visit <https://www.abcam.cn/abpromise> or contact our technical team.

Terms and conditions

- Guarantee only valid for products bought direct from Abcam or one of our authorized distributors