

### Anti-BTN3A2 antibody [OT11A6] ab118051

#### 9 图像

#### 概述

产品名称	Anti-BTN3A2抗体[OT11A6]
描述	小鼠单克隆抗体[OT11A6] to BTN3A2
宿主	Mouse
经测试应用	适用于: WB, IHC-P, ICC/IF
种属反应性	与反应: Human, African green monkey
免疫原	Recombinant full length protein corresponding to Human BTN3A2. Produced in HEK293T cells (NP_008978). Database link: <a href="#">P78410</a>
阳性对照	WB: HEK-293T cell lysate transfected with pCMV6-ENTRY BTN3A2. IHC-P: Human breast, colon, kidney, lung, ovary and endometrium tissues. ICC/IF: COS7 cells transiently transfected by pCMV6-ENTRY BTN3A2 and HT29 cells.
常规说明	<p>The Life Science industry has been in the grips of a reproducibility crisis for a number of years. Abcam is leading the way in addressing this with our range of recombinant monoclonal antibodies and knockout edited cell lines for gold-standard validation. Please check that this product meets your needs before purchasing.</p> <p>If you have any questions, special requirements or concerns, please send us an inquiry and/or contact our Support team ahead of purchase. Recommended alternatives for this product can be found below, along with publications, customer reviews and Q&amp;As</p>

#### 性能

形式	Liquid
存放说明	Shipped at 4°C. Store at +4°C short term (1-2 weeks). Upon delivery aliquot. Store at -20°C long term. Avoid freeze / thaw cycle.
存储溶液	pH: 7.30 Preservative: 0.02% Sodium azide Constituents: 50% Glycerol, PBS, 1% BSA
纯度	Affinity purified
纯化说明	Purified from cell culture supernatant by affinity chromatography.
克隆	单克隆
克隆编号	OT11A6

同种型

IgG1

## 应用

### The Abpromise guarantee

**Abpromise™**承诺保证使用ab118051于以下的经测试应用

“应用说明”部分 下显示的仅为推荐的起始稀释度;实际最佳的稀释度/浓度应由使用者检定。

应用	Ab评论	说明
WB		1/2000. Predicted molecular weight: 36 kDa.
IHC-P		1/50.
ICC/IF		1/100.

## 靶标

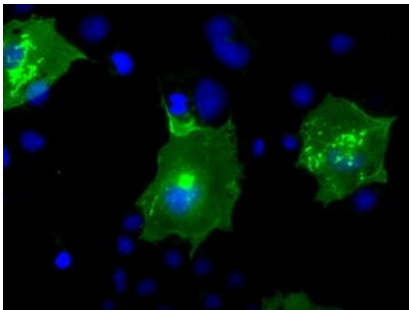
### 序列相似性

Belongs to the immunoglobulin superfamily. BTN/MOG family.  
Contains 1 Ig-like V-type (immunoglobulin-like) domain.

### 细胞定位

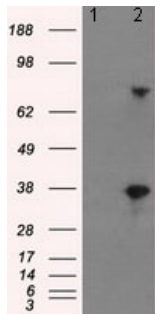
Membrane.

## 图片



COS-7 (African green monkey kidney fibroblast-like cell line) cells transiently transfected by pCMV6-ENTRY BTN3A2 stained for BTN3A2 (Green) using ab118051 at 1/100 dilution in ICC/IF.

Immunocytochemistry/ Immunofluorescence - Anti-BTN3A2 antibody [OT11A6] (ab118051)



Western blot - Anti-BTN3A2 antibody [OT11A6] (ab118051)

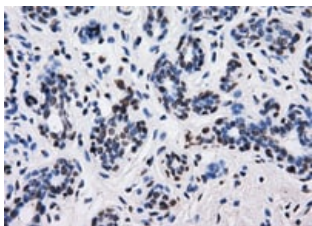
**All lanes** : Anti-BTN3A2 antibody [OT11A6] (ab118051) at 1/2000 dilution

**Lane 1** : HEK-293T (human epithelial cell line from embryonic kidney transformed with large T antigen) cell lysate transfected with pCMV6-ENTRY control

**Lane 2** : HEK-293T cell lysate transfected with pCMV6-ENTRY BTN3A2 cDNA

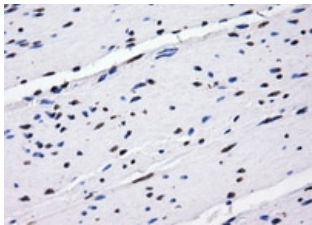
Lysates/proteins at 5 µg per lane.

**Predicted band size:** 36 kDa



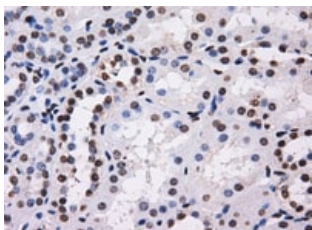
Immunohistochemistry (Formalin/PFA-fixed paraffin-embedded sections) - Anti-BTN3A2 antibody [OT11A6] (ab118051)

Paraffin-embedded Human Breast tissue stained for BTN3A2 using ab118051 at 1/50 dilution in immunohistochemical analysis.



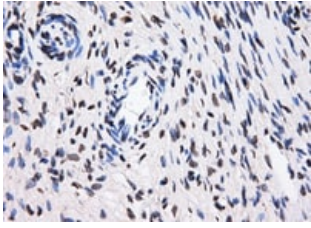
Immunohistochemistry (Formalin/PFA-fixed paraffin-embedded sections) - Anti-BTN3A2 antibody [OT11A6] (ab118051)

Paraffin-embedded Human colon tissue stained for BTN3A2 using ab118051 at 1/50 dilution in immunohistochemical analysis.



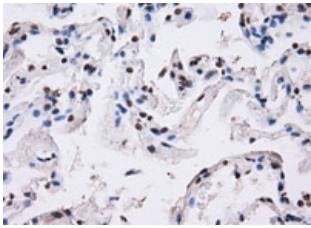
Immunohistochemistry (Formalin/PFA-fixed paraffin-embedded sections) - Anti-BTN3A2 antibody [OT11A6] (ab118051)

Paraffin-embedded Human kidney tissue stained for BTN3A2 using ab118051 at 1/50 dilution in immunohistochemical analysis.



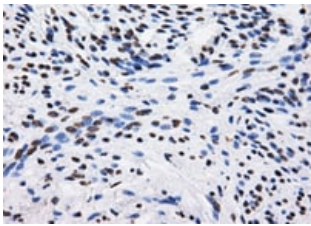
Immunohistochemistry (Formalin/PFA-fixed paraffin-embedded sections) - Anti-BTN3A2 antibody [OT11A6] (ab118051)

Paraffin-embedded Human ovary tissue stained for BTN3A2 using ab118051 at 1/50 dilution in immunohistochemical analysis.



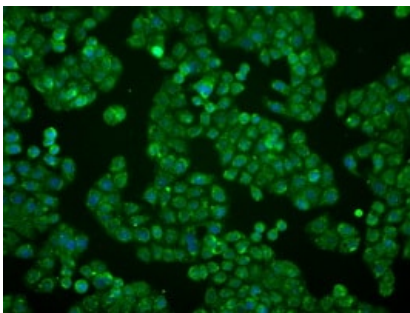
Immunohistochemistry (Formalin/PFA-fixed paraffin-embedded sections) - Anti-BTN3A2 antibody [OT11A6] (ab118051)

Paraffin-embedded Human lung tissue stained for BTN3A2 using ab118051 at 1/50 dilution in immunohistochemical analysis.



Immunohistochemistry (Formalin/PFA-fixed paraffin-embedded sections) - Anti-BTN3A2 antibody [OT11A6] (ab118051)

Paraffin-embedded Human endometrium tissue stained for BTN3A2 using ab118051 at 1/50 dilution in immunohistochemical analysis.



Immunocytochemistry/ Immunofluorescence - Anti-BTN3A2 antibody [OT11A6] (ab118051)

HT-29 (Human colorectal adenocarcinoma cell line) cells transiently transfected by pCMV6-ENTRY BTN3A2 stained for BTN3A2 (Green) using ab118051 at 1/100 dilution in ICC/IF.

**Please note:** All products are "FOR RESEARCH USE ONLY. NOT FOR USE IN DIAGNOSTIC PROCEDURES"

### **Our Abpromise to you: Quality guaranteed and expert technical support**

---

- Replacement or refund for products not performing as stated on the datasheet
- Valid for 12 months from date of delivery
- Response to your inquiry within 24 hours
  
- We provide support in Chinese, English, French, German, Japanese and Spanish
- Extensive multi-media technical resources to help you
- We investigate all quality concerns to ensure our products perform to the highest standards

If the product does not perform as described on this datasheet, we will offer a refund or replacement. For full details of the Abpromise, please visit <https://www.abcam.cn/abpromise> or contact our technical team.

### **Terms and conditions**

---

- Guarantee only valid for products bought direct from Abcam or one of our authorized distributors