

### Anti-BTN2A2/BTF2 antibody [6C7D2] ab233763

#### 5 图像

#### 概述

|       |   |
|-------|---|
| 产品名称  | Anti-BTN2A2/BTF2抗体[6C7D2]   |
| 描述    | 小鼠单克隆抗体[6C7D2] to BTN2A2/BTF2   |
| 宿主    | Mouse   |
| 经测试应用 | 适用于: WB, IHC-P, Flow Cyt  |
| 种属反应性 | 与反应: Human  |
| 免疫原   | Recombinant fragment corresponding to Human BTN2A2/BTF2 aa 57-237. (Expressed in E.coli).<br>Database link: <a href="#">Q8WVV5</a>  |
| 阳性对照  | WB: Recombinant human BTN2A2/BTF2 protein; BTN2A2/BTF2 (AA: extra 57-237)-hlgGfc transfected HEK-293 cell lysate. Flow: HeLa cells. IHC-P: Cervical cancer and bladder cancer tissue.   |
| 常规说明  | <p>The Life Science industry has been in the grips of a reproducibility crisis for a number of years. Abcam is leading the way in addressing this with our range of recombinant monoclonal antibodies and knockout edited cell lines for gold-standard validation. Please check that this product meets your needs before purchasing.</p> <p>If you have any questions, special requirements or concerns, please send us an inquiry and/or contact our Support team ahead of purchase. Recommended alternatives for this product can be found below, along with publications, customer reviews and Q&amp;As</p> |

#### 性能

|      |   |
|------|---|
| 形式   | Liquid  |
| 存放说明 | Shipped at 4°C. Store at +4°C short term (1-2 weeks). Upon delivery aliquot. Store at -20°C long term. Avoid freeze / thaw cycle. |
| 存储溶液 | Preservative: 0.05% Sodium azide<br>Constituent: PBS  |
| 纯度   | Protein G purified  |
| 克隆   | 单克隆   |
| 克隆编号 | 6C7D2   |
| 同种型  | IgG1  |

## 应用

### The Abpromise guarantee

**Abpromise™**承诺保证使用ab233763于以下的经测试应用

“应用说明”部分 下显示的仅为推荐的起始稀释度;实际最佳的稀释度/浓度应由使用者检定。

| 应用       | Ab评论 | 说明              |
|----------|------|-----------------|
| WB       |      | 1/500 - 1/2000. |
| IHC-P    |      | 1/200 - 1/1000. |
| Flow Cyt |      | 1/200 - 1/400.  |

## 靶标

### 组织特异性

Highly expressed in brain, bone marrow, small intestine, muscle, spleen and pancreas. Moderate expression was seen in lung, liver and kidney.

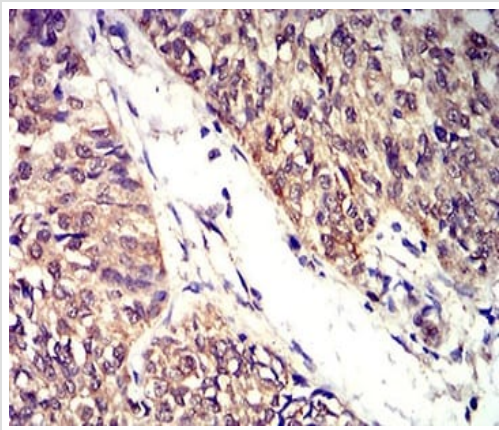
### 序列相似性

Belongs to the immunoglobulin superfamily. BTN/MOG family.  
Contains 1 B30.2/SPRY domain.  
Contains 1 Ig-like C2-type (immunoglobulin-like) domain.  
Contains 1 Ig-like V-type (immunoglobulin-like) domain.

### 细胞定位

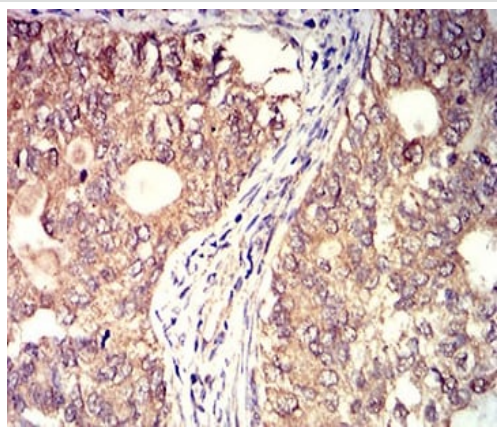
Membrane.

## 图片



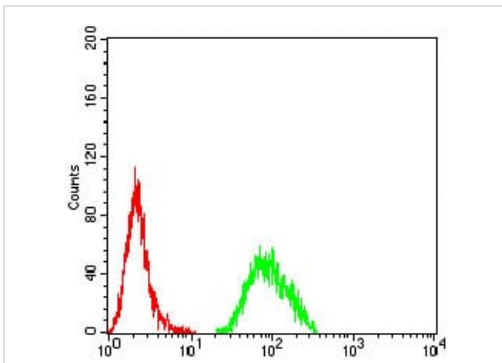
Paraffin-embedded human bladder cancer tissue stained for BTN2A2/BTF2 using ab233763 at 1/200 dilution in immunohistochemical analysis. DAB staining.

Immunohistochemistry (Formalin/PFA-fixed paraffin-embedded sections) - Anti-BTN2A2/BTF2 antibody [6C7D2] (ab233763)



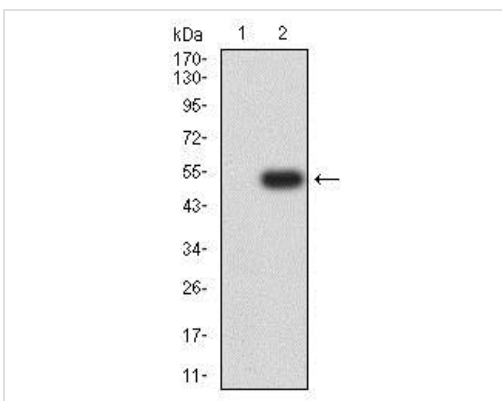
Immunohistochemistry (Formalin/PFA-fixed paraffin-embedded sections) - Anti-BTN2A2/BTF2 antibody [6C7D2] (ab233763)

Paraffin-embedded human cervical cancer tissue stained for BTN2A2/BTF2 using ab233763 at 1/200 dilution in immunohistochemical analysis. DAB staining.



Flow Cytometry - Anti-BTN2A2/BTF2 antibody [6C7D2] (ab233763)

Flow cytometric analysis of HeLa (human epithelial cell line from cervix adenocarcinoma) cells labelling BTN2A2/BTF2 using ab233763 at 1/200 dilution (green) compared to a negative control (red).



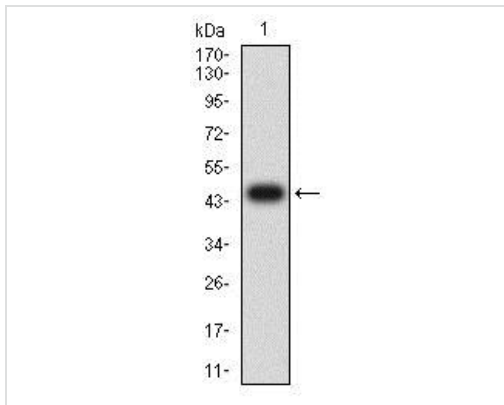
Western blot - Anti-BTN2A2/BTF2 antibody [6C7D2] (ab233763)

**All lanes** : Anti-BTN2A2/BTF2 antibody [6C7D2] (ab233763) at 1/500 dilution

**Lane 1** : HEK-293 (human epithelial cell line from embryonic kidney) cell lysate

**Lane 2** : BTN2A2/BTF2 (AA: extra 57-237)-hlgGFc transfected HEK-293 cell lysate

Developed using the ECL technique.



Anti-BTN2A2/BTF2 antibody [6C7D2] (ab233763) at 1/500 dilution  
+ Recombinant human GCSF receptor (AA: extra 25-187) protein

Expected MW is 46.4 kDa.

Western blot - Anti-BTN2A2/BTF2 antibody [6C7D2]  
(ab233763)

**Please note:** All products are "FOR RESEARCH USE ONLY. NOT FOR USE IN DIAGNOSTIC PROCEDURES"

### Our Abpromise to you: Quality guaranteed and expert technical support

---

- Replacement or refund for products not performing as stated on the datasheet
- Valid for 12 months from date of delivery
- Response to your inquiry within 24 hours
- We provide support in Chinese, English, French, German, Japanese and Spanish
- Extensive multi-media technical resources to help you
- We investigate all quality concerns to ensure our products perform to the highest standards

If the product does not perform as described on this datasheet, we will offer a refund or replacement. For full details of the Abpromise, please visit <https://www.abcam.cn/abpromise> or contact our technical team.

### Terms and conditions

---

- Guarantee only valid for products bought direct from Abcam or one of our authorized distributors