


Anti-BTK (phospho Y223) antibody ab101233

[1 References](#) [2 图像](#)

概述

产品名称	Anti-BTK (phospho Y223)抗体
描述	兔多克隆抗体to BTK (phospho Y223)
宿主	Rabbit
特异性	From Jan 2024, QC testing of replenishment batches of this polyclonal changed. All tested and expected application and reactive species combinations are still covered by our Abcam product promise. However, we no longer test all applications. For more information on a specific batch, please contact our Scientific Support who will be happy to help. You may also be interested in our alternative recombinant antibody, ab68217 .
经测试应用	适用于: WB, ELISA
种属反应性	与反应: Human 预测可用于: Mouse, Rat, Rabbit, Horse, Cow, Cat, Dog, Pig, Chimpanzee, Macaque monkey, Orangutan 
免疫原	Synthetic peptide corresponding to Human BTK aa 200-300 (phospho Y223) conjugated to keyhole limpet haemocyanin.
阳性对照	This antibody gave a positive signal in Serum starved HeLa whole cell lysate
常规说明	<p>The Life Science industry has been in the grips of a reproducibility crisis for a number of years. Abcam is leading the way in addressing this with our range of recombinant monoclonal antibodies and knockout edited cell lines for gold-standard validation. Please check that this product meets your needs before purchasing.</p> <p>If you have any questions, special requirements or concerns, please send us an inquiry and/or contact our Support team ahead of purchase. Recommended alternatives for this product can be found below, along with publications, customer reviews and Q&As</p>

性能

形式	Liquid
存放说明	Shipped at 4°C. Store at +4°C short term (1-2 weeks). Upon delivery aliquot. Store at -20°C or -80°C. Avoid freeze / thaw cycle.
存储溶液	pH: 7.40 Preservative: 0.02% Sodium azide Constituent: PBS

Batches of this product that have a concentration < 1mg/ml may have BSA added as a stabilising agent. If you would like information about the formulation of a specific lot, please contact our scientific support team who will be happy to help.

纯度 Immunogen affinity purified
克隆 多克隆
同种型 IgG

应用

The Abpromise guarantee **Abpromise™**承诺保证使用ab101233于以下的经测试应用

“应用说明”部分 下显示的仅为推荐的起始稀释度;实际最佳的稀释度/浓度应由使用者检定。

应用	Ab评论	说明
WB		Use a concentration of 1 µg/ml. Detects a band of approximately 74 kDa (predicted molecular weight: 76 kDa).
ELISA		Use a concentration of 1 µg/ml.

靶标

功能 Plays a crucial role in B-cell ontogeny. Transiently phosphorylates GTF2I on tyrosine residues in response to B-cell receptor cross-linking. Required for the formation of functional ARID3A DNA-binding complexes.

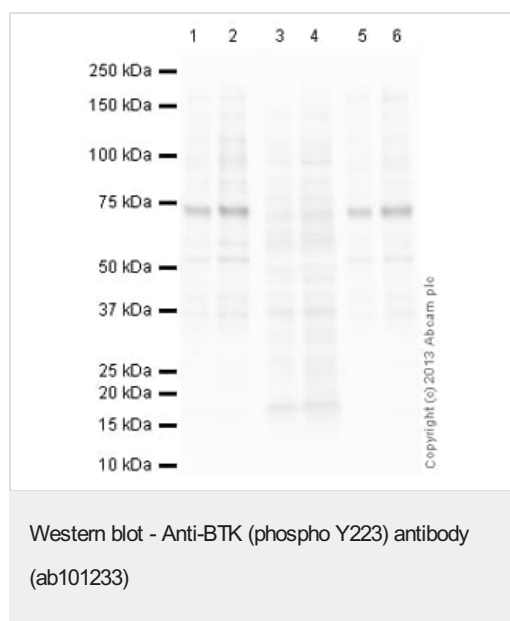
疾病相关 Defects in BTK are the cause of X-linked agammaglobulinemia (XLA) [MIM:300755]; also known as X-linked agammaglobulinemia type 1 (AGMX1) or immunodeficiency type 1 (IMD1). XLA is a humoral immunodeficiency disease which results in developmental defects in the maturation pathway of B-cells. Affected boys have normal levels of pre-B-cells in their bone marrow but virtually no circulating mature B-lymphocytes. This results in a lack of immunoglobulins of all classes and leads to recurrent bacterial infections like otitis, conjunctivitis, dermatitis, sinusitis in the first few years of life, or even some patients present overwhelming sepsis or meningitis, resulting in death in a few hours. Treatment in most cases is by infusion of intravenous immunoglobulin.

Defects in BTK may be the cause of X-linked hypogammaglobulinemia and isolated growth hormone deficiency (XLA-IGHD) [MIM:307200]; also known as agammaglobulinemia and isolated growth hormone deficiency or Fleisher syndrome or isolated growth hormone deficiency type 3 (IGHD3). In rare cases XLA is inherited together with isolated growth hormone deficiency (IGHD).

序列相似性 Belongs to the protein kinase superfamily. Tyr protein kinase family. TEC subfamily.
Contains 1 Btk-type zinc finger.
Contains 1 PH domain.
Contains 1 protein kinase domain.
Contains 1 SH2 domain.
Contains 1 SH3 domain.

翻译后修饰 Autophosphorylated on Tyr-223 and Tyr-551. Phosphorylation of Tyr-223 may create a docking site for a SH2 containing protein.

细胞定位 Cytoplasm. Membrane. Nucleus.



All lanes : Anti-BTK (phospho Y223) antibody (ab101233) at 1 $\mu\text{g/ml}$

Lane 1 : HeLa (Human epithelial carcinoma cell line) Serum starved Whole Cell Lysate at 10 μg

Lane 2 : HeLa (Human epithelial carcinoma cell line) Serum starved Whole Cell Lysate at 25 μg

Lane 3 : HeLa (Human epithelial carcinoma cell line) Serum starved Whole Cell Lysate at 10 μg with Immunising peptide at 1 $\mu\text{g/ml}$

Lane 4 : HeLa (Human epithelial carcinoma cell line) Serum starved Whole Cell Lysate at 25 μg with Immunising peptide at 1 $\mu\text{g/ml}$

Lane 5 : HeLa (Human epithelial carcinoma cell line) Serum starved Whole Cell Lysate at 10 μg with Non modified peptide at 1 $\mu\text{g/ml}$

Lane 6 : HeLa (Human epithelial carcinoma cell line) Serum starved Whole Cell Lysate at 25 μg with Non modified peptide at 1 $\mu\text{g/ml}$

Secondary

All lanes : Goat Anti-Rabbit IgG H&L (HRP) ([ab97051](#)) at 1/10000 dilution

Developed using the ECL technique.

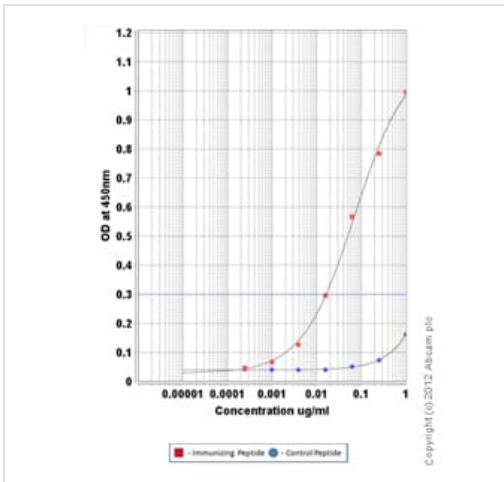
Performed under reducing conditions.

Predicted band size: 76 kDa

Observed band size: 75 kDa

Exposure time: 3 minutes

This blot was produced using a 10% Bis-tris gel under the MOPS buffer system. The gel was run at 200V for 50 minutes before being transferred onto a Nitrocellulose membrane at 30V for 70 minutes. The membrane was then blocked for an hour using 5% Bovine Serum Albumin before being incubated with ab101233 overnight at 4°C. Antibody binding was detected using an anti-rabbit antibody conjugated to HRP, and visualised using ECL development solution.



ELISA - Anti-BTK (phospho Y223) antibody
(ab101233)

ab101233 was tested using an Indirect ELISA approach. The wells were coated with peptide (1 µg/ml at 100 µl/well) overnight at 4°C, followed by a 5% BSA blocking step for 1 hour at room temperature. The primary Ab was then added at a dilution range of 1- 0.00025 µg/ml (100 µl/well) for 1 hr at room temperature. A HRP-conjugated anti-rabbit IgG (heavy and light chain) was used as a secondary antibody at 1:20,000 dilution for 1 hr at room temperature.

Please note: All products are "FOR RESEARCH USE ONLY. NOT FOR USE IN DIAGNOSTIC PROCEDURES"

Our Abpromise to you: Quality guaranteed and expert technical support

- Replacement or refund for products not performing as stated on the datasheet
- Valid for 12 months from date of delivery
- Response to your inquiry within 24 hours
- We provide support in Chinese, English, French, German, Japanese and Spanish
- Extensive multi-media technical resources to help you
- We investigate all quality concerns to ensure our products perform to the highest standards

If the product does not perform as described on this datasheet, we will offer a refund or replacement. For full details of the Abpromise, please visit <https://www.abcam.cn/abpromise> or contact our technical team.

Terms and conditions

- Guarantee only valid for products bought direct from Abcam or one of our authorized distributors