

### Anti-BrdU antibody [IIB5] ab8955

★★★★★ [3 Abreviews](#) [27 References](#) [5 图像](#)

#### 概述

产品名称	Anti-BrdU抗体[IIB5]
描述	小鼠单克隆抗体[IIB5] to BrdU
宿主	Mouse
特异性	This antibody also reacts with bromodeoxyuridine when incorporated into nuclear DNA. It cross reacts with iododeoxyuridine (IdU).
经测试应用	<b>适用于:</b> ICC/IF, Flow Cyt, IHC-Fr, IHC-P
种属反应性	<b>与反应:</b> Species independent
免疫原	Chemical/ Small Molecule corresponding to BrdU conjugated to bovine serum albumin.
常规说明	<p>The Life Science industry has been in the grips of a reproducibility crisis for a number of years. Abcam is leading the way in addressing this with our range of recombinant monoclonal antibodies and knockout edited cell lines for gold-standard validation. Please check that this product meets your needs before purchasing.</p> <p>If you have any questions, special requirements or concerns, please send us an inquiry and/or contact our Support team ahead of purchase. Recommended alternatives for this product can be found below, along with publications, customer reviews and Q&amp;As</p>

#### 性能

形式	Liquid
存放说明	Shipped at 4°C. Store at +4°C short term (1-2 weeks). Upon delivery aliquot. Store at -20°C or -80°C. Avoid freeze / thaw cycle.
存储溶液	Preservative: 0.09% Sodium azide Constituent: PBS
纯度	Protein G purified
克隆	单克隆
克隆编号	IIB5
骨髓瘤	Sp2/0-Ag14
同种型	IgG1

## The Abpromise guarantee **Abpromise™**承诺保证使用ab8955于以下的经测试应用

“应用说明”部分 下显示的仅为推荐的起始稀释度;实际最佳的稀释度/浓度应由使用者检定。

应用	Ab评论	说明
ICC/IF		Use at an assay dependent concentration. Using immunocytochemistry, a combination of this antibody and Mouse monoclonal to Mitotic Cells ( <b>ab8956</b> ) can distinguish and quantitate the four major fractions of the cell cycle.
Flow Cyt		Use at an assay dependent concentration. <b>ab170190</b> - Mouse monoclonal IgG1, is suitable for use as an isotype control with this antibody.
IHC-Fr		1/100 - 1/200. ABC method.
IHC-P	★★★★★ (1)	1/100 - 1/200. ABC method.

## 靶标

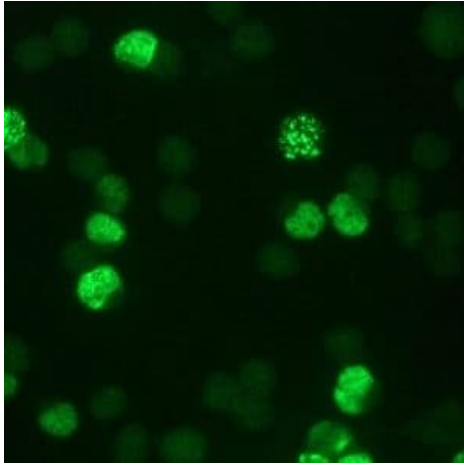
### 相关性

The immunocytochemical detection of bromodeoxyuridine (BrdU) incorporated into DNA is a powerful tool to study the cytokinetics of normal and neoplastic cells. In vitro or in vivo labeling of tumor cells with the thymidine analogue BrdU and the subsequent detection of incorporated BrdU with specific anti-BrdU monoclonal antibodies is an accurate and comprehensive method to quantitate the degree of DNA-synthesis. BrdU is incorporated into the newly synthesized DNA of S-phase cells may provide an estimate for the fraction of cells in S-phase. Also dynamic proliferative information such as the S-phase transit rate and the potential doubling time can be obtained, by means of bivariate BrdU/DNA flow cytometric analysis.

### 细胞定位

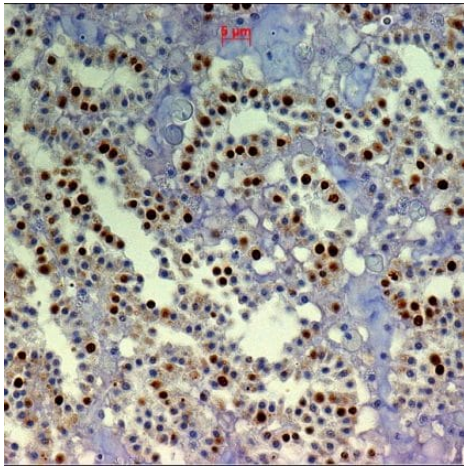
Nuclear

## 图片



Immunocytochemistry/ Immunofluorescence - Anti-BrdU antibody [IIB5] (ab8955)

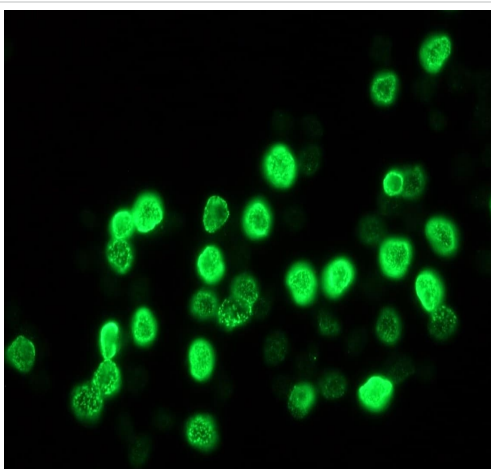
Indirect immunofluorescence staining of BrdU-labeled MR65 lung cancer cells with ab8955.



Immunohistochemistry (Formalin/PFA-fixed paraffin-embedded sections) - Anti-BrdU antibody [IIB5] (ab8955)

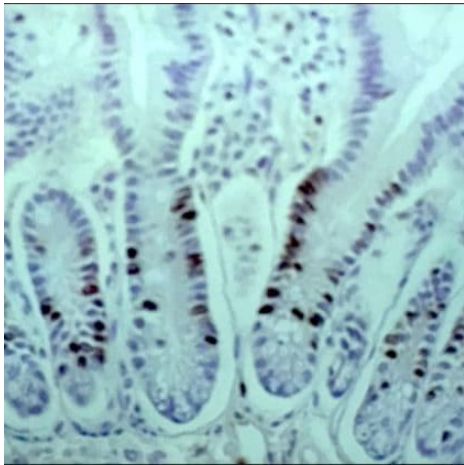
BrdU staining in sponge *Halisarca caerulea* using ab8955.

Metacrylate embedded tissue sections were incubated with 1:200 diluted primary antibody. An avidin-biotin complex kit using biotinylated rabbit anti-mouse antibody and then incubation in avidin-biotin-peroxidase complex was used for detection.



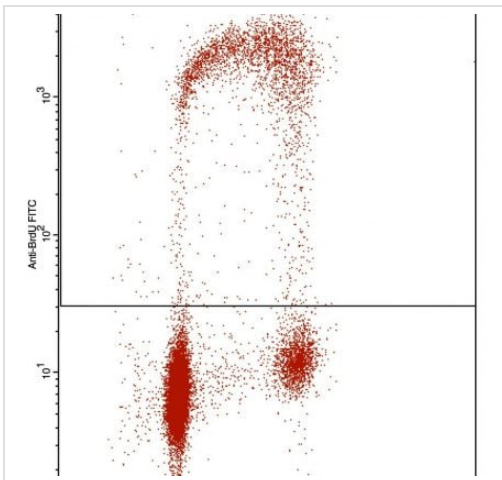
Immunocytochemistry/ Immunofluorescence - Anti-BrdU antibody [IIB5] (ab8955)

Indirect immunofluorescence staining of BrdU-labeled MR65 lung cancer cells using ab8955 (1:1000).



Immunohistochemistry (Formalin/PFA-fixed paraffin-embedded sections) - Anti-BrdU antibody [IIB5] (ab8955)

BrdU staining in paraffin embedded rat intestine using ab8955. Primary antibody diluted 1:200. Peroxidase-conjugated goat anti mouse secondary antibody was used for detection.



Flow Cytometry - Anti-BrdU antibody [IIB5] (ab8955)

Flow cytometric BrdU-DNA cell cycle analysis in a lung cancer cell line. Dilution 1:100 of primary antibody ab8955. FITC-conjugated goat anti mouse secondary antibody was used for detection.

**Please note:** All products are "FOR RESEARCH USE ONLY. NOT FOR USE IN DIAGNOSTIC PROCEDURES"

### Our Abpromise to you: Quality guaranteed and expert technical support

- Replacement or refund for products not performing as stated on the datasheet
- Valid for 12 months from date of delivery
- Response to your inquiry within 24 hours
- We provide support in Chinese, English, French, German, Japanese and Spanish
- Extensive multi-media technical resources to help you
- We investigate all quality concerns to ensure our products perform to the highest standards

If the product does not perform as described on this datasheet, we will offer a refund or replacement. For full details of the Abpromise, please visit <https://www.abcam.cn/abpromise> or contact our technical team.

## Terms and conditions

---

- Guarantee only valid for products bought direct from Abcam or one of our authorized distributors