

# Anti-BRAT1 antibody ab84362

## 2 图像

### 概述

<b>产品名称</b>	Anti-BRAT1抗体
<b>描述</b>	兔多克隆抗体to BRAT1
<b>宿主</b>	Rabbit
<b>经测试应用</b>	<b>适用于:</b> IHC-P
<b>种属反应性</b>	<b>与反应:</b> Human <b>预测可用于:</b> Chimpanzee, Rhesus monkey, Gorilla, Orangutan 
<b>免疫原</b>	Synthetic peptide corresponding to Human BRAT1 aa 775-821 (C terminal). Database link: <a href="#">NP_689956.1</a>
<b>阳性对照</b>	Human metastatic lymph node; Human lung non small cell cancer
<b>常规说明</b>	<p>The Life Science industry has been in the grips of a reproducibility crisis for a number of years. Abcam is leading the way in addressing this with our range of recombinant monoclonal antibodies and knockout edited cell lines for gold-standard validation. Please check that this product meets your needs before purchasing.</p> <p>If you have any questions, special requirements or concerns, please send us an inquiry and/or contact our Support team ahead of purchase. Recommended alternatives for this product can be found below, along with publications, customer reviews and Q&amp;As</p>

### 性能

<b>形式</b>	Liquid
<b>存放说明</b>	Shipped at 4°C. Upon delivery aliquot and store at -20°C. Avoid freeze / thaw cycles.
<b>存储溶液</b>	pH: 6.8 Preservative: 0.09% Sodium azide Constituents: 0.1% BSA, Tris buffered saline
<b>纯度</b>	Immunogen affinity purified
<b>纯化说明</b>	Purified using an epitope specific to BRAT1 immobilized on solid support.
<b>克隆</b>	多克隆
<b>同种型</b>	IgG

**The Abpromise guarantee**      **Abpromise™**承诺保证使用ab84362于以下的经测试应用

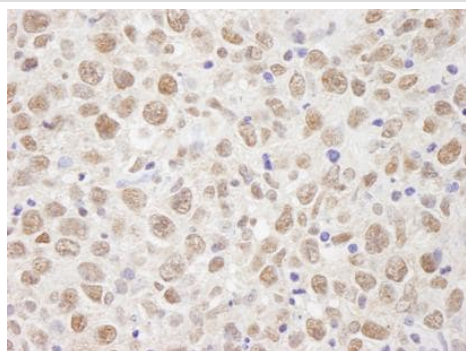
“应用说明”部分 下显示的仅为推荐的起始稀释度;实际最佳的稀释度/浓度应由使用者检定。

应用	Ab评论	说明
IHC-P		1/100 - 1/500. Epitope exposure is recommended. Epitope exposure with citrate buffer will enhance staining.

**靶标**

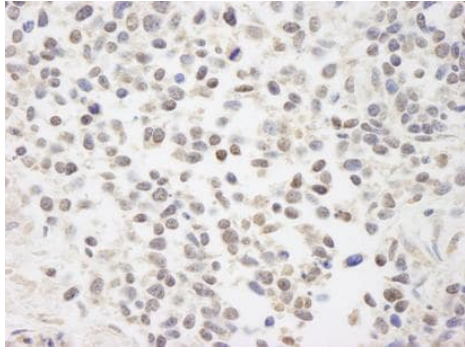
<b>功能</b>	Required for activation of ATM following ionizing radiation. May act by regulating dephosphorylation of ATM.
<b>组织特异性</b>	Ubiquitously expressed.
<b>序列相似性</b>	Contains 2 HEAT repeats.
<b>细胞定位</b>	Nucleus. Present at double strand breaks (DSBs) following ionizing radiation treatment.

**图片**



Detection of Human BRAT1 in formalin-fixed paraffin-embedded section of Human metastatic lymph node by Immunohistochemistry using ab84362 at a dilution of 1/250. Detection was performed by DAB staining using anti-Rabbit IHC antibody at a dilution of 1/100.

Immunohistochemistry (Formalin/PFA-fixed paraffin-embedded sections) - Anti-BRAT1 antibody (ab84362)



Immunohistochemistry (Formalin/PFA-fixed paraffin-embedded sections) - Anti-BRAT1 antibody (ab84362)

Detection of Human BRAT1 in formalin-fixed paraffin-embedded section of Human lung non-small cell cancer by Immunohistochemistry using ab84362 at a dilution of 1/250. Detection was performed by DAB staining using anti-Rabbit IHC antibody at a dilution of 1/100.

**Please note:** All products are "FOR RESEARCH USE ONLY. NOT FOR USE IN DIAGNOSTIC PROCEDURES"

### Our Abpromise to you: Quality guaranteed and expert technical support

---

- Replacement or refund for products not performing as stated on the datasheet
- Valid for 12 months from date of delivery
- Response to your inquiry within 24 hours
- We provide support in Chinese, English, French, German, Japanese and Spanish
- Extensive multi-media technical resources to help you
- We investigate all quality concerns to ensure our products perform to the highest standards

If the product does not perform as described on this datasheet, we will offer a refund or replacement. For full details of the Abpromise, please visit <https://www.abcam.cn/abpromise> or contact our technical team.

### Terms and conditions

---

- Guarantee only valid for products bought direct from Abcam or one of our authorized distributors