

# Anti-Bovine Serum Albumin antibody [5F9] ab9092

**4 References**   [1 图像](#)

### 概述

产品名称	Anti-Bovine Serum Albumin抗体[5F9]
描述	小鼠单克隆抗体[5F9] to Bovine Serum Albumin
宿主	Mouse
特异性	This antibody recognizes a 66 kDa band corresponding to bovine serum albumin monomer. No cross reactivity is detected against other serum proteins by immunoblot. No reactivity is detected by ELISA against human serum albumin or ovalbumin.
经测试应用	适用于: WB
种属反应性	与反应: Cow 不与反应: Chicken, Human
免疫原	Full length native protein (purified) corresponding to Bovine Bovine Serum Albumin.
常规说明	<p>The Life Science industry has been in the grips of a reproducibility crisis for a number of years. Abcam is leading the way in addressing this with our range of recombinant monoclonal antibodies and knockout edited cell lines for gold-standard validation. Please check that this product meets your needs before purchasing.</p> <p>If you have any questions, special requirements or concerns, please send us an inquiry and/or contact our Support team ahead of purchase. Recommended alternatives for this product can be found below, along with publications, customer reviews and Q&amp;As</p>

### 性能

形式	Liquid
存放说明	Shipped at 4°C. Upon delivery aliquot and store at -20°C or -80°C. Avoid repeated freeze / thaw cycles.
存储溶液	Preservative: 0.01% Sodium azide Constituents: 0.42% Potassium phosphate, 0.87% Sodium chloride
纯度	Protein A purified
克隆	单克隆
克隆编号	5F9
骨髓瘤	Sp2/0
同种型	IgG1

轻链类型 unknown

应用

The Abpromise guarantee **Abpromise™**承诺保证使用ab9092于以下的经测试应用

“应用说明”部分 下显示的仅为推荐的起始稀释度;实际最佳的稀释度/浓度应由使用者检定。

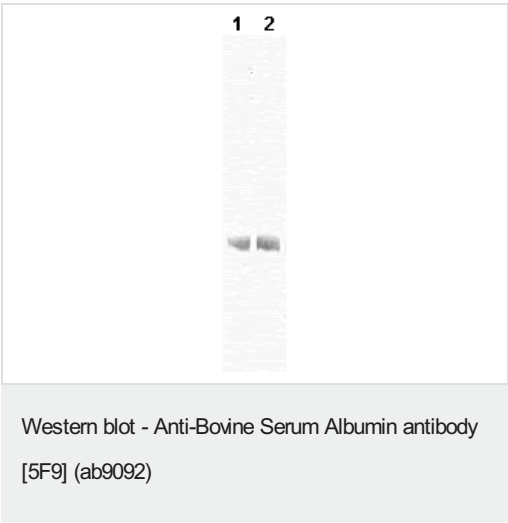
应用	Ab评论	说明
WB		

应用说明

This product was assayed by immunoblot using IRDye800™ Goat-anti-Mouse IgG.  
A working dilution of 1:5,000 is suggested for this assay.  
Researchers should determine optimal titers for other applications.  
The antibody may be suitable for other applications, although no supporting data is available  
ELISA: Use at an assay dependent dilution.

靶标

图片



Anti-Bovine Serum Albumin is shown to detect BSA in bovine serum diluted 1:100 (lane 1) and in purified BSA preparations at 0.5 mg/ml (lane 2). In both lanes 20 ul of sample was applied. Primary antibody is diluted 1:5000 in PBS and is reacted for 1.5 h at room temperature.

Detection occurs using a 1:5000 dilution of IRDye800™ Conjugated Goat-a-Mouse IgG reacted for 1 h at room temperature. Visualization is by near-infrared (IR) western blotting analysis using the Odyssey® Infrared Imaging System developed by LI-COR. Other detection systems will yield similar results. IRDye is a trademark of LI-COR Biosciences, Lincoln, NE.

Anti-Bovine Serum Albumin is shown to detect BSA in bovine serum diluted 1:100 (lane 1) and in purified BSA preparations at 0.5 mg/ml (lane 2). In both lanes 20 ul of sample was applied. Primary antibody is diluted 1:5000 in PBS and is reacted for 1.5 h at room temperature.

Detection occurs using a 1:5000 dilution of IRDye800

Please note: All products are "FOR RESEARCH USE ONLY. NOT FOR USE IN DIAGNOSTIC PROCEDURES"

### **Our Abpromise to you: Quality guaranteed and expert technical support**

---

- Replacement or refund for products not performing as stated on the datasheet
- Valid for 12 months from date of delivery
- Response to your inquiry within 24 hours
  
- We provide support in Chinese, English, French, German, Japanese and Spanish
- Extensive multi-media technical resources to help you
- We investigate all quality concerns to ensure our products perform to the highest standards

If the product does not perform as described on this datasheet, we will offer a refund or replacement. For full details of the Abpromise, please visit <https://www.abcam.cn/abpromise> or contact our technical team.

### **Terms and conditions**

---

- Guarantee only valid for products bought direct from Abcam or one of our authorized distributors