

Anti-Borealin/CDCA8 antibody ab74473

★★★★★ [1 Abreviews](#) [1 References](#) [2 图像](#)

概述

产品名称	Anti-Borealin/CDCA8抗体
描述	兔多克隆抗体to Borealin/CDCA8
宿主	Rabbit
经测试应用	适用于: WB, ICC/IF
种属反应性	与反应: Rat
免疫原	Synthetic peptide. This information is proprietary to Abcam and/or its suppliers.
阳性对照	Rat kidney tissue lysate
常规说明	<p>The Life Science industry has been in the grips of a reproducibility crisis for a number of years. Abcam is leading the way in addressing this with our range of recombinant monoclonal antibodies and knockout edited cell lines for gold-standard validation. Please check that this product meets your needs before purchasing.</p> <p>If you have any questions, special requirements or concerns, please send us an inquiry and/or contact our Support team ahead of purchase. Recommended alternatives for this product can be found below, along with publications, customer reviews and Q&As</p>

性能

形式	Liquid
存放说明	Shipped at 4°C. Store at +4°C.
存储溶液	<p>pH: 7.2</p> <p>Preservative: 0.02% Sodium azide</p> <p>Constituent: PBS</p>
纯度	Immunogen affinity purified
克隆	多克隆
同种型	IgG

应用

The Abpromise guarantee **Abpromise™**承诺保证使用ab74473于以下的经测试应用

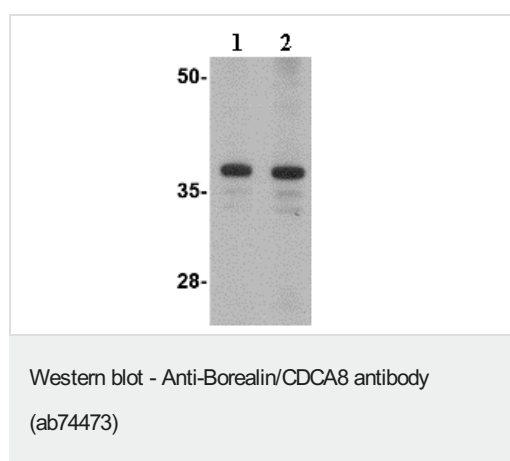
“应用说明”部分 下显示的仅为推荐的起始稀释度;实际最佳的稀释度/浓度应由使用者检定。

应用	Ab评论	说明
WB	★★★★★ (1)	Use a concentration of 1 µg/ml. Detects a band of approximately 38 kDa (predicted molecular weight: 31 kDa).
ICC/IF		Use at an assay dependent concentration.

靶标

功能	Component of the chromosomal passenger complex (CPC), a complex that acts as a key regulator of mitosis. The CPC complex has essential functions at the centromere in ensuring correct chromosome alignment and segregation and is required for chromatin-induced microtubule stabilization and spindle assembly. In the complex, it may be required to direct the CPC to centromeric DNA. Major effector of the TTK kinase in the control of attachment-error-correction and chromosome alignment.
序列相似性	Belongs to the borealin family.
发展阶段	Cell-cycle regulated. Increases during G2/M phase and then reduces after exit from M phase.
结构域	The C-terminal region (aa 207-280) represents the dimerization motif.
翻译后修饰	Phosphorylated by TTK, essentially at Thr-88, Thr94, Thr-169 and Thr-230. Sumoylated by UBE2I and RANBP2. Desumoylated by SENP3 through the removal of SUMO2 and SUMO3.
细胞定位	Nucleus > nucleolus. Cytoplasm. Cytoplasm > cytoskeleton > spindle. Chromosome > centromere. Localizes on chromosome arms and inner centromeres from prophase through metaphase and then transferring to the spindle midzone and midbody from anaphase through cytokinesis. Colocalizes with SENP3 in the nucleolus in interphase cells.

图片



Lane 1 : Anti-Borealin/CDCA8 antibody (ab74473) at 1 µg/ml

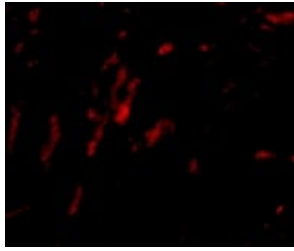
Lane 2 : Anti-Borealin/CDCA8 antibody (ab74473) at 2 µg/ml

All lanes : Rat kidney lysate

Lysates/proteins at 15 µg per lane.

Predicted band size: 31 kDa

Observed band size: 38 kDa



Immunofluorescence of CDCA8 in Rat Kidney cells using ab74473 at 20 ug/ml.

Immunocytochemistry/ Immunofluorescence - Anti-Borealine/CDCA8 antibody (ab74473)

Please note: All products are "FOR RESEARCH USE ONLY. NOT FOR USE IN DIAGNOSTIC PROCEDURES"

Our Abpromise to you: Quality guaranteed and expert technical support

- Replacement or refund for products not performing as stated on the datasheet
- Valid for 12 months from date of delivery
- Response to your inquiry within 24 hours
- We provide support in Chinese, English, French, German, Japanese and Spanish
- Extensive multi-media technical resources to help you
- We investigate all quality concerns to ensure our products perform to the highest standards

If the product does not perform as described on this datasheet, we will offer a refund or replacement. For full details of the Abpromise, please visit <https://www.abcam.cn/abpromise> or contact our technical team.

Terms and conditions

- Guarantee only valid for products bought direct from Abcam or one of our authorized distributors