

Anti-BOB1 antibody [EP3300] ab76010

重组 RabMAb

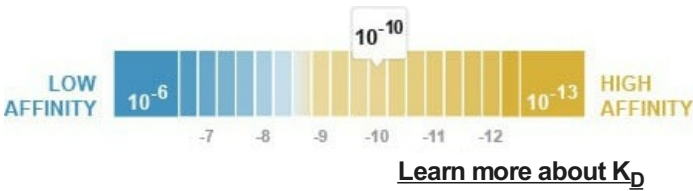
5 图像

概述

产品名称	Anti-BOB1抗体[EP3300]
描述	兔单克隆抗体[EP3300] to BOB1
宿主	Rabbit
经测试应用	适用于: Flow Cyt (Intra), WB, IHC-P 不适用于: ICC/IF or IP
种属反应性	与反应: Human
免疫原	Synthetic peptide within Human BOB1 aa 200-300. The exact sequence is proprietary.
阳性对照	Ramos cell lysate. Human tonsil tissue.
常规说明	<p>This product is a recombinant monoclonal antibody, which offers several advantages including:</p> <ul style="list-style-type: none">- High batch-to-batch consistency and reproducibility- Improved sensitivity and specificity- Long-term security of supply- Animal-free production <p>For more information see here.</p> <p>Our RabMAb[®] technology is a patented hybridoma-based technology for making rabbit monoclonal antibodies. For details on our patents, please refer to RabMAb[®] patents.</p> <p>Mouse, Rat: We have preliminary internal testing data to indicate this antibody may not react with these species. Please contact us for more information.</p>

性能

形式	Liquid
存放说明	Shipped at 4°C. Upon delivery aliquot and store at -20°C. Avoid freeze / thaw cycles.
解离常数 (K _D)	K _D = 1.14 x 10 ⁻¹⁰ M



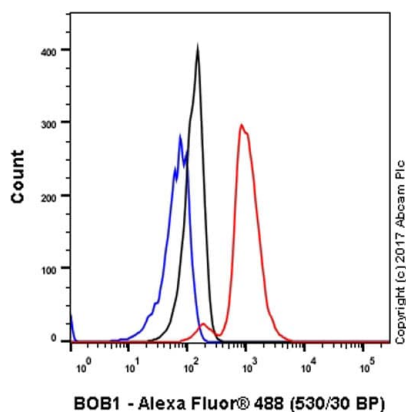
存储溶液	pH: 7.20 Preservative: 0.05% Sodium azide Constituents: 0.1% BSA, 40% Glycerol (glycerin, glycerine), 9.85% Tris glycine, 50% Tissue culture supernatant
纯度	Protein A purified
克隆	单克隆
克隆编号	EP3300
同种型	IgG

The Abpromise guarantee **Abpromise™承诺保证使用ab76010于以下的经测试应用**

应用	Ab评论	说明
Flow Cyt (Intra)		Use at an assay dependent concentration.
WB		1/5000 - 1/30000. Predicted molecular weight: 28 kDa.
IHC-P		1/100 - 1/250. Perform heat mediated antigen retrieval before commencing with IHC staining protocol.

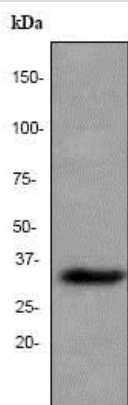
靶标

功能	Transcriptional coactivator that specifically associates with either OCT1 or OCT2. It boosts the OCT1 mediated promoter activity and to a lesser extent, that of OCT2. It has no intrinsic DNA-binding activity. It recognizes the POU domains of OCT1 and OCT2. It is essential for the response of B-cells to antigens and required for the formation of germinal centers.
组织特异性	B-cell specific.
疾病相关	Note=A chromosomal aberration involving POU2AF1/OBF1 may be a cause of a form of B-cell leukemia. Translocation t(3;11)(q27;q23) with BCL6.
序列相似性	Belongs to the POU2AF1 family.
翻译后修饰	Ubiquitinated; mediated by SIAH1 or SIAH2 and leading to its subsequent proteasomal degradation.
细胞定位	Nucleus.



Flow Cytometry (Intracellular) - Anti-BOB1 antibody [EP3300] (ab76010)

Intracellular Flow Cytometry analysis of Jurkat (human acute T cell leukemia) cells labeling BOB1 with unpurified ab76010 at 1/40 dilution (10ug/ml) (red). Cells were fixed with 4% paraformaldehyde and permeabilised with 90% methanol. A Goat anti rabbit IgG (Alexa Fluor® 488) (1/2000 dilution) was used as the secondary antibody. Rabbit monoclonal IgG (Black) was used as the isotype control, cells without incubation with primary antibody and secondary antibody (Blue) were used as the unlabeled control.



Western blot - Anti-BOB1 antibody [EP3300] (ab76010)

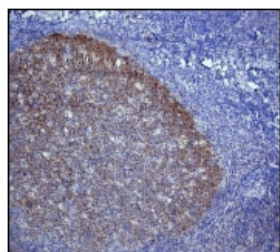
Anti-BOB1 antibody [EP3300] (ab76010) at 1/30000 dilution + Ramos cell lysate at 10 µg

Secondary

Goat anti-rabbit HRP at 1/1000 dilution

Predicted band size: 28 kDa

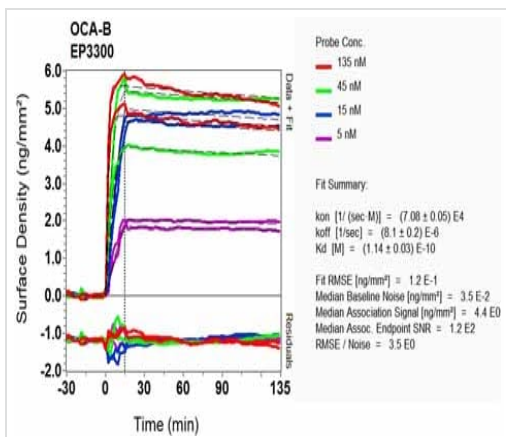
Observed band size: 35 kDa



Immunohistochemistry (Formalin/PFA-fixed paraffin-embedded sections) - Anti-BOB1 antibody [EP3300] (ab76010)

ab76010, at 1/100 dilution, staining BOB1 in human tonsil by immunohistochemistry using paraffin-embedded tissue.

Perform heat mediated antigen retrieval before commencing with IHC staining protocol.



OI-RD Scanning - Anti-BOB1 antibody [EP3300]
(ab76010)

Equilibrium disassociation constant (K_D)

Learn more about K_D

[Click here to learn more about \$K_D\$](#)

Why choose a
recombinant antibody?



**Research with
confidence**
Consistent and
reproducible results



**Long-term and
scalable supply**
Recombinant
technology



**Success from the
first experiment**
Confirmed
specificity



**Ethical standards
compliant**
Animal-free
production

Anti-BOB1 antibody [EP3300] (ab76010)

Please note: All products are "FOR RESEARCH USE ONLY. NOT FOR USE IN DIAGNOSTIC PROCEDURES"

Our Abpromise to you: Quality guaranteed and expert technical support

- Replacement or refund for products not performing as stated on the datasheet
- Valid for 12 months from date of delivery
- Response to your inquiry within 24 hours
- We provide support in Chinese, English, French, German, Japanese and Spanish
- Extensive multi-media technical resources to help you
- We investigate all quality concerns to ensure our products perform to the highest standards

If the product does not perform as described on this datasheet, we will offer a refund or replacement. For full details of the Abpromise, please visit <https://www.abcam.cn/abpromise> or contact our technical team.

Terms and conditions

- Guarantee only valid for products bought direct from Abcam or one of our authorized distributors