




### Anti-BNIP3L/NIX antibody ab8399

★★★★★ **3 Abreviews** **28 References** **3 图像**

#### 概述

产品名称	Anti-BNIP3L/NIX抗体
描述	兔多克隆抗体to BNIP3L/NIX
宿主	Rabbit
经测试应用	适用于: WB, ICC/IF, IHC-P
种属反应性	与反应: Human 预测可用于: Mouse, Rat 
免疫原	Synthetic peptide corresponding to Human BNIP3L/NIX aa 77-92. Sequence: DAQHESGQSSSRGSSH  Database link: <b>O60238</b> (Peptide available as <b>ab8431</b> )   <b>Run BLAST with</b>  <b>Run BLAST with</b>
阳性对照	K562 cell lysate can be used as positive control and the approximate 40kDa top band represents monomer of Bnip3L/NIX (4).
常规说明	<p>Members in the Bcl-2 family are critical regulators of apoptosis by either inhibiting or promoting cell death. Bcl-2 homology 3 (BH3) domain is a potent death domain. BH3 domain containing pro-apoptotic proteins, including Bad, Bax, Bid, Bik, Hrk, Nip3, and Bim, form a growing subclass of the Bcl-2 family. A novel BH3 domain containing protein was recently identified and designated Bnip3L/NIX, Bnip3a, and Nix (for Nip3-like protein X) (Matsushima, M. et al.; Yasuda, M. et al.; Chen, G, et al.). Bnip3L/Bnip3a/Nix is a homolog of the E1B 19K/Bcl-2 binding and pro-apoptotic protein Bnip3. Over expression of Bnip3L/NIX induces apoptosis (Yasuda, M. et al.; Chen, G, et al.). Bnip3L/NIX interacts with and overcomes suppresses by Bcl-2 and Bcl-xL. Bnip3L/NIX is localized in mitochondria. The messenger RNA of Bnip3L/NIX is ubiquitously expressed in human tissues (Matsushima, M. et al.; Yasuda, M. et al.). Bnip3L/NIX and Bnip3 form a new subfamily of the pro-apoptotic mitochondrial proteins.</p> <p>The Life Science industry has been in the grips of a reproducibility crisis for a number of years. Abcam is leading the way in addressing this with our range of recombinant monoclonal antibodies and knockout edited cell lines for gold-standard validation. Please check that this product meets your needs before purchasing.</p> <p>If you have any questions, special requirements or concerns, please send us an inquiry and/or contact our Support team ahead of purchase. Recommended alternatives for this product can be found below, along with publications, customer reviews and Q&amp;As</p>

<b>性能</b>	
<b>形式</b>	Liquid
<b>存放说明</b>	Shipped at 4°C. Store at +4°C.
<b>存储溶液</b>	pH: 7.2 Preservative: 0.02% Sodium azide
<b>纯度</b>	Affinity purified
<b>Primary antibody说明</b>	Members in the Bcl-2 family are critical regulators of apoptosis by either inhibiting or promoting cell death. Bcl-2 homology 3 (BH3) domain is a potent death domain. BH3 domain containing pro-apoptotic proteins, including Bad, Bax, Bid, Bik, Hrk, Nip3, and Bim, form a growing subclass of the Bcl-2 family. A novel BH3 domain containing protein was recently identified and designated Bnip3L, Bnip3a, and Nix (for Nip3-like protein X) (Matsushima, M. et al.; Yasuda, M. et al.; Chen, G, et al.). Bnip3L/Bnip3a/Nix is a homolog of the E1B 19K/Bcl-2 binding and pro-apoptotic protein Bnip3. Over expression of Bnip3L induces apoptosis (Yasuda, M. et al.; Chen, G, et al.). Bnip3L interacts with and overcomes suppression by Bcl-2 and Bcl-xL. Bnip3L is localized in mitochondria. The messenger RNA of Bnip3L is ubiquitously expressed in human tissues (Matsushima, M. et al.; Yasuda, M. et al.). Bnip3L and Bnip3 form a new subfamily of the pro-apoptotic mitochondrial proteins.
<b>克隆</b>	多克隆
<b>同种型</b>	IgG
<b>轻链类型</b>	unknown

**应用**

**The Abpromise guarantee**      **Abpromise™** 承诺保证使用 ab8399 于以下的经测试应用

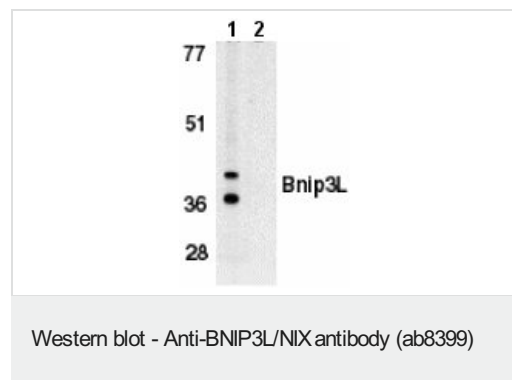
“应用说明”部分 下显示的仅为推荐的起始稀释度; 实际最佳的稀释度/浓度应由使用者检定。

应用	Ab 评论	说明
<b>WB</b>		Use a concentration of 0.5 - 1 µg/ml. Detects a band of approximately 40 kDa. To reduce possible background load less sample and or use more diluted antibody.
<b>ICC/IF</b>	★★★★★ (1)	Use at an assay dependent concentration. See Abreview.
<b>IHC-P</b>		Use a concentration of 2 µg/ml.

**靶标**

<b>功能</b>	Induces apoptosis. Interacts with viral and cellular anti-apoptosis proteins. Can overcome the suppressors BCL-2 and BCL-XL, although high levels of BCL-XL expression will inhibit apoptosis. May function as a tumor suppressor. Inhibits apoptosis induced by BNIP3.
<b>序列相似性</b>	Belongs to the NIP3 family.
<b>翻译后修饰</b>	Undergoes progressive proteolysis to an 11 kDa C-terminal fragment, which is blocked by the proteasome inhibitor lactacystin.

## 图片

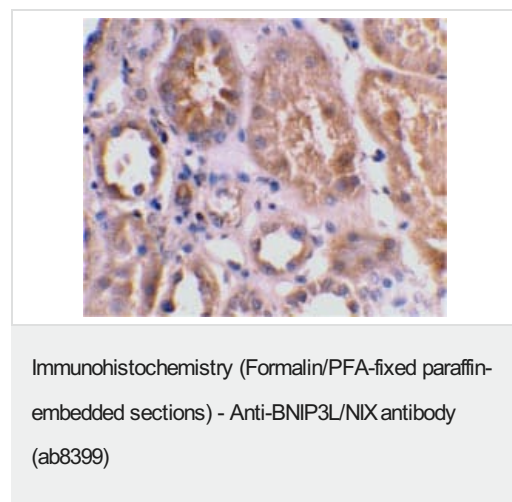


**All lanes :** Anti-BNIP3L/NIX antibody (ab8399) at 1 µg/ml

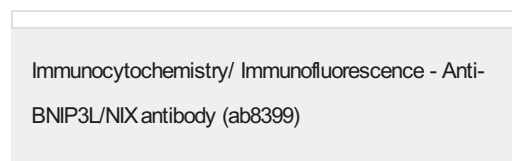
**Lane 1 :** K562 whole cell lysate with absence of immunogenic peptide

**Lane 2 :** K562 whole cell lysate with presence of immunogenic peptide

The approximate 40 kDa top band represents monomer of Bnip3L/NIX.



ab8399 at 2µg/ml staining BNIP3L/NIX in human kidney tissue by IHC



Immunofluorescence of Bnip3L/NIX in Human Kidney cells using ab8399 at 10 ug/ml.

**Please note:** All products are "FOR RESEARCH USE ONLY. NOT FOR USE IN DIAGNOSTIC PROCEDURES"

### Our Abpromise to you: Quality guaranteed and expert technical support

- Replacement or refund for products not performing as stated on the datasheet
- Valid for 12 months from date of delivery
- Response to your inquiry within 24 hours
- We provide support in Chinese, English, French, German, Japanese and Spanish
- Extensive multi-media technical resources to help you
- We investigate all quality concerns to ensure our products perform to the highest standards

If the product does not perform as described on this datasheet, we will offer a refund or replacement. For full details of the Abpromise, please visit <https://www.abcam.cn/abpromise> or contact our technical team.

#### **Terms and conditions**

---

- Guarantee only valid for products bought direct from Abcam or one of our authorized distributors